



A stunning two bedroom apartment which is presented in immaculate condition throughout. Residents will also benefit from a range of facilities, to include a 24 hour concierge and gymnasium.

Pilot Walk, Greenwich, London, SE10

£615,000 Leasehold (233 years remaining)

savills

- Stunning two bedroom apartment
- Immaculate throughout
- Impressive views
- Highly sought after development
- Impressive facilities
- Chain free

Description

Positioned upon the third floor of this popular modern development, is this pristine two bedroom apartment which offers approximately 820 sq ft of well proportioned living space. The apartment benefits from a south west facing aspect, and absorbs masses of natural light from the large floor to ceiling windows. The open plan living area houses a high specification kitchen, and provides access onto a generous private balcony which offers impressive views overlooking Central Park and also towards the Canary Wharf skyline. There are two double bedrooms, two luxury designer bathroom suites, plus there is excellent storage space offered throughout. The property also benefits from underfloor heating.

Residents will also benefit from access to a 24 hour concierge, and a fully equipped on-site gymnasium which offers state of the art equipment, plus access to various meeting rooms which are ideal for those currently working from home.

Local Information

Greenwich peninsula is a highly desirable location, which is positioned on the edge of the River Thames and within minutes of the O2 arena, which offers access to a wide range of shops, bars and restaurants. North Greenwich station is located within less than 0.5 miles, offering access into Canary Wharf in approximately 4 minutes, and to Bond Street in less than 30 minutes.

All times and distances are approximate.

Tenure

Leasehold(233 years remaining)

Energy Performance

EPC Rating = B

Viewing

All viewings will be accompanied and are strictly by prior arrangement through Savills Canary Wharf Office.

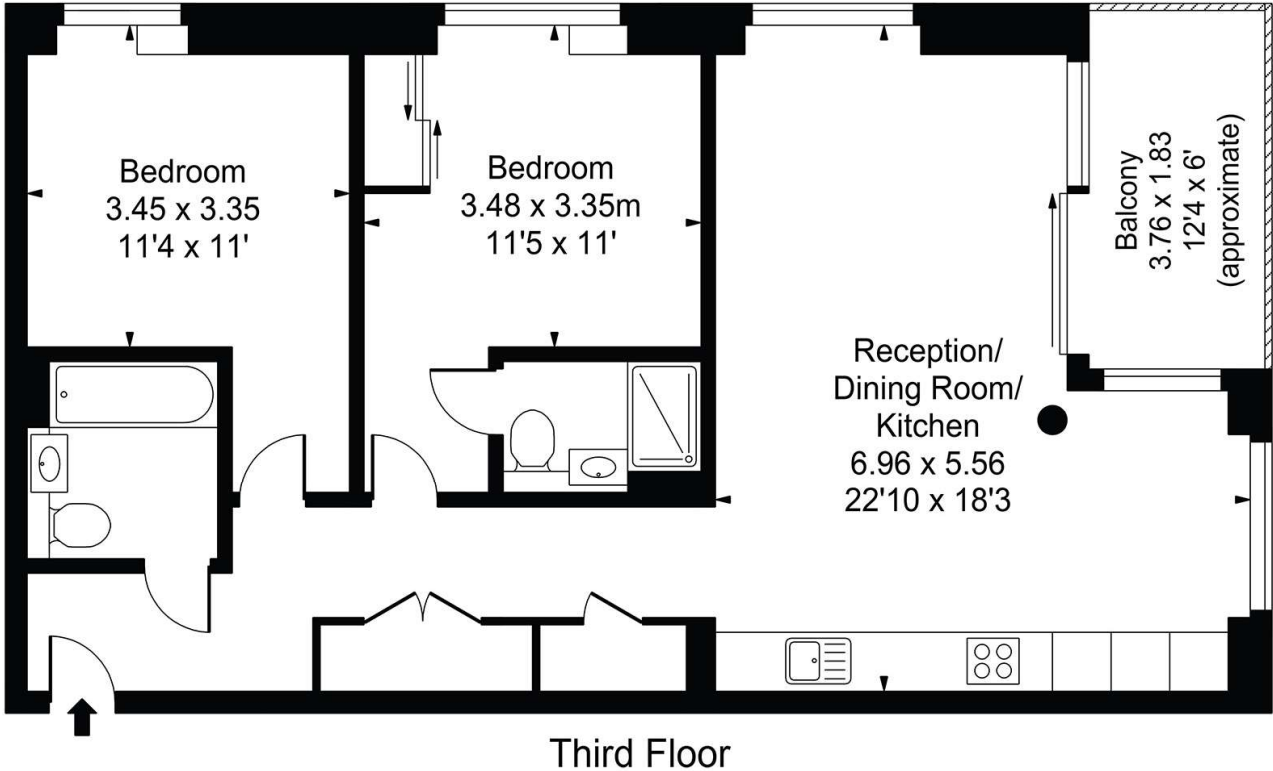
Telephone: +44 (0) 20 7531 2530.






Pilot Walk, Greenwich, London, SE10
Gross Internal Area 820 sq ft, 76.2 m²

Pilot Walk, SE10
Gross Internal Area(Approx)
Total = 76.18 Sq m / 820 Sq ft
For Illustration Purposes Only - Not To Scale
Floorplan by Humble Spy Photography Ltd.



Energy Efficiency Rating		
	Current	Potential
Very energy efficient - lower running costs		
(92+) A		
(81-91) B	86	86
(69-80) C		
(55-68) D		
(39-54) E		
(21-38) F		
(1-20) G		
Not energy efficient - higher running costs		
England, Scotland & Wales	EU Directive 2002/91/EC 	

Important Notice Savills, its clients and any joint agents give notice that 1: They are not authorised to make or give any representations or warranties in relation to the property either here or elsewhere, either on their own behalf or on behalf of their client or otherwise. They assume no responsibility for any statement that may be made in these particulars. These particulars do not form part of any offer or contract and must not be relied upon as statements or representations of fact. 2: Any areas, measurements or distances are approximate. The text, photographs and plans are for guidance only and are not necessarily comprehensive. It should not be assumed that the property has all necessary planning, building regulation or other consents and Savills have not tested any services, equipment or facilities. Purchasers must satisfy themselves by inspection or otherwise. 20201110JEAR

