



Positioned adjacent to Blackheath common is this superb apartment which is positioned on the top floor of this imposing art deco style residential building.

Dartmouth Court, Dartmouth Grove, Lewisham, London, SE10

£500,000 Share of Freehold



- 999 Year lease
- New kitchen / Modern bathroom suite
- Share of freehold
- Adjacent to Blackheath common
- Garage

Description

Spanning to approximately 743 sq ft internally is this well maintained two bedroom top floor apartment which is positioned in this art deco style development on the edge of Blackheath common. Internally, there is a spacious lounge / diner, a stylish fitted kitchen with a range of integral appliances, two generous double bedrooms and a quality fitted bathroom suite, plus there is a garage on offer.

The block has recently undergone extensive refurbishment to bring it up to its former glory, and leaseholders will now benefit from a share of freehold, as well as a 999 year lease.

Local Information

Dartmouth Court is located in one of the most desirable locations within the area, and is positioned centrally between Blackheath, Greenwich and Lewisham. There are several train / DLR stations within just 0.5 miles away, offering connections throughout London and beyond. There are also a variety of boutique shops, and trendy bars and restaurants within close proximity.

All times and distances are approximate.

Tenure

Share of Freehold

Local Authority

Lewisham

Energy Performance

EPC Rating = C

Viewing

All viewings will be accompanied and are strictly by prior arrangement through Savills Canary Wharf Office.
Telephone: +44 (0) 20 7531 2530.





Dartmouth Court, Dartmouth Grove, Lewisham, London, SE10
Gross Internal Area 743 sq ft, 69 m²

Antony Cherriman
Canary Wharf
+44 (0) 20 7531 2530
antony.cherriman@savills.com

 |  savills | savills.co.uk

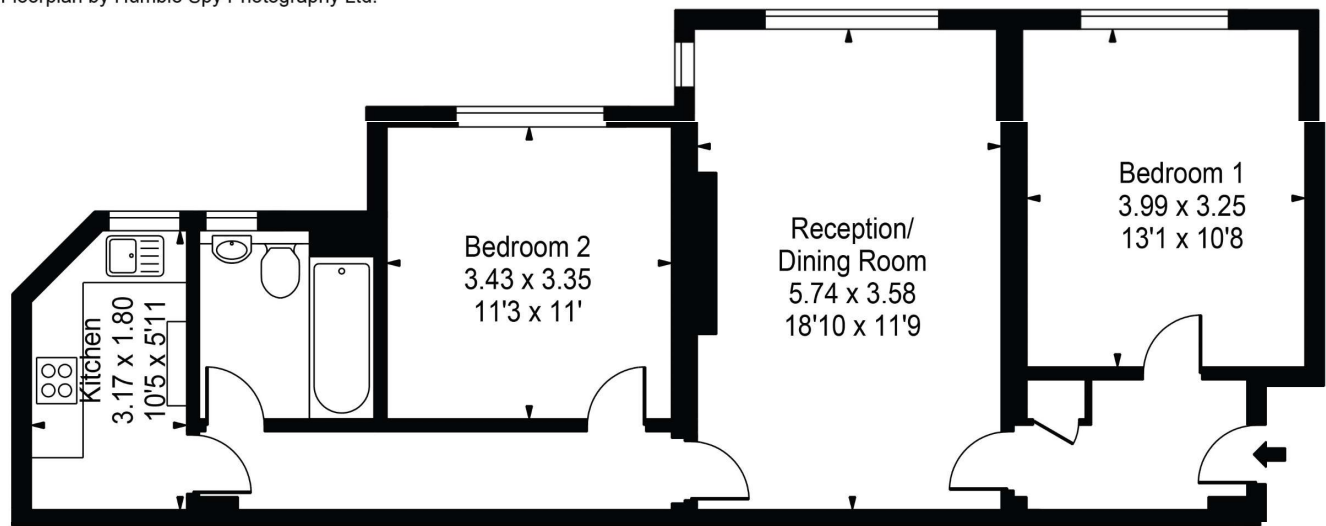
Dartmouth Court SE10

Gross Internal Area(Approx)

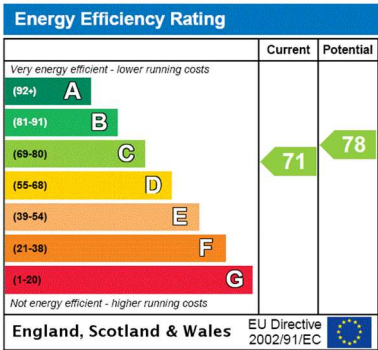
Total = 69.03 Sq m / 743 Sq ft

For Illustration Purposes Only - Not To Scale

Floorplan by Humble Spy Photography Ltd.



Third Floor



Important Notice Savills, its clients and any joint agents give notice that 1: They are not authorised to make or give any representations or warranties in relation to the property either here or elsewhere, either on their own behalf or on behalf of their client or otherwise. They assume no responsibility for any statement that may be made in these particulars. These particulars do not form part of any offer or contract and must not be relied upon as statements or representations of fact. 2: Any areas, measurements or distances are approximate. The text, photographs and plans are for guidance only and are not necessarily comprehensive. It should not be assumed that the property has all necessary planning, building regulation or other consents and Savills have not tested any services, equipment or facilities. Purchasers must satisfy themselves by inspection or otherwise. 20201023JEAR

