



A bright and airy apartment which is located in this attractive waterfront development.

Wheat Sheaf Close, Canary Wharf, London, E14

£435,000 Share of Freehold



- Modern two bedroom apartment
- Direct water views
- En suite shower room
- Residents parking
- Well maintained communal gardens

Description

Positioned on the second floor of this modern development is this well maintained two bedroom apartment which spans to approximately 630 sq ft internally. On offer is a spacious lounge, a fitted kitchen with integrated appliances, impressive views overlooking Millwall dock and towards the Canary Wharf skyline, plus an en suite to the master bedroom.

Additionally, there is ample storage, residents parking and well maintained communal grounds.

Please note the images in this brochure are for indicative purposes only as the property is currently tenanted.

Local Information

Wheat Sheaf Close is ideally located just off of Spindrift Avenue, close to local shops and amenities, while Mudchute (DLR) is close by providing transport links into the City and Canary Wharf, with access to multiple bars, restaurants and shops.

All times and distances are approximate.

Tenure

Share of Freehold

Local Authority

Tower Hamlets

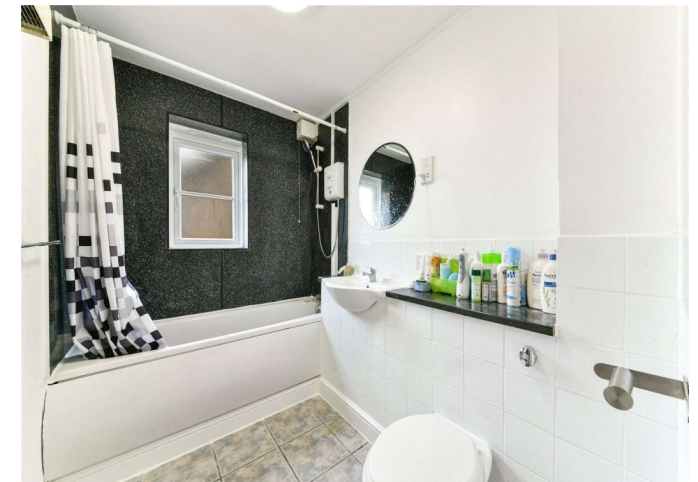
Energy Performance

EPC Rating = C

Viewing

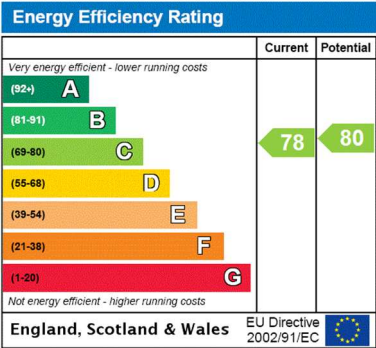
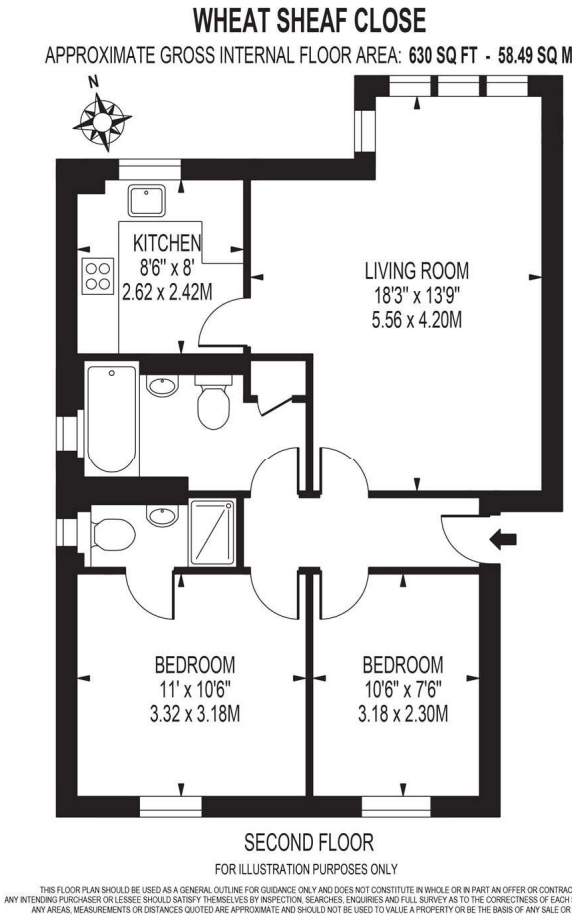
All viewings will be accompanied and are strictly by prior arrangement through Savills Canary Wharf Office.

Telephone: +44 (0) 20 7531 2530.





Wheat Sheaf Close, Canary Wharf, London, E14
Gross Internal Area 630 sq ft, 58.5 m²



Important Notice Savills, its clients and any joint agents give notice that 1: They are not authorised to make or give any representations or warranties in relation to the property either here or elsewhere, either on their own behalf or on behalf of their client or otherwise. They assume no responsibility for any statement that may be made in these particulars. These particulars do not form part of any offer or contract and must not be relied upon as statements or representations of fact. 2: Any areas, measurements or distances are approximate. The text, photographs and plans are for guidance only and are not necessarily comprehensive. It should not be assumed that the property has all necessary planning, building regulation or other consents and Savills have not tested any services, equipment or facilities. Purchasers must satisfy themselves by inspection or otherwise. 20200928JEAR

