



A bright and airy modern apartment which offers impressive views overlooking the River Thames. Residents will also benefit from a 24 hour concierge and on site gymnasium.

Jubilee Court, 20 Victoria Parade, London, SE10

£450,000 Leasehold (986 years remaining)



- Modern one bedroom apartment
- Direct river views
- Contemporary interior
- 24 Hour concierge
- Gymnasium

Description

Constructed in 2014 by Galliard Homes is this modern, one bedroom apartment which offers impressive views over the River Thames. The apartment offers approximately 518 sq ft of living space and a bright and airy feel throughout.

Internally, there is a spacious open plan living area, which houses a high gloss fitted kitchen with a range of integrated appliances, a modern bathroom suite and a spacious bedroom with fitted wardrobes.

The apartment also boasts direct views overlooking the river Thames, further enhanced by large floor to ceiling windows, plus all residents will benefit from access to a 24 hour concierge and an on-site gymnasium.

Local Information

Jubilee Court benefits from an on-site Waitrose supermarket, and is within close proximity of a number of shops restaurants and bars. Cutty Sark DLR is a 3 minutes away, offering access into Canary Wharf within 12 minutes and the City. Nearby Greenwich Station offers access to Central London within 8 minutes by train.

All times and distances are approximate.

Tenure

Leasehold (986 years remaining)

Local Authority

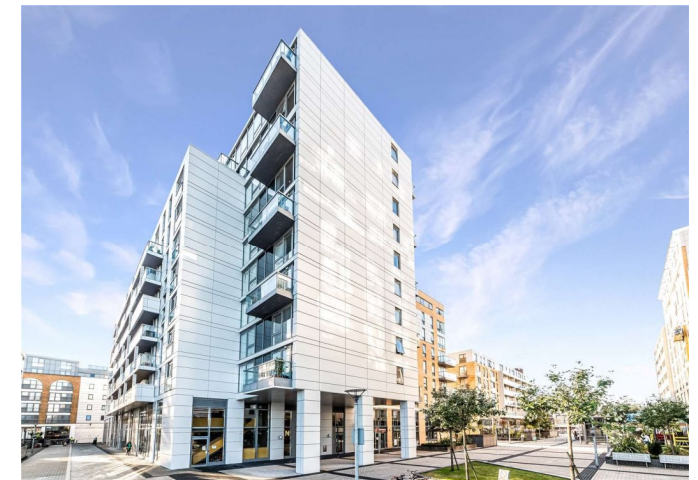
Royal London Borough Of Greenwich

Energy Performance

EPC Rating = B

Viewing

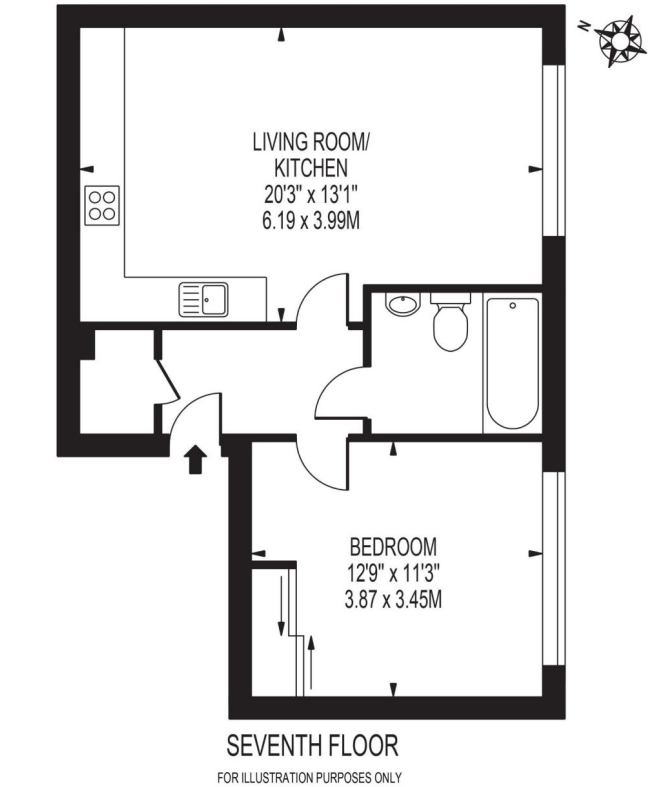
All viewings will be accompanied and are strictly by prior arrangement through Savills Canary Wharf Office.
Telephone: +44 (0) 20 7531 2530.



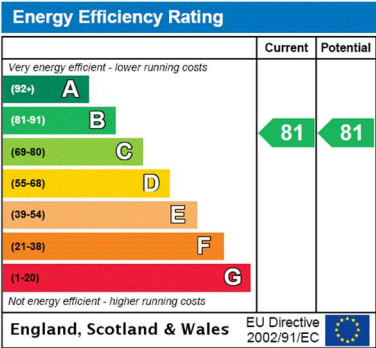


Jubilee Court, 20 Victoria Parade, London, SE10
Gross Internal Area 518 sq ft, 48.1 m²

JUBILEE COURT
APPROXIMATE GROSS INTERNAL FLOOR AREA: 518 SQ FT - 48.14 SQ M



THIS FLOOR PLAN SHOULD BE USED AS A GENERAL OUTLINE FOR GUIDANCE ONLY AND DOES NOT CONSTITUTE IN WHOLE OR IN PART AN OFFER OR CONTRACT.
ANY INTENDING PURCHASER OR LESSEE SHOULD SATISFY THEMSELVES BY INSPECTION, SEARCHES, ENQUIRIES AND FULL SURVEY AS TO THE CORRECTNESS OF EACH STATEMENT.
ANY AREAS, MEASUREMENTS OR DISTANCES QUOTED ARE APPROXIMATE AND SHOULD NOT BE USED TO VALUE A PROPERTY OR BE THE BASIS OF ANY SALE OR LET.



Important Notice Savills, its clients and any joint agents give notice that 1: They are not authorised to make or give any representations or warranties in relation to the property either here or elsewhere, either on their own behalf or on behalf of their client or otherwise. They assume no responsibility for any statement that may be made in these particulars. These particulars do not form part of any offer or contract and must not be relied upon as statements or representations of fact. 2: Any areas, measurements or distances are approximate. The text, photographs and plans are for guidance only and are not necessarily comprehensive. It should not be assumed that the property has all necessary planning, building regulation or other consents and Savills have not tested any services, equipment or facilities. Purchasers must satisfy themselves by inspection or otherwise. 20200928JEAR

