



Located on Narrow Street is this bright and airy apartment which offers approximately 696 sq ft of well presented living space.

Kings House, 1 Brightlingsea Place, London, E14

£475,000 Leasehold (102 years remaining)



- Exceptional one bedroom apartment
- Much larger than average
- Communal roof terrace
- Secure parking
- Ideal first time buy

Description

A superb modern one bedroom apartment which offers approximately 696 sq ft of living accommodation. This impressive unit benefits from great natural lighting and features a large living dining area, which leads directly to the fitted kitchen, which houses a range of integral appliances.

There is an extremely spacious double bedroom with fitted wardrobes, a three piece bathroom suite, secure underground parking, and residents will also have access to a communal roof terrace which boasts views of the Canary Wharf skyline.

Local Information

Kings House is perfectly located for all local amenities, offering a large selection of shops, bars and restaurants, including Gordon Ramsey's the Narrow. Transport connections are excellent with Limehouse DLR (0.1 miles) and Canary Wharf (Jubilee – 1 mile) offering great connectivity throughout the City and beyond.

All times and distances are approximate.

Tenure

Leasehold (102 years remaining)

Local Authority

Tower Hamlets

Energy Performance

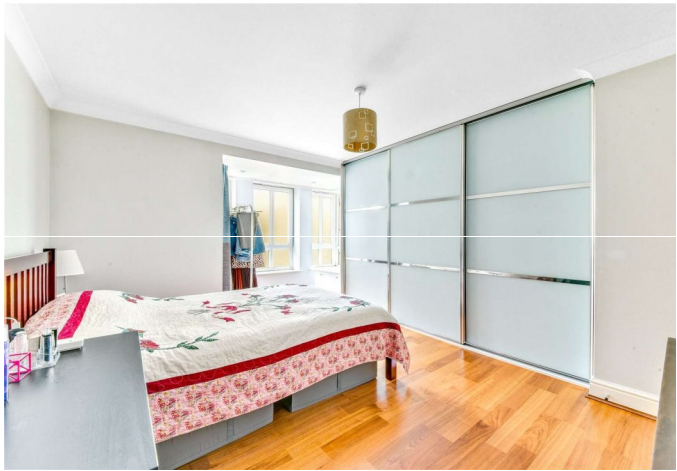
EPC Rating = D

Viewing



All viewings will be accompanied and are strictly by prior arrangement through Savills Canary Wharf Office.

Telephone: +44 (0) 20 7531 2530.

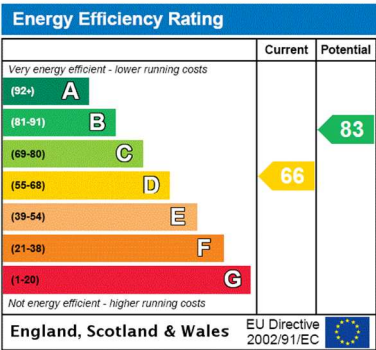
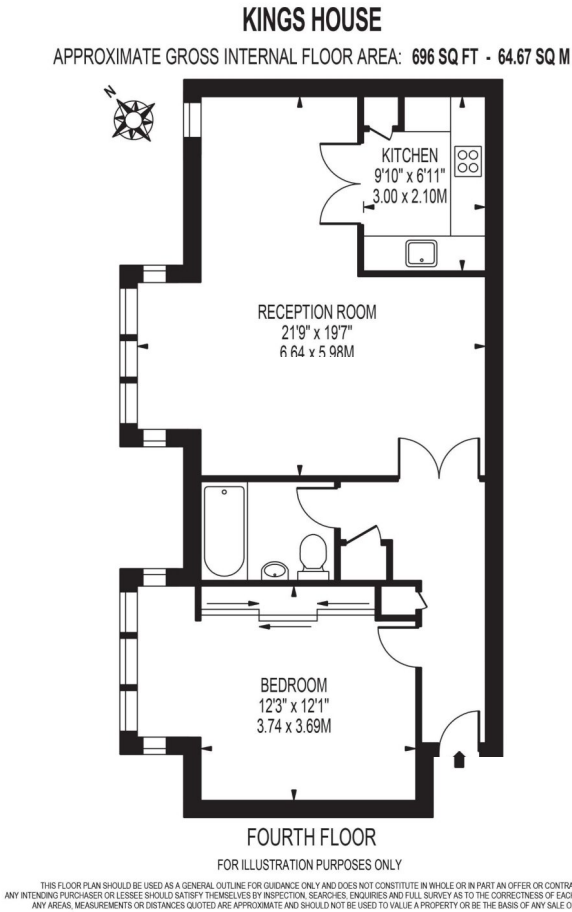




Kings House, 1 Brightlingsea Place, London, E14
Gross Internal Area 696 sq ft, 64.7 m²

 |  savills | savills.co.uk

Stephanie Dang
Canary Wharf
+44 (0) 20 7531 2530
stephanie.dang@savills.com



Important Notice Savills, its clients and any joint agents give notice that 1: They are not authorised to make or give any representations or warranties in relation to the property either here or elsewhere, either on their own behalf or on behalf of their client or otherwise. They assume no responsibility for any statement that may be made in these particulars. These particulars do not form part of any offer or contract and must not be relied upon as statements or representations of fact. 2: Any areas, measurements or distances are approximate. The text, photographs and plans are for guidance only and are not necessarily comprehensive. It should not be assumed that the property has all necessary planning, building regulation or other consents and Savills have not tested any services, equipment or facilities. Purchasers must satisfy themselves by inspection or otherwise. 20201023JEAR

