



A brand new 28th floor studio apartment situated in this ultra high specification Ballymore development, which is due for completion in 2020

Wardian West, 50 Marsh Wall, Canary Wharf, London, E14

Leasehold

savills

- 410 sq ft studio apartment
- Private balcony
- Impressive views
- On-site facilities
- Just minutes from Canary Wharf

Description

A spacious 410 sq ft, 28th floor studio apartment which will offer views across South Quay dock and towards Canary Wharf. Ballymore are highly recognised as a premium developer, and have a reputation for providing outstanding attention to detail throughout their schemes.

Internally there is a bespoke fitted kitchen, an impressive four piece bathroom suite, a private balcony and floor to ceiling windows. All residents will benefit from access to a vast array of on-site facilities including a 24 hour concierge, fully equipped gymnasium, indoor pool, cinema and sky lounge.

Local Information

The Wardian is positioned within 0.2 miles of Canary Wharf providing direct access to a number of shops restaurants and bars. Both the DLR and Jubilee line are just a short walk away offering great connectivity within London and beyond. All distances are approximate.

Tenure

Leasehold

Local Authority

Tower Hamlets

Energy Performance

EPC Rating = To be confirmed

Viewing

All viewings will be accompanied and are strictly by prior arrangement through Savills Canary Wharf Office. Telephone: +44 (0) 20 7531 2530.

Wardian West, 50 Marsh Wall, Canary Wharf, London, E14

Gross Internal Area 410 sq ft, 38.1 m²



savills

savills.co.uk

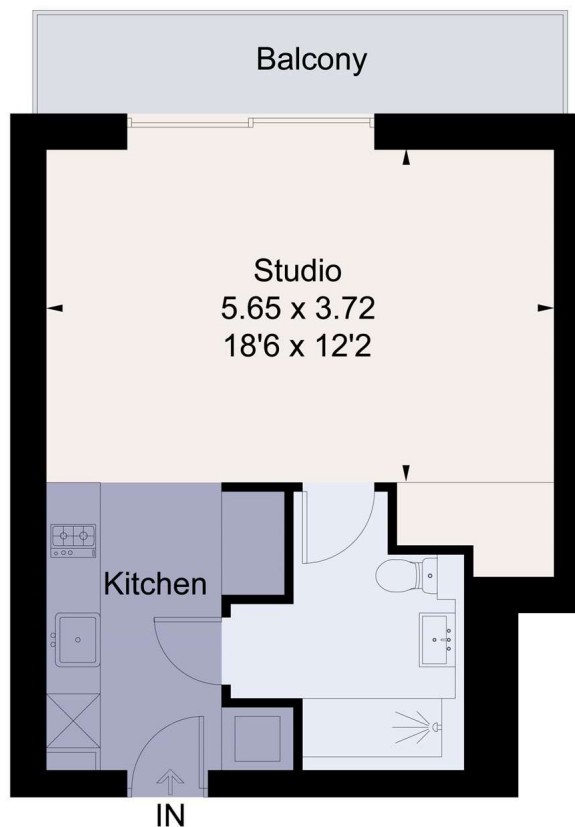
Eric Cheung

Canary Wharf

+44 (0) 20 7531 2530

eric.cheung@savills.com

Approximate Floor Area = 38.1 sq m / 410 sq ft



Drawn for illustration and identification purposes only by fourwalls-group.com ?????

Important notice Savills, its clients and any joint agents give notice that 1: They are not authorised to make or give any representations or warranties in relation to the property either here or elsewhere, either on their own behalf or on behalf of their client or otherwise. They assume no responsibility for any statement that may be made in these particulars. These particulars do not form part of any offer or contract and must not be relied upon as statements or representations of fact. 2: Any areas, measurements or distances are approximate. The text, photographs and plans are for guidance only and are not necessarily comprehensive. It should not be assumed that the property has all necessary planning, building regulation or other consents and Savills have not tested any services, equipment or facilities. Purchasers must satisfy themselves by inspection or otherwise. 20190410JEAR

