



Positioned upon the 20th floor is this spacious duplex apartment which has been well maintained throughout. The property benefits from panoramic views across the London skyline

Aragon Tower, George Beard Road, Deptford, SE8

Offers in excess of £400,000 Leasehold



- 20th floor duplex apartment
- Concierge service
- Impressive views over the London skyline
- Well maintained throughout
- No onward chain

Description

A well presented apartment which offers over 700 sq ft of living accommodation arranged over two floors. Positioned upon the 20th floor it also offers impressive panoramic views across the London skyline. Internally there is a large open plan kitchen / reception area which is great for entertaining, a modern bathroom suite, plenty of storage and an abundance of natural light from the larger than average windows. Residents will also benefit from an on-site concierge service.

Local Information

The property is located on the edge of the River Thames and has excellent public transport links with bus, river taxi and underground / overground services all within one mile. There are also a variety of shops, bars and restaurants positioned nearby.



Tenure

Leasehold

Local Authority

Royal London Borough of Greenwich

Energy Performance

EPC Rating = D

Viewing

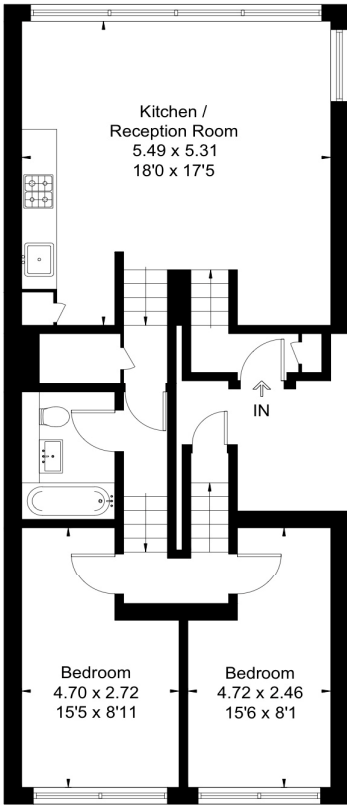
All viewings will be accompanied and are strictly by prior arrangement through Savills Canary Wharf Office.
Telephone: +44 (0) 20 7531 2530.



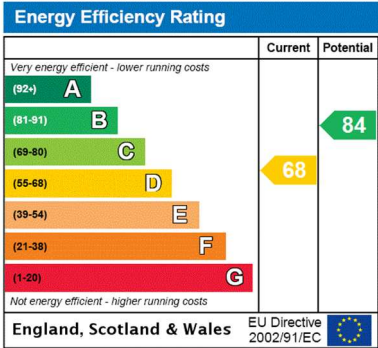


Aragon Tower, George Beard Road, Deptford, SE8
Gross Internal Area 705 sq ft, 65.5 m²

Approximate Area = 65.5 sq m / 705 sq ft



Surveyed and drawn in accordance with the International Property Measurement Standards (IPMS 2: Residential)
fourwalls-group.com 599779



Important notice Savills, its clients and any joint agents give notice that 1: They are not authorised to make or give any representations or warranties in relation to the property either here or elsewhere, either on their own behalf or on behalf of their client or otherwise. They assume no responsibility for any statement that may be made in these particulars. These particulars do not form part of any offer or contract and must not be relied upon as statements or representations of fact. 2: Any areas, measurements or distances are approximate. The text, photographs and plans are for guidance only and are not necessarily comprehensive. It should not be assumed that the property has all necessary planning, building regulation or other consents and Savills have not tested any services, equipment or facilities. Purchasers must satisfy themselves by inspection or otherwise. 20191115JEAR

