



Located within approximately 0.3 miles of Canary Wharf station is this luxurious apartment which is due for completion early 2020

10 Park Drive, Canary Wharf, London, E14

£1,195,000 Leasehold

savills

- Exceptional specification
- Impressive views over the canary wharf skyline
- Amazing on-site facilities, including access to third space gym
- Approximately 0.3 miles to canary wharf station
- EPC will be available upon completion

Description

A spacious 922 sq ft, 25th floor, 2 bedroom apartment which will offer impressive views directly over both South Quay dock, and the Canary Wharf skyline. Internally the overall specification will offer a premium finish, and purchasers will benefit from bespoke fitted kitchens, designer bathroom suites and a range of sumptuous fixtures and fittings throughout.

Additionally there are fitted wardrobes to both bedrooms, floor to ceiling windows, ample storage space and two private balconies. Residents will also benefit from a 24 hour concierge, on-site Third Space gymnasium and indoor pool and access to a sky-lounge.

Local Information

Positioned on the Canary Wharf estate, 10 Park Drive is located within a stones throw of a number of shops, bars and restaurants. Situated within 0.3 miles of the Jubilee line, and just 0.5 miles of the new Crossrail station, there are connections throughout London and beyond.

All times and distances are approximate.

Tenure

Leasehold

Local Authority

Tower Hamlets

Energy Performance

EPC Rating = To be confirmed upon completion.

Viewing

All viewings will be accompanied and are strictly by prior arrangement through Savills Canary Wharf Office.
Telephone: +44 (0) 20 7531 2530.

10 Park Drive, Canary Wharf, London, E14
Gross Internal Area 922 sq ft, m²

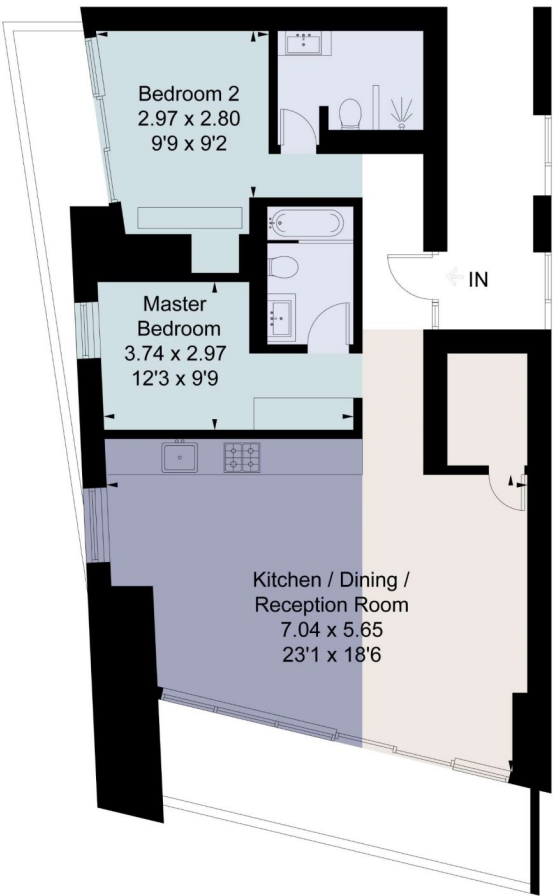


savills

savills.co.uk

Ben Butler
Canary Wharf
+44 (0) 20 7531 2530
ben.butler@savills.com

Approximate Floor Area = 85.7 sq m / 922 sq ft



Drawn for illustration and identification purposes only by fourwalls-group.com 244157

Important notice Savills, its clients and any joint agents give notice that 1: They are not authorised to make or give any representations or warranties in relation to the property either here or elsewhere, either on their own behalf or on behalf of their client or otherwise. They assume no responsibility for any statement that may be made in these particulars. These particulars do not form part of any offer or contract and must not be relied upon as statements or representations of fact. 2: Any areas, measurements or distances are approximate. The text, photographs and plans are for guidance only and are not necessarily comprehensive. It should not be assumed that the property has all necessary planning, building regulation or other consents and Savills have not tested any services, equipment or facilities. Purchasers must satisfy themselves by inspection or otherwise. 20191011JEAR

