



An outstanding period property which retains plenty of the original charm and character fronting on to Blackheath common.

The Paragon, London, SE3

Offers over £900,000 Share of Freehold



- Stunning Grade I listed period home
- Prestigious location, fronting Blackheath common
- Private courtyard
- Must be seen internally to be appreciated
- Original charm and character

Description

The Paragon is an historic piece of architecture dating back to circa 1800, which comprises of a mixture of attractive Grade I listed houses, which are positioned in a private road on the fringe of Blackheath common. The property offers plenty of original charm and character and boasts well presented accommodation set across three floors, accessed by a feature spiral staircase.

Internally, there is a charming lounge, a fitted kitchen with integral appliances, which leads out into a conservatory / breakfast area, directly leading into a quaint courtyard.

Furthermore, the principal bedroom occupies the top floor and offers an en suite and dressing area, in addition to a generous second bedroom and modern bathroom.

Local Information

The Paragon is regarded as one of the most prestigious roads within Blackheath, given its premier location on the cusp of Blackheath common, and being within just 0.5 miles of Greenwich Park. There are a vast selection of shops, boutiques and various exclusive bars and restaurants all within close proximity. Blackheath station also provides swift connections into London Bridge and beyond.

All times and distances are approximate.

Tenure

Share of Freehold

Local Authority

Royal London Borough of Greenwich

Energy Performance

EPC Rating = Exempt

Viewing

All viewings will be accompanied and are strictly by prior arrangement through Savills Canary Wharf Office.
Telephone: +44 (0) 20 7531 2530.





The Paragon, London, SE3
Gross Internal Area 948 sq ft, 88.1 m²



savills

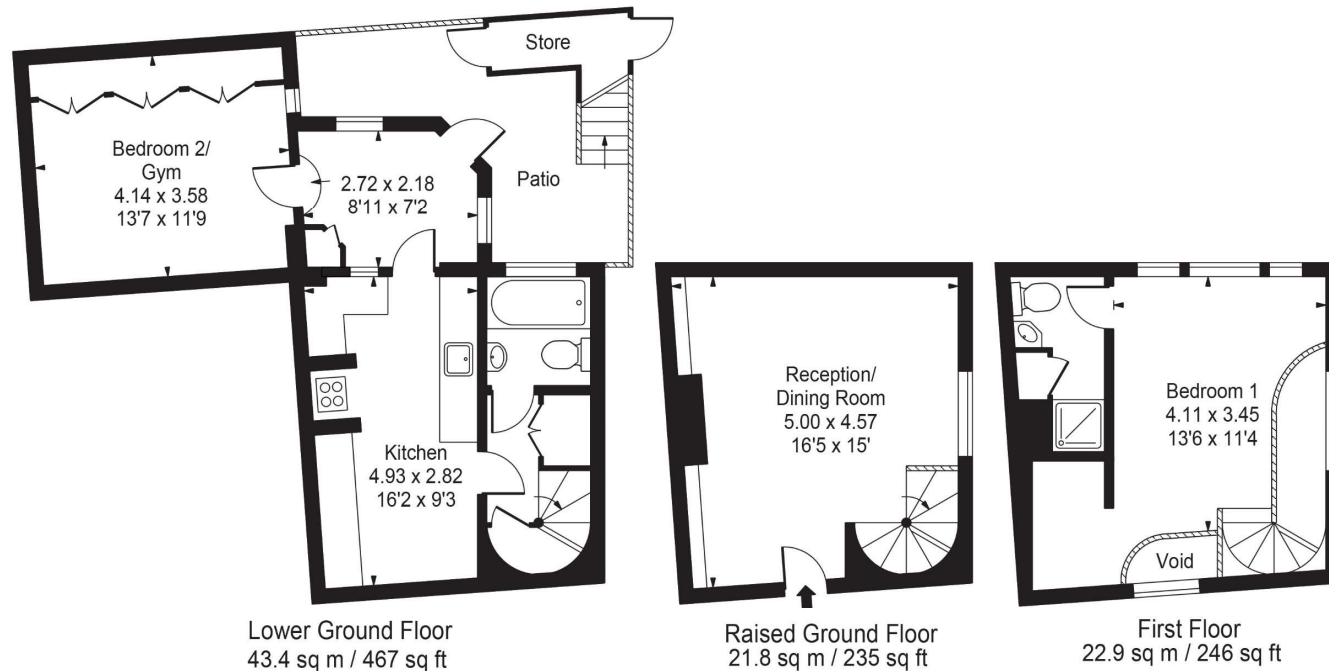
savills.co.uk

Antony Cherriman
Canary Wharf
+44 (0) 20 7531 2530
antony.cherriman@savills.com

The Paragon

Gross Internal Area(Approx)

Total = 88.07 Sq m / 948 Sq ft (Excluding Store & Void)



For Illustration Purposes Only - Not To Scale
Floorplan by Humble Spy Photography Ltd.
Produces exclusively for Savills

Important Notice Savills, its clients and any joint agents give notice that 1: They are not authorised to make or give any representations or warranties in relation to the property either here or elsewhere, either on their own behalf or on behalf of their client or otherwise. They assume no responsibility for any statement that may be made in these particulars. These particulars do not form part of any offer or contract and must not be relied upon as statements or representations of fact. 2: Any areas, measurements or distances are approximate. The text, photographs and plans are for guidance only and are not necessarily comprehensive. It should not be assumed that the property has all necessary planning, building regulation or other consents and Savills have not tested any services, equipment or facilities. Purchasers must satisfy themselves by inspection or otherwise. 20210722JEAR

