



A luxury two bedroom furnished apartment situated on the 8th floor of a prestigious 5* development.

Berkeley Tower, 48 Westferry Circus, London, E14

£775 pw (£3,358.33 pcm) plus fees apply, Furnished
Available from 15.02.2021



- Two bedrooms
- Dual aspect view
- Offered furnished
- 24 hour security
- Communal gardens
- River views from both bedrooms and living room

Local Information

Located on the edge of the Canary Wharf estate with links via the Jubilee line at Canary Wharf and DLR at Westferry.

About this property

The property benefits from a balcony, two double bedrooms, two bathrooms, river views from both bedrooms and dual aspect views from the living room.

The property is offered furnished.

Canary Riverside is located within minutes of Cabot Square and Canary Wharf with its abundance of shops, bars and supermarkets.

Furnishing

Furnished

Local Authority

Tower Hamlets
Council Tax Band = G

Energy Performance

EPC Rating = D

Viewing

All viewings will be accompanied and are strictly by prior arrangement through Savills Canary Wharf Lettings Office.
Telephone: +44 (0) 20 7531 2540.





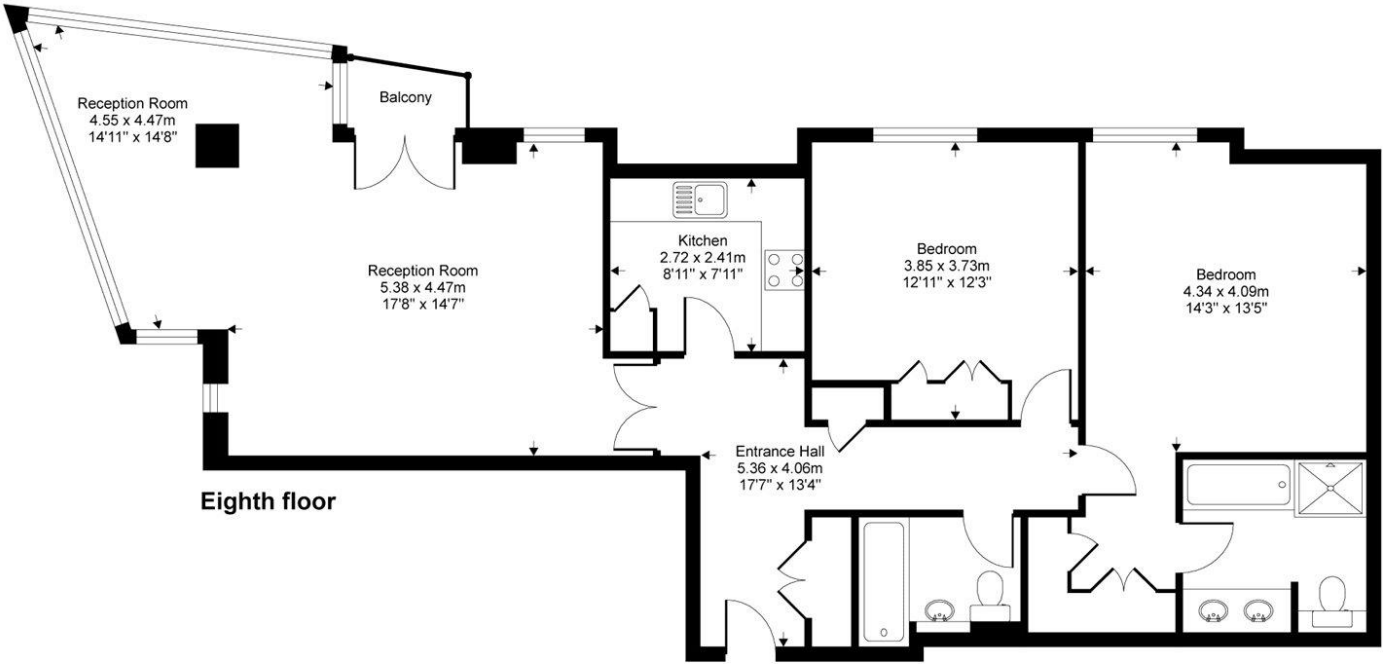
Berkeley Tower, 48 Westferry Circus, London, E14
Gross Internal Area 1116 sq ft, 103.7 m²


Keta Nazmiu
Canary Wharf Lettings
+44 (0) 20 7531 2540
alketa.nazmiu@savills.com

 onTheMarket.com |  savills | savills.co.uk

Westferry Circus, London, E14

Gross internal floor area (approx):
103.7 sq m / 1116 sq ft
For Identification only - Not to scale
Niche Communications



Energy Efficiency Rating		
	Current	Potential
Very energy efficient - lower running costs		
(92+) A		
(81-91) B		
(69-80) C		
(55-68) D	68	78
(39-54) E		
(21-38) F		
(1-20) G		
Not energy efficient - higher running costs		
England, Scotland & Wales	EU Directive 2002/91/EC 	

Important notice Savills, their clients and any joint agents give notice that: 1. They are not authorised to make or give any representations or warranties in relation to the property either here or elsewhere, either on their own behalf or on behalf of their client or otherwise. They assume no responsibility for any statement that may be made in these particulars. These particulars do not form part of any offer or contract and must not be relied upon as statements or representations of fact. 2. Any areas, measurements or distances are approximate. The text, images and plans are for guidance only and are not necessarily comprehensive. It should not be assumed that the property has all necessary planning, building regulation or other consents and Savills have not tested any services, equipment or facilities. Prospective tenants must satisfy themselves by inspection or otherwise. Please note that the local area may be affected by aircraft noise, you should make your own enquiries regarding any noise within the area before you make any offer.

*There are different rules and fees for different tenancy types. For details of our fees and charges please go to Savills.co.uk/tenant-fees. For more detailed information read our applicant guide at savills.co.uk/applicant-guide.
Hard copy available on request. . 20210113BEBY

