



Beautifully presented with stunning finishes throughout

Thorney Hedge Road, Chiswick, London, W4 5SB

Freehold

savills



5 bedrooms • double reception room • kitchen / dining room • 3 bathrooms (1 en suite) • cloakroom • utility room • private secluded garden • 251.97 sq m (2,712 sq ft)

#### Local information

Thorney Hedge Road is 0.2 miles from Gunnersbury station (Overground and District line) and 0.6 miles from Chiswick Park Underground station. Close to Chiswick High Road which offers a fantastic range of bars, restaurants, supermarkets and an ever-expanding range of delis and boutiques. Central London, Heathrow and the west of England are easily accessible via the A4 and M4.

#### About this property

Throughout the house many period features have been retained.

The ground floor offers a guest cloakroom and a large double reception room with grand proportions and terrific family entertaining space. There are stairs leading down to the impressive kitchen which is awash with natural light provided by large bi-folding doors opening out to the garden.

The lower ground floor houses a large utility room and a cellar which has plenty of storage.

The first floor comprises a large master suite with a fabulous en suite bathroom with dressing area, situated at the front of the house.

Also on this floor is a further good size bedroom with a Juliet balcony overlooking the Garden, plus a family bathroom.

The second floor provides three further large bedrooms and a bathroom.

Overall this is a tremendously appealing and spacious house which has been cleverly remodelled to create a versatile and stylish family house.

**\*\*Please note the photographs were taken in June 2017\*\***

#### Tenure

Freehold

#### Local Authority

London Borough of Hounslow

EPC rating = E

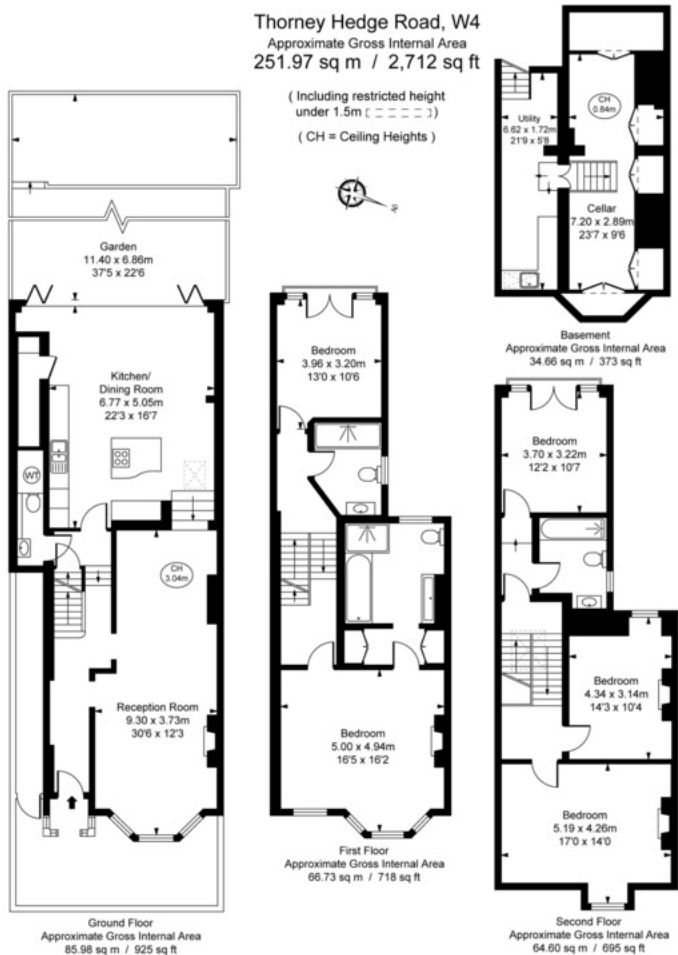
#### Viewing

Strictly by appointment with Savills

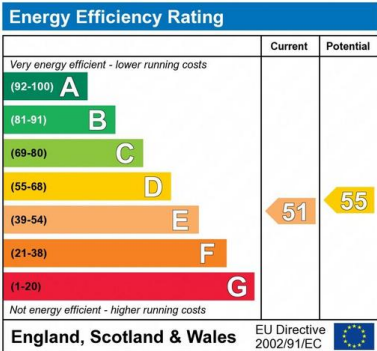








This plan is not to scale. It is for guidance and not for valuation purposes.  
All measurements and areas are approximate only, and have been prepared in accordance with the current edition of the RICS Code of Measuring Practice.  
© Fulham Performance



**Important notice:** Savills, their clients and any joint agents give notice that 1: They are not authorised to make or give any representations or warranties in relation to the property either here or elsewhere, either on their own behalf or on behalf of their client or otherwise. They assume no responsibility for any statement that may be made in these particulars. These particulars do not form part of any offer or contract and must not be relied upon as statements or representations of fact. 2: Any areas, measurements or distances are approximate. The text, photographs and plans are for guidance only and are not necessarily comprehensive. It should not be assumed that the property has all necessary planning, building regulation or other consents and Savills have not tested any services, equipment or facilities. Purchasers must satisfy themselves by inspection or otherwise. 91028091 Job ID: 135623 User initials: EF