



Stylish three bedroom house with a west facing garden

Fielding Road, Chiswick, London, W4

£1,350,000 Freehold

savills

3 bedrooms • reception room • kitchen / dining room • family bathroom • shower room (en suite) • cloakroom • garden
• 1537 sq ft, 142.79 m²

Local Information

Fielding Road is situated off The Avenue, providing easy access to Central London, The A4 and M4 for Heathrow Airport and the west of England. Turnham Green underground station (District line) is very close by.

About this property

A delightful and immaculately presented three bedroom terraced house situated on a quiet leafy street on the borders of Bedford Park.

The layout of the ground floor provides two distinct spaces. At the front of the house is an elegant reception room with feature fireplace, built in shelving and a bay window, allowing for exceptional entertaining space. At the rear of the house is a striking kitchen/dining room which is awash with modern appliances and has views over the garden. There is also a useful utility/storage area accessed from the dining room.

The first floor offers a spacious landing from which there are two bedrooms and a family bathroom. The bedroom situated at the front of the house offers floor to ceiling fitted built in wardrobes and is beautifully bright. The bedroom at the back of the house has views looking out over the garden. The second floor has been successfully extended providing a large bedroom with very generous proportions and an en suite bathroom.

Outside there is a stunning paved walled garden which is excellent for entertaining.

Overall this is a fabulous family house situated in a quiet and convenient location.

Tenure

Freehold

Local Authority

Ealing

Energy Performance

EPC Rating = C

Viewing

All viewings will be accompanied and are strictly by prior arrangement through Savills Chiswick Office.
Telephone: +44 (0) 20 8987 5550.



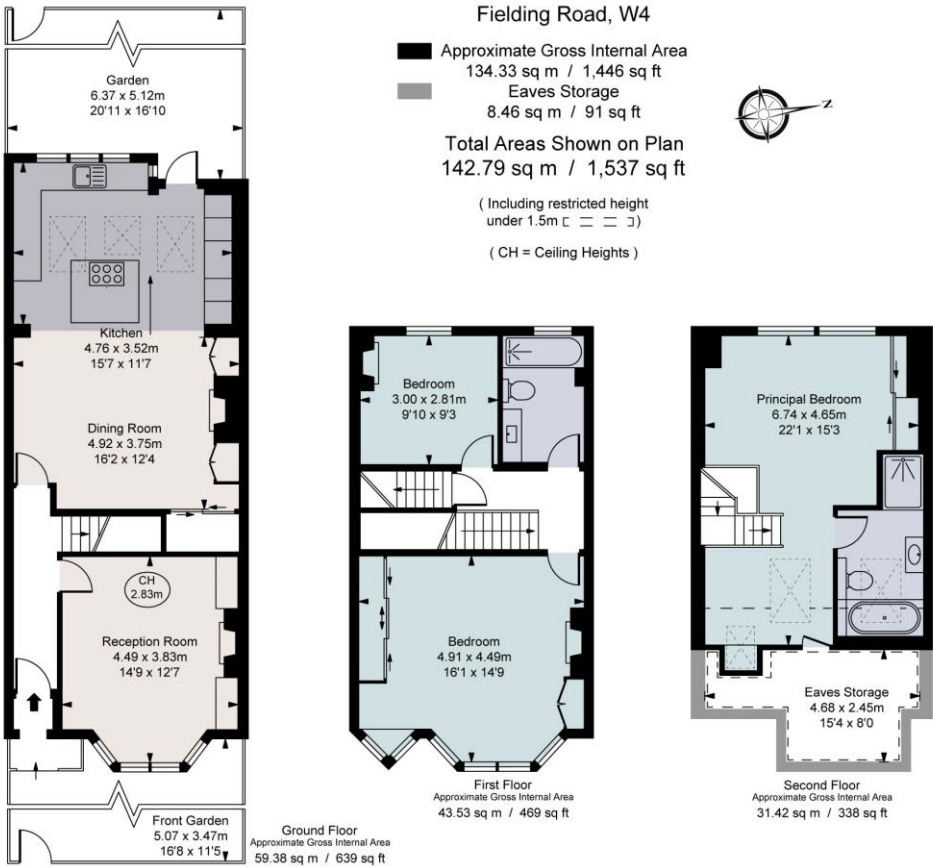


Fielding Road, Chiswick, London, W4
Gross Internal Area 1537 sq ft, 142.79 m²

Euan Rollo
Chiswick
+44 (0) 20 8987 5550
euan.rollo@savills.com



Score	Energy rating	Current	Potential
92+	A		
81-91	B		83 B
69-80	C	71 C	
55-68	D		
39-54	E		
21-38	F		
1-20	G		



This plan is not to scale. It is for guidance and not for valuation purposes.
All measurements and areas are approximate only, and have been prepared in accordance with the current edition of the RICS Code of Measuring Practice.
© Fulham Performance



Important Notice Savills, its clients and any joint agents give notice that 1: They are not authorised to make or give any representations or warranties in relation to the property either here or elsewhere, either on their own behalf or on behalf of their client or otherwise. They assume no responsibility for any statement that may be made in these particulars. These particulars do not form part of any offer or contract and must not be relied upon as statements or representations of fact. 2: Any areas, measurements or distances are approximate. The text, photographs and plans are for guidance only and are not necessarily comprehensive. It should not be assumed that the property has all necessary planning, building regulation or other consents and Savills have not tested any services, equipment or facilities. Purchasers must satisfy themselves by inspection or otherwise. 20210414EEFM

