



A charming three bedroom house with generous garden

Meon Road, London, W3

Freehold

savills

- 3 bedrooms • double reception room • kitchen / dining room • conservatory • 2 shower rooms • cloakroom • loft room/space • 147.42 (1,587 sq ft)

Location

Meon Road is situated in South Acton, a quiet residential area on the borders of Chiswick. The area is incredibly popular due to the excellent Ark Priory School nearby. The Overground runs from South Acton Train Station.

The E3 bus stop at the end of the road serves Chiswick and Turnham Green Station (district line) approximately every 7 minutes.

Description

A pretty Victorian terraced house on a lovely residential road in South Acton.

The house is currently arranged over two floors, with a loft space with potential for extension. The house retains a largely original arrangement of space, with many period features throughout.

The property could be extended subject to planning permission to increase the kitchen space downstairs and to add a loft conversion. The property benefits from a secluded rear garden.

This is an exciting project appealing to a variety of purchasers including developers, families and investors.

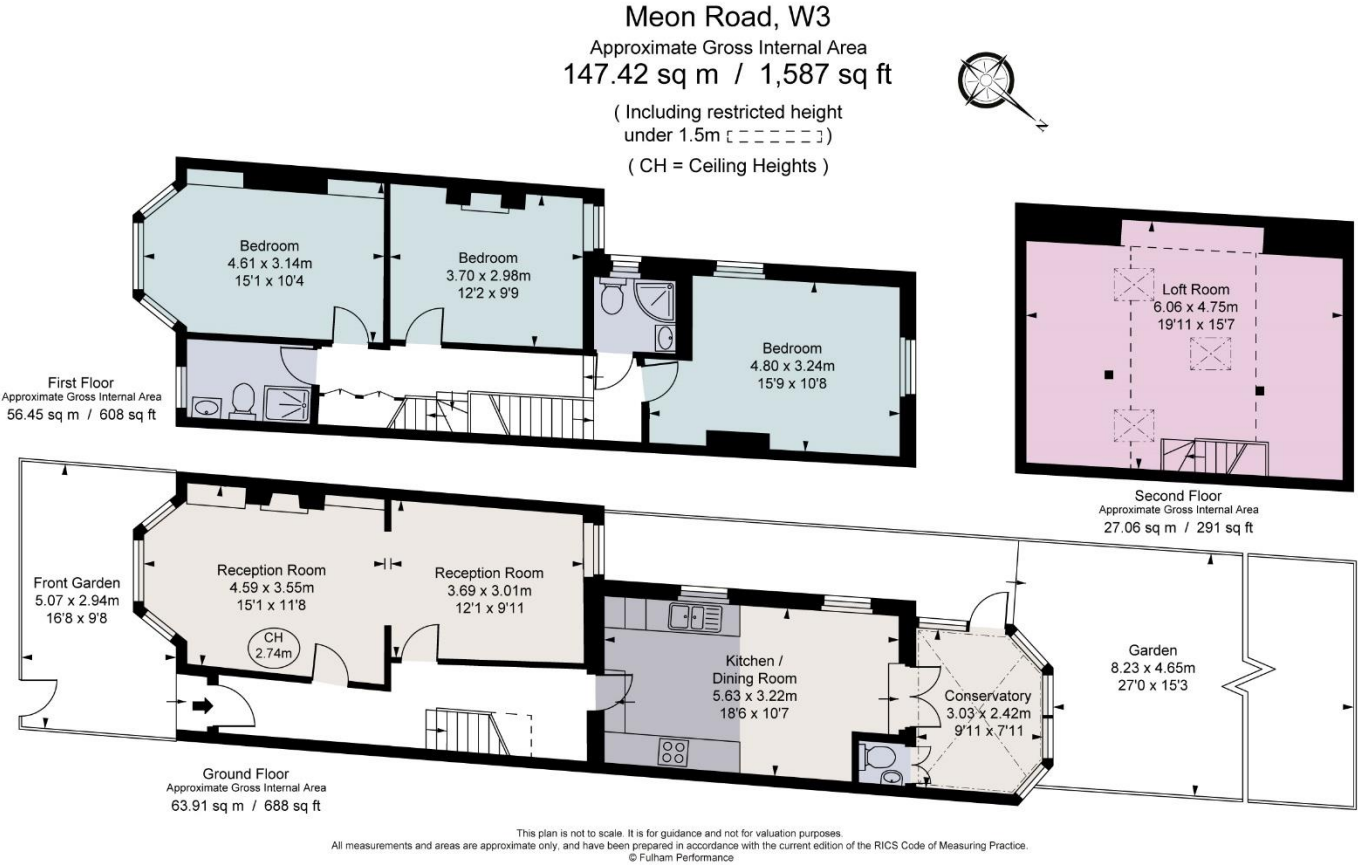




Meon Road, London, W3
Gross Internal Area 1,587 sq ft, 147.4 m²

Euan Rollo
Chiswick
+44 (0) 20 8987 5550
euan.rollo@savills.com

  savills | savills.co.uk




Tenure
Freehold

Local Authority
Ealing Council

Energy Performance
EPC Rating = D

Viewing
All viewings will be accompanied and
are strictly by prior arrangement
through Savills Chiswick Office.
Telephone: +44 (0) 20 8987 5550.

Energy Efficiency Rating		
	Current	Potential
Very energy efficient - lower running costs		
(92+) A		
(81-91) B		81
(69-80) C		
(55-68) D	61	
(39-54) E		
(21-38) F		
(1-20) G		
Not energy efficient - higher running costs		
England, Scotland & Wales	EU Directive 2002/91/EC	

Important Notice Savills, its clients and any joint agents give notice that 1: They are not authorised to make or give any representations or warranties in relation to the property either here or elsewhere, either on their own behalf or on behalf of their client or otherwise. They assume no responsibility for any statement that may be made in these particulars. These particulars do not form part of any offer or contract and must not be relied upon as statements or representations of fact. 2: Any areas, measurements or distances are approximate. The text, photographs and plans are for guidance only and are not necessarily comprehensive. It should not be assumed that the property has all necessary planning, building regulation or other consents and Savills have not tested any services, equipment or facilities. Purchasers must satisfy themselves by inspection or otherwise. 20201130EEFM

