



Immaculately presented two bedroom apartment with balcony

**Allen House, Heritage Walk, Brentford, TW8**

Leasehold



- 2 bedrooms • open plan kitchen / reception / dining room • family bathroom • shower room(1 en suite) • garage • balcony • communal gardens • EPC = E
- 91.6 sq m (987 sq ft)

### Location

Heritage Walk is an exclusive development built by Berkeley homes in 2017. Situated near Kew Bridge, this flat is within easy reach of Kew Bridge mainline station (London Waterloo from 30 minutes), and also Gunnersbury Station (District Line and Overground Services). Local amenities including Sainsburys Local, Costa and Hammonds Butcher and Delicatessen can be found as part of the Kew Bridge Development, and the flat is within easy reach of the River Thames, and the pubs of Strand on the Green.

### Description

A modern and beautifully presented two bedroom apartment on the second floor of this popular development with a south facing balcony.

Upon entrance to the flat you are welcomed by a generous hallway with ample storage space. There is a magnificent open plan kitchen/reception space with an abundance of natural light, wooden flooring and generous ceiling height. The kitchen is equipped with modern integrated Smeg appliances including oven, full height fridge freezer and dishwasher.

The principal bedroom is of a good size with fitted wardrobes and an en suite shower room boasting Hansgrohe fittings. There is a further double bedroom again with fitted wardrobes and a main bathroom.

The development has extensive communal grounds, undercroft parking, lift, residents gym, concierge and bike storage.

Overall this immaculate flat would be ideal for a first time buyer or investor, with contemporary features throughout within easy reach of central London.

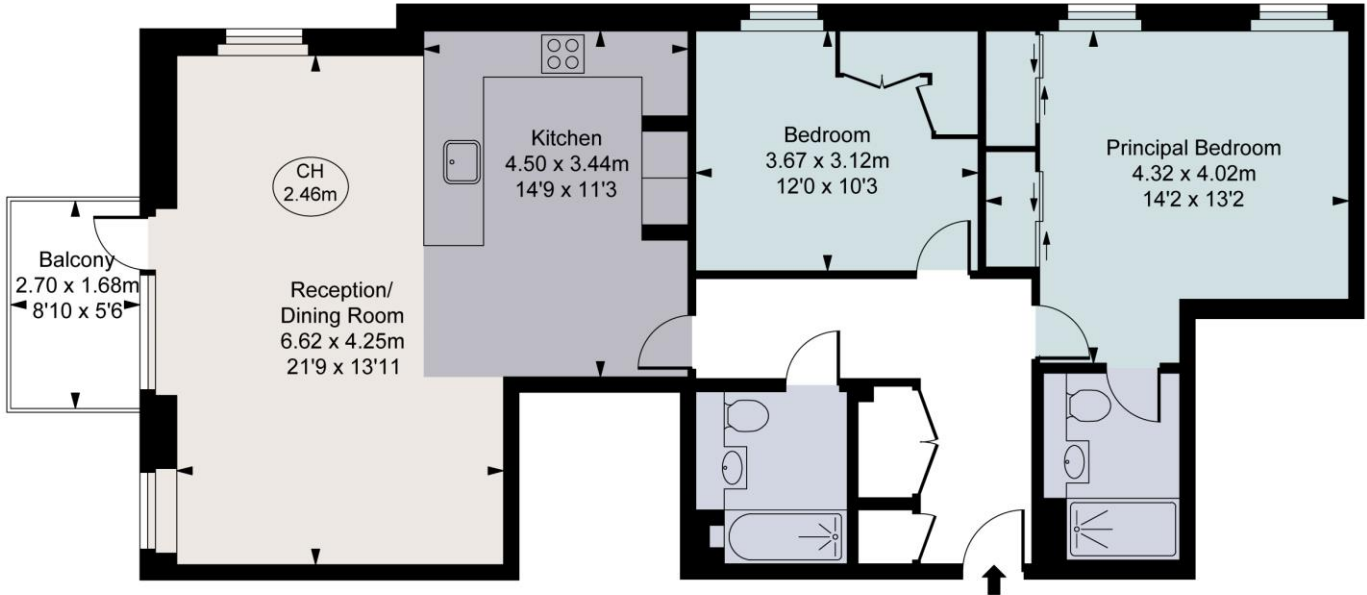






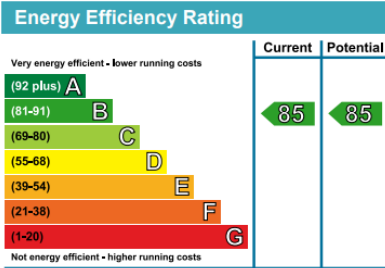
Allen House, Heritage Place, Brentford, TW8  
Gross Internal Area 987 sq ft, 91.7 m<sup>2</sup>

Allen House,  
Heritage Place, TW8  
Approximate Gross Internal Area  
91.68 sq m / 987 sq ft  
( CH = Ceiling Heights )



Second Floor

This plan is not to scale. It is for guidance and not for valuation purposes.  
All measurements and areas are approximate only, and have been prepared in accordance with the current edition of the RICS Code of Measuring Practice.  
© Fulham Performance



**Important Notice** Savills, its clients and any joint agents give notice that 1: They are not authorised to make or give any representations or warranties in relation to the property either here or elsewhere, either on their own behalf or on behalf of their client or otherwise. They assume no responsibility for any statement that may be made in these particulars. These particulars do not form part of any offer or contract and must not be relied upon as statements or representations of fact. 2: Any areas, measurements or distances are approximate. The text, photographs and plans are for guidance only and are not necessarily comprehensive. It should not be assumed that the property has all necessary planning, building regulation or other consents and Savills have not tested any services, equipment or facilities. Purchasers must satisfy themselves by inspection or otherwise. 20201106EEFM

