



SUPERB TOP FLOOR TWO BEDROOM MANSION FLAT WITH LIFT ACCESS

HEATHFIELD COURT,
HEATHFIELD TERRACE, W4

Guide Price £649,500, Share of Freehold



SUPERB TOP FLOOR TWO BEDROOM MANSION FLAT WITH

HEATHFIELD COURT
HEATHFIELD TERRACE, LONDON

Guide Price £649,500, Share of Freehold

2 bedrooms • reception room • kitchen • shower
room • fifth floor • off-street parking • lift access
• communal garden • portered • 62.67 sq m
(675 sq ft)

- EPC Rating = E
- Council Tax = D

Description

A fabulous lateral two-bedroom apartment, located on the top floor of a much sought after mansion block in central Chiswick. The flat has been refurbished throughout with high quality finishes. There is a large reception room which boasts large windows views across the communal gardens. A separate kitchen is highly specified with fitted appliances and space for a breakfast table. The well-proportioned master bedroom has double-aspect south facing windows ensuring plenty of natural light. There is also a second double bedroom with fitted wardrobes and modern shower room. Heathfield Court is immaculately maintained throughout, with a porter, lift access and 24 hour security. The property comes with off street private residents parking.

Please note these photographs were taken in 2017.

Tenure

Share of Freehold

Local Authority

London Borough Of Hounslow, London

Viewing

Strictly by appointment with Savills.



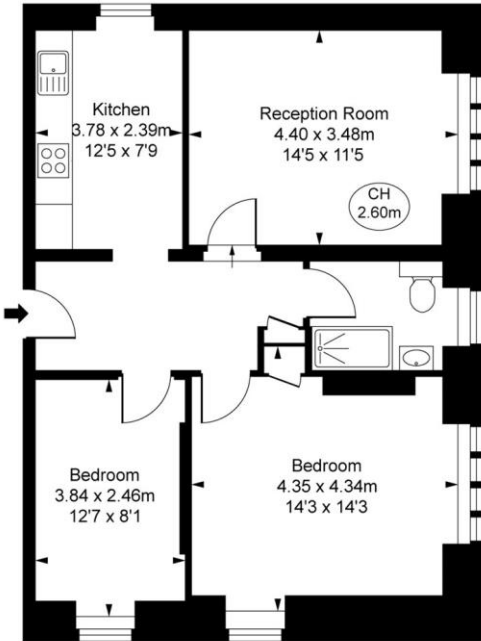


FLOORPLANS

Gross internal area: 675 sq ft, 62.7 m²



Heathfield Court,
Heathfield Terrace, W4
Approximate Gross Internal Area
62.67 sq m / 675 sq ft
(CH = Ceiling Heights)



Fifth Floor

ILLUSTRATION FOR IDENTIFICATION PURPOSES ONLY
ALL MEASUREMENTS ARE MAXIMUM, AND INCLUDE WINDOW BAYS AND WARDROBES WHERE APPLICABLE
THIS PLAN MUST NOT BE REPRODUCED BY ANY OTHER PERSON WITHOUT PERMISSION

Chiswick
Harry Pearson
hpearson@savills.com
+44 (0) 20 8987 5550

savills.co.uk

Savills, their clients and any joint agents give notice that: 1. They are not authorised to make or give any representations or warranties in relation to the property either here or elsewhere, either on their own behalf or on behalf of their client or otherwise. They assume no responsibility for any statement that may be made in these particulars. These particulars do not form part of any offer or contract and must not be relied upon as statements or representations of fact. 2. Any areas, measurements or distances are approximate. The text, images and plans are for guidance only and are not necessarily comprehensive. It should not be assumed that the property has all necessary planning, building regulation or other consents and Savills have not tested any services, equipment or facilities. Purchasers must satisfy themselves by inspection or otherwise. 20190426HHTV

