



Superbly light and spacious split level flat

Ennismore Avenue, Chiswick, London W4 1SF

Share of Freehold



2 bedrooms • open plan kitchen/reception room
• 2 bathrooms (1 en suite) • eaves storage •
85.44 sq m (920 sq ft)

Local information

Ennismore Avenue is ideally placed for Turnham Green Terrace and Chiswick High Road. Turnham Green Underground station (District line) is close by. This location offers easy access to central London via the A4, and via the M4 for Heathrow Airport and the west of England.

About this property

A fabulous two bedroom apartment located in central Chiswick which has been modernised throughout.

The first floor comprises of two spacious double bedrooms, both with feature fireplaces and high ceilings. The master bedroom also has an en suite shower room, plenty of room for wardrobes and two large windows.

The second double bedroom has built-in wardrobes and

there is also a further shower room on this floor. A stylish staircase with exposed brick work leads to an impressive lateral open plan kitchen and reception room with floor to ceiling windows offering an abundance of natural light and fantastic views towards central London. The kitchen is modern with integrated appliances and solid wooden floors.

Please note that these photographs were taken in 2015.

Tenure

Share of Freehold

Viewing

Strictly by appointment with Savills





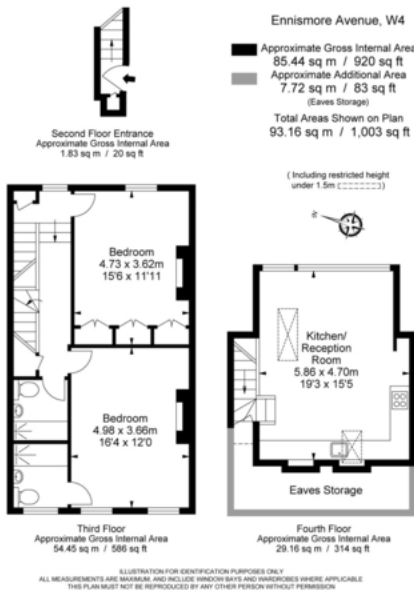
Ennismore Avenue, Chiswick, London W4 1SF



savills

savills.co.uk

Savills Chiswick
020 8987 5550
chiswick@savills.com



Energy Efficiency Rating		
	Current	Potential
Very energy efficient - lower running costs		
(92-100) A		
(81-91) B		
(69-80) C		
(55-68) D	68	72
(39-54) E		
(21-38) F		
(1-20) G		
Not energy efficient - higher running costs		
England, Scotland & Wales EU Directive 2002/91/EC		

Important notice: Savills, their clients and any joint agents give notice that 1: They are not authorised to make or give any representations or warranties in relation to the property either here or elsewhere, either on their own behalf or on behalf of their client or otherwise. They assume no responsibility for any statement that may be made in these particulars. These particulars do not form part of any offer or contract and must not be relied upon as statements or representations of fact. 2: Any areas, measurements or distances are approximate. The text, photographs and plans are for guidance only and are not necessarily comprehensive. It should not be assumed that the property has all necessary planning, building regulation or other consents and Savills have not tested any services, equipment or facilities. Purchasers must satisfy themselves by inspection or otherwise. 91026062 Job ID: 133687 User initials: HT

