



Spectacular penthouse apartment with picturesque river views

Rothschild House, Kew Bridge Road, Brentford, Middlesex, TW8

£7,500 pcm plus fees apply, Unfurnished
Available now



3 bedrooms • 3 bathroom/ shower rooms • superb panoramic views • open plan reception space • several outside areas including very large roof terrace • secure underground parking • 24 hour concierge/ security • unfurnished

Local Information

The property offers an excellent location with access to Kew Gardens with its selection of boutique shops and underground station (district line) just the other side of Kew Bridge. The nearby town of Richmond offers comprehensive shopping facilities and restaurants with local attractions including Kew Gardens and Richmond Park.

The A4 / M4 is moments away giving rapid access east to central London, and west to Heathrow and the west of England.

About this property

An exceptional, recently completed Penthouse apartment with direct river views and forming part of this exclusive Kew Bridge development close to the amenities of Kew, Richmond & Chiswick.

Arranged over 2 levels, the standard of the accommodation is superb, with the owners having made many upgrades to the original specification. The principal reception room is incredibly impressive with panoramic views over the surrounding area and following the Thames towards Central London. There are floor-to-ceiling windows, a selection of outside spaces, an open plan modern kitchen with integrated Miele appliances and solid wood floors.

There are three excellent size bedrooms and three bathroom / shower rooms with marble tiling, Villeroy and Boch suites, a separate guest cloakroom and plenty of storage throughout the apartment. Further benefits include an integrated media system, comfort cooling to the principal rooms, video entry system and 24-hour concierge / security. There is designated secure underground parking, and a residents' gym.

Furnishing

Unfurnished

Local Authority

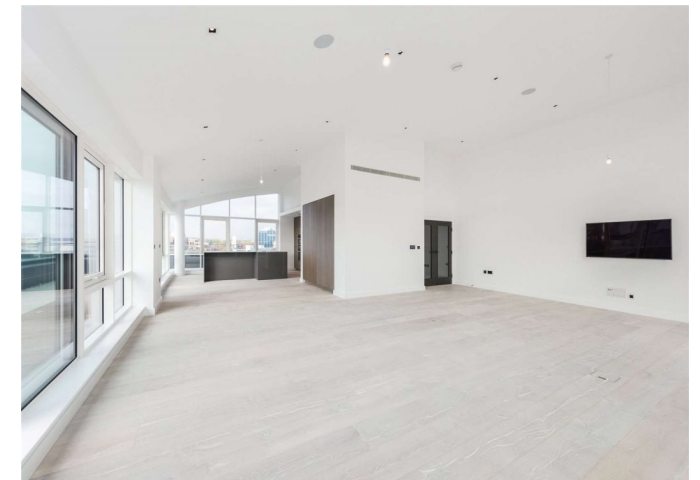
London Borough Of Hounslow, London

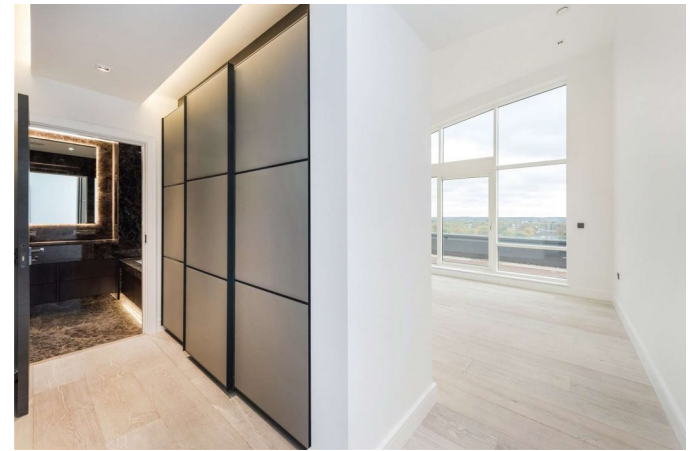
Energy Performance

EPC Rating = C

Viewing

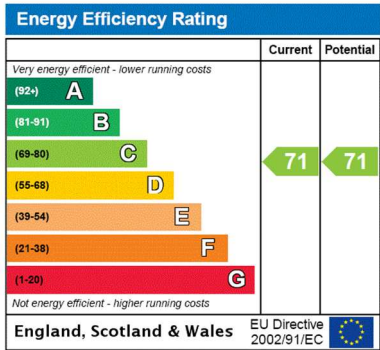
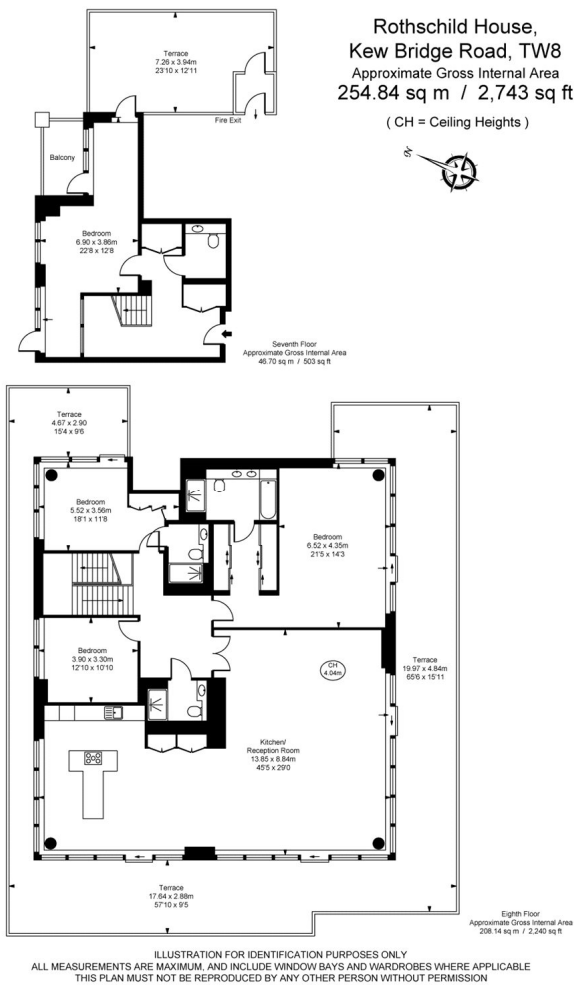
All viewings will be accompanied and are strictly by prior arrangement through Savills Chiswick Lettings Office. Telephone: +44 (0) 20 8987 5566.





Rothschild House, 8 Kew Bridge Road, Brentford, Middlesex, TW8
Gross Internal Area 2743 sq ft, 254.8 m²

Bree Southam
Chiswick Lettings
+44 (0) 20 8987 5566
bree.southam@savills.com



Important notice Savills, their clients and any joint agents give notice that: 1. They are not authorised to make or give any representations or warranties in relation to the property either here or elsewhere, either on their own behalf or on behalf of their client or otherwise. They assume no responsibility for any statement that may be made in these particulars. These particulars do not form part of any offer or contract and must not be relied upon as statements or representations of fact. 2. Any areas, measurements or distances are approximate. The text, images and plans are for guidance only and are not necessarily comprehensive. It should not be assumed that the property has all necessary planning, building regulation or other consents and Savills have not tested any services, equipment or facilities. Prospective tenants must satisfy themselves by inspection or otherwise. Please note that the local area may be affected by aircraft noise, you should make your own enquiries regarding any noise within the area before you make any offer.

*There are different rules and fees for different tenancy types. For details of our fees and charges to go to Savills.co.uk/tenant-fees. For more detailed information read our applicant guide at savills.co.uk/applicant-guide. Hard copy available on request. . 20200226BARA

