



An exceptional three bedroom mansion flat located in the heart of Bedford Park on Woodstock Road, with bespoke high quality finishes.

Sydney House, Woodstock Road, Chiswick, London, W4

£3,466.67 pcm plus fees apply, Furnished
Available from 30.06.2020



118 sq m (1,270 sq ft) • Under floor heating (bathrooms) • Integrated speakers (reception room) • Bespoke design • Communal Gardens • Residents Parking

Local Information

Situated in the heart of Bedford Park on Woodstock Road, the property is ideally placed for the excellent shops, boutiques on Turnham Green Terrace and very close by to Chiswick High Road. Turnham Green underground Station (District & Piccadilly lines) is within a very short walk, as is the 94 bus route. This location offers easy access to central London via the A4, and via the M4 for Heathrow Airport and the west of England.

About this property

An exceptional three bedroom mansion flat in Bedford Park with bespoke design finishes Integrating high quality finishes and all the modern features expected in a refurbishment of this calibre.

The standard of the finish reflects uncompromising quality creating an exceptional lifestyle in this sought after area of prime Bedford Park.

There is wonderful entertaining space provided by a spacious reception room which boasts integrated speakers and cleverly designed sliding doors opening onto the open-plan kitchen / dining room. The bespoke Roundhouse designed kitchen is fitted with granite worktops, and Neff appliances.

There are three good size bedrooms, one of which has an en suite shower room and all have large windows ensuring plenty of natural light and built in storage. The highly specified bathrooms have been finished entirely with marble and offer under floor heating. There is also a hidden storage cupboard in the hallway ideal for storing coats and shoes.

From the outset of the design process this property has been created to work in harmony with the fabric of this Victorian mansion block, integrating high quality finishes and all the modern features expected in a refurbishment of this calibre.

Furnishing

Furnished

Local Authority

Ealing
Council Tax Band = F

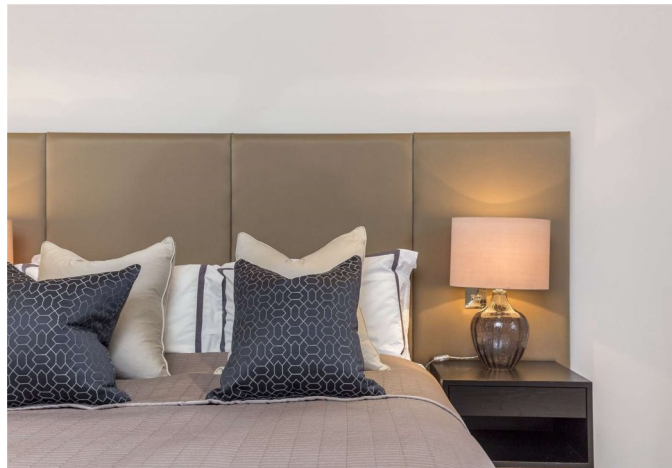
Energy Performance

EPC Rating = D

Viewing

All viewings will be accompanied and are strictly by prior arrangement through Savills Chiswick Lettings Office.
Telephone: +44 (0) 20 8987 5566.





Sydney House, Woodstock Road, Chiswick, London, W4
Gross Internal Area 1270 sq ft, 118 m²

David Warren
Chiswick Lettings
+44 (0) 20 8987 5566
dwarren@savills.com

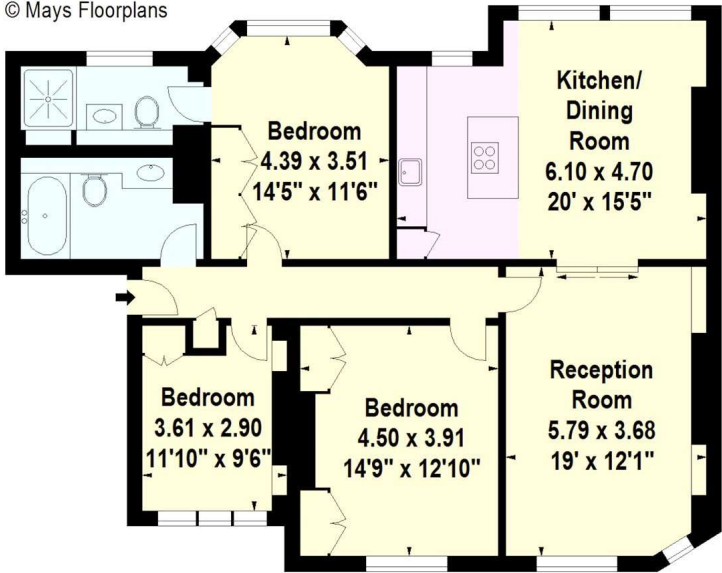


Sydney House,
Woodstock Road, W4

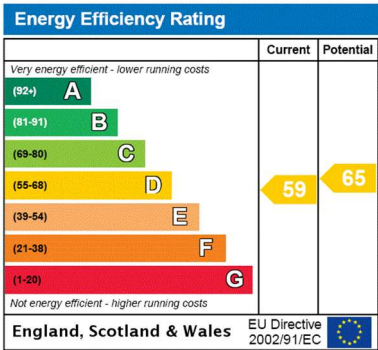


Gross internal area (approx)
118 sq.m (1270 sq.ft)

For Identification Only. Not To Scale.
© Mays Floorplans



Third Floor



Important notice Savills, their clients and any joint agents give notice that: 1. They are not authorised to make or give any representations or warranties in relation to the property either here or elsewhere, either on their own behalf or on behalf of their client or otherwise. They assume no responsibility for any statement that may be made in these particulars. These particulars do not form part of any offer or contract and must not be relied upon as statements or representations of fact. 2. Any areas, measurements or distances are approximate. The text, images and plans are for guidance only and are not necessarily comprehensive. It should not be assumed that the property has all necessary planning, building regulation or other consents and Savills have not tested any services, equipment or facilities. Prospective tenants must satisfy themselves by inspection or otherwise. Please note that the local area may be affected by aircraft noise, you should make your own enquiries regarding any noise within the area before you make any offer.

*There are different rules and fees for different tenancy types. For details of our fees and charges to go to Savills.co.uk/tenant-fees. For more detailed information read our applicant guide at savills.co.uk/applicant-guide. Hard copy available on request. . 20200325BARA

