



A stunning split level corner penthouse in Chiswick Green Studios

Chiswick Green Studios, 1 Evershed Walk, Chiswick, London, W4

£3,500 pcm plus fees apply, Part Furnished
Available from 06.01.2020



Private balcony • Open plan accommodation • Underground parking • Fantastic views • Lift within the building • Concierge • Gym within the development • Photos were taken more than 1 year ago

Local Information

Chiswick is a popular suburb located in West London. Whilst retaining a wonderful village charm, Chiswick is a vibrant area brimming with the activity and opportunity typical of London. Chiswick boasts a stunning range of property including elegant Georgian architecture, renowned Norman Shaw designed Bedford Park houses to quaint cottages in the Glebe Estate. Chiswick High Road offers a fantastic range of bars, restaurants, several supermarkets furthermore an ever-expanding range of delis and boutiques mean that Chiswick residents rarely need to go elsewhere.

About this property

A cleverly designed, split level penthouse apartment set within the iconic Chiswick Green Studios development. This corner property is located on the top floor and boasts unobstructed views and an impressive amount of natural light. On entering the property you are welcomed by a wide hallway that leads through to a bright reception room with floor to ceiling windows and French doors out onto a private balcony. The kitchen is on the mezzanine level next to a neat snug area as well as space perfect for a study.

There is also a lovely master bedroom with generous walk in wardrobe and bathroom, a second double bedroom and main bathroom. The property also benefits from underground parking, porter, and residents gym. *photos were taken more than a year ago*

Furnishing

Part Furnished

Local Authority

Ealing

Energy Performance

EPC Rating = C

Viewing

All viewings will be accompanied and are strictly by prior arrangement through Savills Chiswick Lettings Office. Telephone: +44 (0) 20 8987 5566.





Chiswick Green Studios, 1 Evershed Walk, Chiswick, London, W4
Gross Internal Area 1552 sq ft, 144.2 m²

Rachel Watts
Chiswick Lettings
+44 (0) 20 8987 5566
rachel.watts@savills.com

 |  savills | savills.co.uk

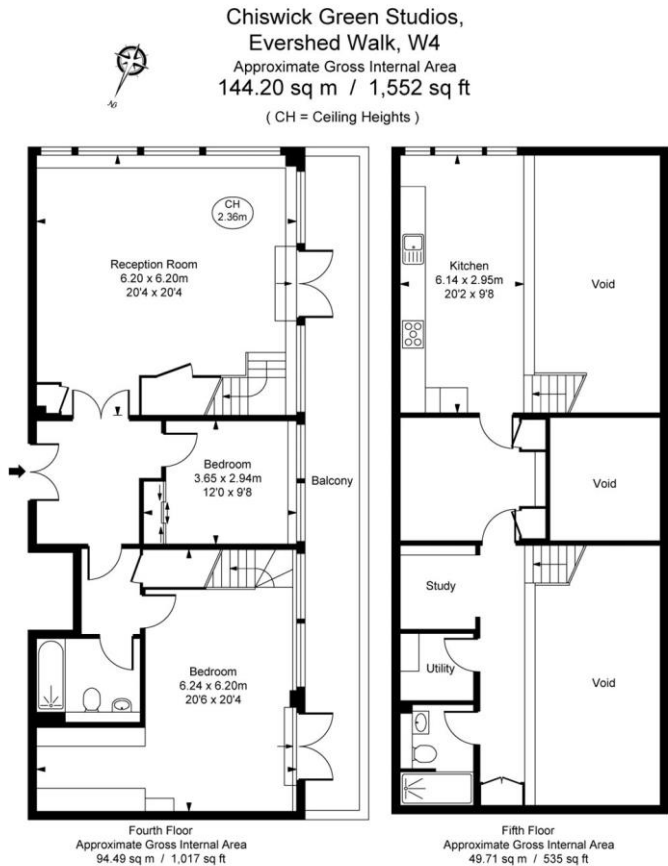
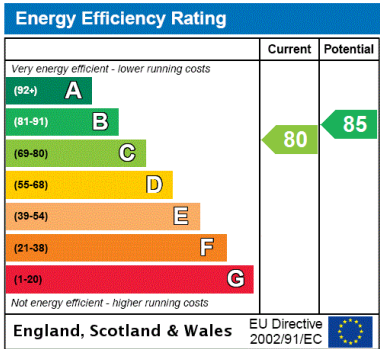


ILLUSTRATION FOR IDENTIFICATION PURPOSES ONLY
ALL MEASUREMENTS ARE MAXIMUM AND INCLUDE WINDOW BAYS AND WARDROBES WHERE APPLICABLE
THIS PLAN MUST NOT BE REPRODUCED BY ANY OTHER PERSON WITHOUT PERMISSION



Important notice Savills, their clients and any joint agents give notice that: 1. They are not authorised to make or give any representations or warranties in relation to the property either here or elsewhere, either on their own behalf or on behalf of their client or otherwise. They assume no responsibility for any statement that may be made in these particulars. These particulars do not form part of any offer or contract and must not be relied upon as statements or representations of fact. 2. Any areas, measurements or distances are approximate. The text, images and plans are for guidance only and are not necessarily comprehensive. It should not be assumed that the property has all necessary planning, building regulation or other consents and Savills have not tested any services, equipment or facilities. Prospective tenants must satisfy themselves by inspection or otherwise. Please note that the local area may be affected by aircraft noise, you should make your own enquiries regarding any noise within the area before you make any offer.

*There are different rules and fees for different tenancy types. For details of our fees and charges to go to Savills.co.uk/tenant-fees. For more detailed information read our applicant guide at savills.co.uk/applicant-guide.
Hard copy available on request. . 20191101BARA

