



ST PETERS PLACE, W6 : Superb apartment in the prestigious development St Peters Place

**26 Entwistle Terrace, St. Peters Square, Hammersmith, London, W6**

£2,250 pcm, Furnished, Part Furnished, Unfurnished  
Available from 25.10.2019



2 bedrooms • reception room • 2 bathrooms (1 en suite) • roof terrace • private balcony • secure underground parking • communal gardens

### Local Information

An executive apartment to rent in St Peters Place, an exclusive Crest Nicholson development on one of West London's most prestigious garden squares.

The development is located at the entrance to St Peters Square which was laid out during the economic boom of the 1820's, surrounding a Grade II listed public garden. Pevsner's famous Architectural Guides reference the area, noting: "The square has the flavour of a suburban Belgravia", yet it offers greater space and lower prices than in Prime Central London.

In keeping with the area's history, the interiors of the apartments have been designed to capture traditional and classic Georgian elegance, with all details finished to the highest specification. The tenants will be the first to live in these properties.

### About this property

An elegant apartment in classic Georgian style with high ceilings, in a sought after location. The apartment is set within a brand new and exclusive development overlooking St. Peters Square in Hammersmith. The apartment comprises 2 bedrooms, 2 bathrooms (one en suite), open plan kitchen/living room and a balcony. The kitchen is beautifully finished with contemporary,

handleless, gloss finish units and composite stone worktops.

Appliances will include an electric oven, microwave, induction hob, integrated extractor, dishwasher, fridge and freezer. The bathrooms are well appointed, with Villeroy & Boch fixtures and fittings. There is underfloor heating throughout. The property also benefits from having secure underground parking in a communal garage with lift access and bike storage. Preferably to be let on an unfurnished basis.

### Furnishing

Furnished, Part Furnished, Unfurnished

### Local Authority

Hammersmith and Fulham  
London Borough Council, Town Hall

### Energy Performance

EPC Rating = B

### Viewing

All viewings will be accompanied and are strictly by prior arrangement through Savills Chiswick Lettings Office.  
Telephone: +44 (0) 20 8987 5566.







26 Entwistle Terrace, St. Peters Square, Hammersmith, London, W6  
Gross Internal Area 676 sq ft, 62.8 m<sup>2</sup>

Rachel Watts  
Chiswick Lettings  
+44 (0) 20 8987 5566  
rachel.watts@savills.com



Entwistle Terrace, St Peters Square, W6  
Approximate Gross Internal Area  
62.82 sq m / 676 sq ft

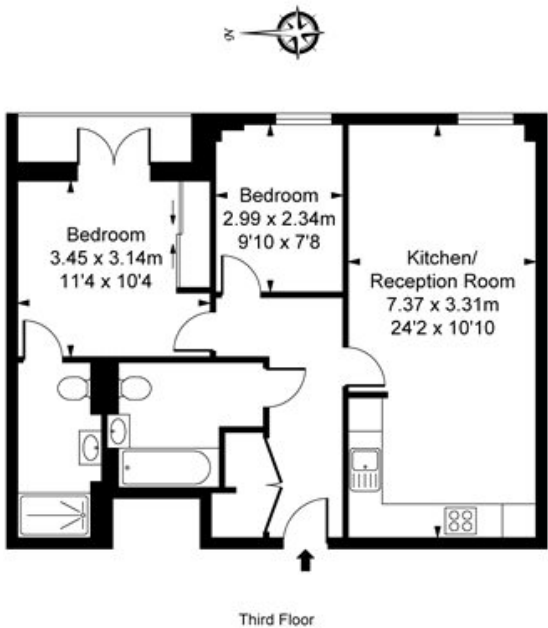
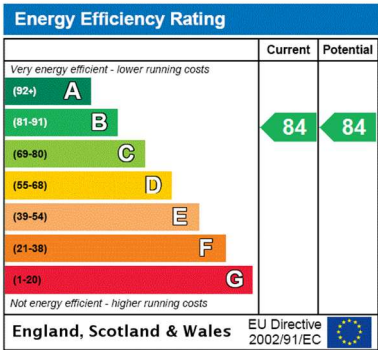


ILLUSTRATION FOR IDENTIFICATION PURPOSES ONLY  
ALL MEASUREMENTS ARE MAXIMUM, AND INCLUDE WINDOW BAYS AND WARDROBES WHERE APPLICABLE  
THIS PLAN MUST NOT BE REPRODUCED BY ANY OTHER PERSON WITHOUT PERMISSION



**Important notice** Savills, their clients and any joint agents give notice that: 1. They are not authorised to make or give any representations or warranties in relation to the property either here or elsewhere, either on their own behalf or on behalf of their client or otherwise. They assume no responsibility for any statement that may be made in these particulars. These particulars do not form part of any offer or contract and must not be relied upon as statements or representations of fact. 2. Any areas, measurements or distances are approximate. The text, images and plans are for guidance only and are not necessarily comprehensive. It should not be assumed that the property has all necessary planning, building regulation or other consents and Savills have not tested any services, equipment or facilities. Prospective tenants must satisfy themselves by inspection or otherwise. Please note that the local area may be affected by aircraft noise, you should make your own enquiries regarding any noise within the area before you make any offer.

\*There are different rules and fees for different tenancy types. For details of our fees and charges to go to Savills.co.uk/tenant-fees. For more detailed information read our applicant guide at savills.co.uk/applicant-guide. Hard copy available on request. . 20190906BARA

