



5 BEDROOM DETACHED LUXURY HOME WITH SPECTACULAR RIVER VIEWS

LEE MOUNT, LOVERS WALK, CORK CITY T23 XAH6

BER C2





Lee Mount

For Sale by Private Treaty

CKK170459

- Magnificent 5 bed detached luxury home with spectacular river views
- Approx. 575 sq m / 6,200 sq ft
- Additional space in converted attic approx. 92 sq m / 1,000 sq ft
- Situated on approx. 0.8 acres / 0.52 hectares mature and private grounds
- Exceptional high quality finish throughout
- Three car garage with electric roller shutter doors
- Spectacular views overlooking the River Lee and Pairc Ui Chaoimh Stadium
- Audio visual system/ Gas fired under floor central heating on both floors/Mains services
- Located within 5 mins drive of Cork city centre and the Jack Lynch tunnel

DESCRIPTION

Savills is delighted to present Lee Mount, Lovers Walk, Cork city, a luxurious 5 bedroom property which has fantastic views of the River Lee and is situated on a mature, private, south facing site, which is less than five minutes drive from Cork city centre.

Refurbished and extended in recent years, this property combines state of the art building technologies and old world the design being reminiscent of the Georgian era.

Upon entering through the high pillared gates you will find a vast red brick paved driveway lined with external lighting extending to the main house. You are surround by mature trees and lawn.

The main entrance hall is grand with a beautiful butterfly solid mahogany staircase going to the first floor. Just to the right of the main hall is the living room which doubles as a home cinema and also has an impressive marble fireplace as its focal point.

The kitchen and dining area, located in the south wing, is spacious and has a wonderful SieMatic kitchen installed with a great selection of top end appliances. There is direct access to the suspended observation deck from the kitchen and both are facing south with calming river views. The dining area which is just off the kitchen has a very regal marble fireplace and again, is bright with beautiful views. Beside the kitchen is the utility/pantry room which has plenty of storage and shelving.

Going beyond these rooms you enter the secondary hallway which also has another solid mahogany stairwell to the first floor. From here you can also access the sitting room and garden room. This large south facing room has an array over sash windows that allow natural light to fill the space. In addition there is dual access to the observation deck which runs along the south boundary wall of the house.

On the first floor you have the master bedroom which is south west facing and is serviced by an en suite and a superb walk in wardrobe.

There are four other bedrooms, two of which have their own en suite. All bedrooms are double rooms and very spacious, with marble tiled floor and are finished to the highest of standards.

The property has a selection of technologies that are integrated into the house, including a high end lighting and audio/visual infrastructure.

Lee Mount is a superb property located on generous site within a close proximity to all social and necessary amenities. Cork city, the link road network and Cork International Airport are located within close proximity.

ACCOMMODATION

Ground Floor

Main Entrance Hallway

Beautiful entrance door with a fan light and sash window on either side, beautiful marble tiled flooring, centre chandelier, detailed corniced ceiling, recess lighting, down lights on wall, double mahogany doors to main living, elegant sweeping solid mahogany butterfly staircase, large stained glass window that allows westerly light, ample power points, intercom phone for main gate and under stairs storage.

Living/Cinema Room

A spacious room with marble flooring, detailed corniced ceilings, beautiful ornate marble fireplace with integrated gas fire insert, recess lighting, blinds, cinema projector unit, retractable remote cinema screen, ample power points, down lighting on wall, climate control panels, TV points, lighting control panel, wired for sound.

Kitchen/Dining Area

Marble tiled flooring, coving to ceiling, SieMatic contemporary designed kitchen with marble worktops and a modern timber finish. There are a selection of Gaggenau & Liebherr appliances including a double fridge/freezer, coffee making machine, oven and grill, dishwasher and under counter illumination. In addition, there is a large island unit with an integrated ceramic hob. Recess lighting, sink, hidden Bowers & Wilkins speakers, door leading to observation deck, TV point, display cabinet for audio/video equipment and down lighting on wall.

The dining area is located just off the kitchen and has marble tiled flooring, beautiful ornate marble fireplace with integrated gas fire, double doors to sitting room.

Utility Room/Pantry

Contemporary design storage and shelving unit, marble tiled flooring, coving to ceiling, recess lighting, marble work top and sink. Integrated fridge/freezer.

Rear Hallway

Marble flooring, beautiful solid mahogany staircase to first floor, understairs storage area, ornate corning to ceiling, light control panel, down light on wall, access to service entrance to front of house.

Guest WC

WC. Whb. Marble flooring, wall mirror and recessed lighting.

First Floor

Main Landing

Landing above main entrance hall has marble flooring, cornicing to ceiling, hidden Bowers & Wilkins speakers, light control panel, down lighting on wall and recessed lighting.

Master Bedroom

Large south facing room with views of the River Lee and Pairc Ui Chaoimh Stadium, marble flooring, recess lighting and coving to ceiling.

Walk-in Wardrobe

Marble tiled flooring, two banks of shelving and storage space, large wall mirror and recessed lighting.

En suite

WC. WHB. Shower. Marble tiled flooring and wall tiles, towel radiator, recess lighting, coving to ceiling, hidden Bowers & Wilkins speakers.

Bedroom 2

Double bedroom with marble flooring, recess lighting, hidden Bowers & Wilkins speakers and coving to ceiling.

En Suite

WC. Whb. Shower. Marble tiled flooring and walls, bath with marble surround, recess lighting, coving to ceiling, hidden Bowers & Wilkins speakers, towel radiator.

Bedroom 3

Double room, Marble tiled flooring, recess lighting, hidden Bowers & Wilkins speakers, coving to ceiling and blinds.

Second Landing

Marble tiled flooring, recess lighting, ornate cornicing to ceiling, and down lights.

Bedroom 4

Double room with marble tiled flooring and recessed lighting, hidden Bowers & Wilkins speakers, blinds, coving to ceiling, built-in wardrobes and storage units.

En suite

WC. Whb. Shower. Marble tiled flooring, hidden Bowers & Wilkins speakers, wall mirror, recess lighting, coving to ceiling.

Main Bathroom

WC. Marble his and hers Whb. Marble tiled flooring, large wall mirror, large Jacuzzi unit, blinds, towel radiator, large shower area, coving to ceiling, hidden Bowers & Wilkins speakers and automated lighting.

Bedroom 5

Marble flooring, recess lighting, coving to ceiling, built-in wardrobes and blinds.

En suite

WC. Marble Whb. Marble tiled flooring and walls, towel radiator, shower, recess lighting, wall mirror, extractor fan, coving to ceiling, hidden Bowers & Wilkins speakers.

Gymnasium

Marble tiled floor, recess lighting, hidden Bowers & Wilkins speakers, wall mirror, coving to ceiling, and spiral staircase to attic room. Located off bedroom 2.

Attic Room

This is a large L- Shaped room that has carpet, velux windows, recess lighting, radiators and ample storage.

DETACHED THREE BAY GARAGE

Located near the main entrance gate there is a 28' x 18' garage which has enough room to house three cars, accessed by three electric roller shutter doors. In addition there are external lights, ample power points, water supply and heater.

Under the garage you will find two rain harvesting water storage tanks and an emergency power generator for the property.

PLANT ROOM

Situated under the main house is the plant room which houses two gas boilers, water storage tanks and high insulation domestic water tank powering the under flooring heating and the domestic water.

OUTSIDE

At the entrance of the house is a solid wood gate with wrought iron detailing secured to solid stone pillars and a separate pedestrian access gate. The property is bounded by a beautiful old stone wall that runs along Lovers Walk. The garden has a fantastic selection of mature trees and is laid out with lawns and patios. The southern side of the house has an elevated observation deck that runs the length of the house and is ideal for watching the ships go by.

Just inside the main gate is a spacious brick paved drive, passing the tree bay garage and extending to the front of the main house. In addition, the property has a great selection of external lighting around the property ensuring both privacy and security.

ADDITIONAL FEATURES

Concrete slab flooring between ground and first floor
Double glazed sashed windows throughout
Marble tiled flooring throughout
Original pillared entrance with electric gate
Beautiful south facing observation deck with timber and glass finish



DIRECTIONS

From Cork city travel along the Lower Glanmire road, crossing over the skew bridge before Tivoli and taking your next left for Lovers Walk. The property is located on the left hand side approx. 100 metres up the hill. See Sign.

BER DETAILS

BER No: C2
BER Number: 110234325
Energy Performance Indicator: 180.3kWh/m2/yr

VIEWING

By appointment with Savills Cork
(021) 427 1371 or email: cork@savills.ie



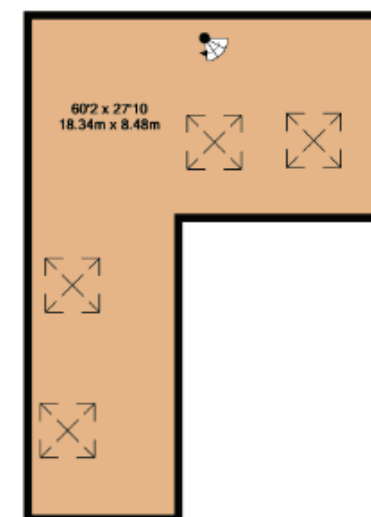


GROUND FLOOR



1ST FLOOR

We list every attempt has been made to ensure the accuracy of the floor plan contained here. Measurements of doors, windows, rooms and any other items are approximate and no responsibility is taken for any error, omission, or mis-statement. This plan is for illustrative purposes only and should be used as such by any prospective purchaser. The services, systems and appliances shown have not been tested and no guarantee as to their operability or efficiency can be given.
Made with Metropix 02/017



ATTIC FLOOR



Savills Cork
11 South Mall,
Cork.
cork@savills.ie
+353 (0)21 427 1371

Important Notice: Savills for themselves and for the vendors or lessors of this property whose agents they are, give notice that:- (i) The particulars are set out as a general outline for the guidance of intending purchasers or leasees, and do not constitute part of, an offer or contract. (ii) All descriptions, dimensions, references to condition and necessary permissions for use and occupation, and any other details are given in good faith and are believed to be correct, but any intending purchasers or tenants should not rely on them as statements or representations of fact but satisfy themselves by inspection or otherwise as to the correctness of each of them. (iii) No person in the employment of Savills Ltd. has any authority to make or give any representations or warranty whatever in relation to this property.

