



A very bright one bedroom flat close to the open green spaces of Tooting Bec Common, complete with off-street parking.

Adelina Mews, London, SW12

Guide Price £355,000 Leasehold (Lease Expiry June 2987)



A bright and spacious reception room • Well-presented bedroom • Communal garden • Off-street parking • In close proximity to the open green spaces of Clapham Common and Tooting Bec Common

Local Information

Transport links are close by with Balham and Clapham South underground stations (Northern Line), as well as services from Streatham overground station.

Local bus routes are excellent, and is in close proximity to the open green spaces of Clapham Common and Tooting Bec Common.

There is a good selection of schools.

About this property

Situated on the first floor is this charming one bedroom flat. Boasting a spacious open-plan living area and plenty of natural light throughout.

The bedroom has excellent built-in storage. Off the hallway is a spacious modern bathroom complete with a fitted bath and overhead rain shower.

The flat further benefits from a communal garden, one allocated off-street parking space and outside storage.

Tenure

Leasehold (Lease Expiry 2987)

Local Authority

Wandsworth

Council Tax

Band = D

Ground Rent

£75

Service Charge

£130 per month

Energy Performance

EPC Rating = D

Viewing

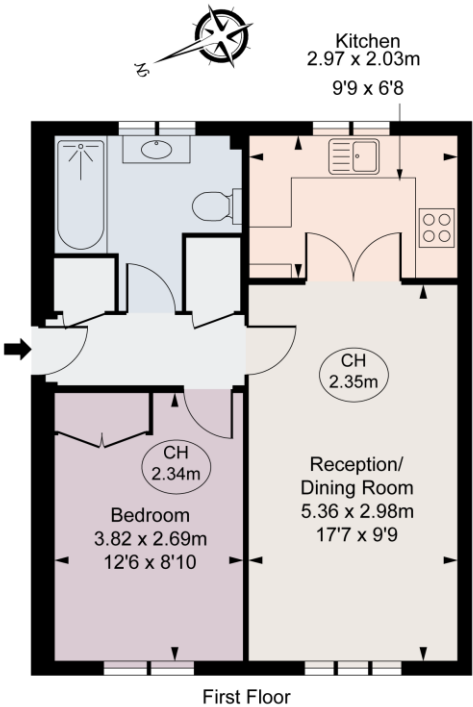
All viewings will be accompanied and are strictly by prior arrangement through Savills Clapham Office.

Telephone: +44 (0) 20 8673 4111.

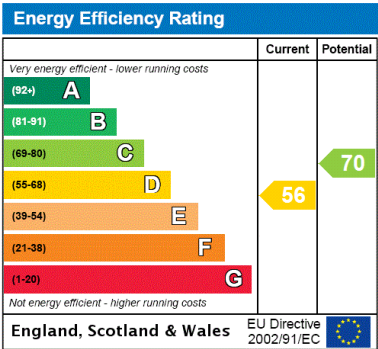




Adelina Mews, SW12
Approximate Gross Internal Area
43.06 sq m / 464 sq ft
(CH = Ceiling Heights)



This plan is not to scale. It is for guidance and not for valuation purposes.
All measurements and areas are approximate only, and have been prepared in accordance with the current edition of the RICS Code of Measuring Practice.
© Fulham Performance



Important Notice Savills, its clients and any joint agents give notice that 1: They are not authorised to make or give any representations or warranties in relation to the property either here or elsewhere, either on their own behalf or on behalf of their client or otherwise. They assume no responsibility for any statement that may be made in these particulars. These particulars do not form part of any offer or contract and must not be relied upon as statements or representations of fact. 2: Any areas, measurements or distances are approximate. The text, photographs and plans are for guidance only and are not necessarily comprehensive. It should not be assumed that the property has all necessary planning, building regulation or other consents and Savills have not tested any services, equipment or facilities. Purchasers must satisfy themselves by inspection or otherwise. 20220613ANTS

