



A stylish two bedroom flat in a modern development

St. Luke's Avenue London SW4

Leasehold



Open plan reception room/kitchen • 2 bedrooms • 2 bathrooms (en suite) • Terrace • Conceirge service • Lifts

Local information

St. Luke's Avenue is a highly sought after road, ideally situated for access to the fashionable shops, bars and restaurants that Clapham Old Town and Clapham High Street has to offer. The beautiful spaces of Clapham Common, provide over 200 acres of beautiful green open space including three ponds and various sporting amenities are also nearby.

For transport, Clapham Common and Clapham North Underground stations are a short walk away offering Northern Line services into the City and West end. Clapham High Street Overground Station is also nearby.

About this property

This stunning apartment is situated on the fifth floor of the award winning development, benefiting from an expansive roof terrace, providing exceptional views across London and beyond.

The apartment features a fantastic open plan reception room/kitchen complete with hard wood flooring and double doors opening out onto the terrace. The kitchen is contemporary and finished with Siemens appliances and a breakfast bar. To the front of the property are two good size double bedrooms, the master bathroom is en suite & completing the accommodation is a luxurious second (en suite) Jack & Jill bathroom both with Villeroy & Boch fixtures.

Tenure

Leasehold

Local Authority

London Borough of Lambeth

EPC rating = C

Viewing

Strictly by appointment with Savills





St. Luke's Avenue London SW4
Gross internal area (approx) 1,310 sq ft

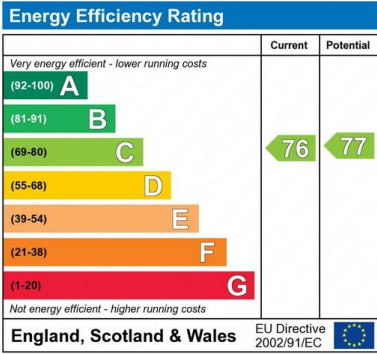
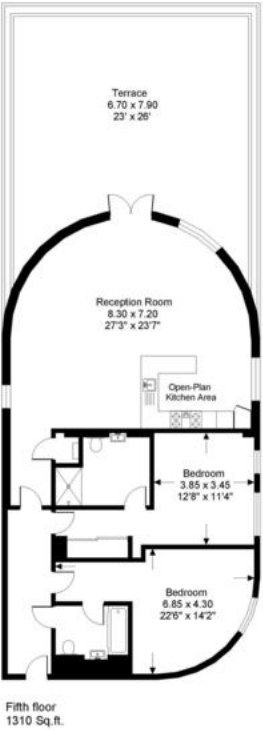


savills

savills.co.uk

Drew Zendra
Savills Northcote Road
020 3428 2222
dzendra@savills.com

St Luke's Avenue, SW4
Gross internal area (approx.):
121.7 sq.m. (1310 sq.ft.)
For identification purposes only. Not to scale.
Floorplanners ©



Important notice: Savills, their clients and any joint agents give notice that 1: They are not authorised to make or give any representations or warranties in relation to the property either here or elsewhere, either on their own behalf or on behalf of their client or otherwise. They assume no responsibility for any statement that may be made in these particulars. These particulars do not form part of any offer or contract and must not be relied upon as statements or representations of fact. 2: Any areas, measurements or distances are approximate. The text, photographs and plans are for guidance only and are not necessarily comprehensive. It should not be assumed that the property has all necessary planning, building regulation or other consents and Savills have not tested any services, equipment or facilities. Purchasers must satisfy themselves by inspection or otherwise. 91028051 Job ID: 135703 User initials: GAH

