



A spectacular, semi-detached, five bedroom family home in Furzedown.

Beclands Road, London, SW17
£875,000 Freehold





- **Beautifully presented five bedroom family home**
- **Off-street parking**
- **Light and spacious open-plan kitchen and reception room**
- **A private garden ideal for al fresco dining**
- **Close to the wonderful facilities on Tooting**
- **Transport connections are excellent with Tooting mainline station**

Local Information

Beclands Road is ideally situated close to the wonderful facilities in Tooting and within easy reach of several good schools, including Graveney and St. Leonards Primary School as well as Tooting Common.

Transport connections are excellent with Tooting mainline station providing services to London Bridge and Thames Link.

Local transport links include very good bus routes and a easy access to Streatham and Streatham Common Stations (National Rail) and Tooting Broadway Underground Station (Northern Line).

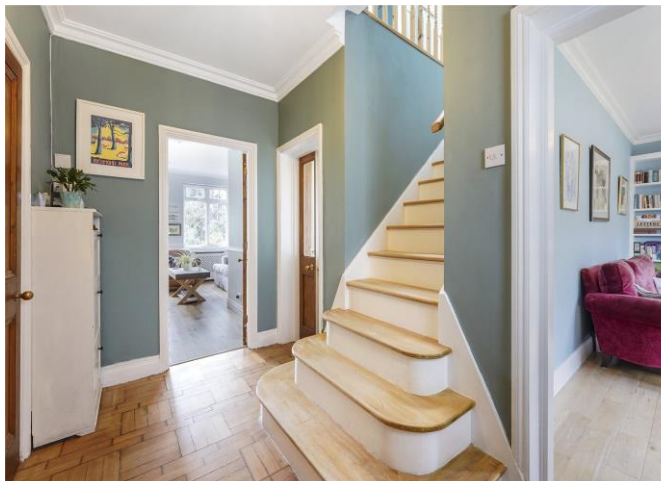
The property is close to the varied amenities on Moyser Road but also within easy reach of the amenities of Tooting and Streatham High Road and Commons.

Tenure: Freehold

Local Authority: Wandsworth

Energy Performance: EPC Rating = D

Viewing: Strictly by arrangement with Savills.



About this property

This delightful home has been nurtured by the same family for over 35 years. The cottage like exterior and off-street parking make this a brilliant family home.

Naturally spacious but also extended to the side and rear and totaling 1,470 sq ft. the property boasts two reception rooms and a large dine in kitchen. The rear of the house overlooks the large decked area which leads to a wide 60 ft. garden.

Upstairs, the primary bedroom is situated to the rear of the house and comprises fitted wardrobes and en suite shower room. Next to this is the family bathroom and four additional

bedrooms, three with built in wardrobes.

The ground floor also benefits from a separate cloakroom and utility space.





Beclands Road, SW17

Gross internal area (approx.):

136.6 sq.m. (1470 sq.ft.)

For identification purposes only. Not to scale.

Floorplanners ©



savills

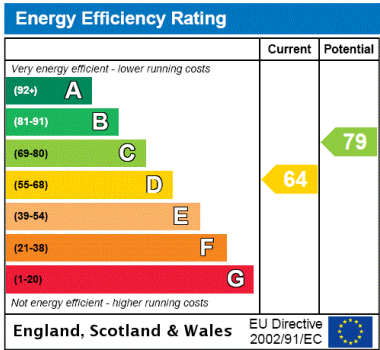
savills.co.uk

Marie Greenwood

Clapham

+44 (0) 20 8673 4111

marie.greenwood@savills.com



Important Notice Savills, its clients and any joint agents give notice that 1: They are not authorised to make or give any representations or warranties in relation to the property either here or elsewhere, either on their own behalf or on behalf of their client or otherwise. They assume no responsibility for any statement that may be made in these particulars. These particulars do not form part of any offer or contract and must not be relied upon as statements or representations of fact. 2: Any areas, measurements or distances are approximate. The text, photographs and plans are for guidance only and are not necessarily comprehensive. It should not be assumed that the property has all necessary planning, building regulation or other consents and Savills have not tested any services, equipment or facilities. Purchasers must satisfy themselves by inspection or otherwise. 20210609AINI

