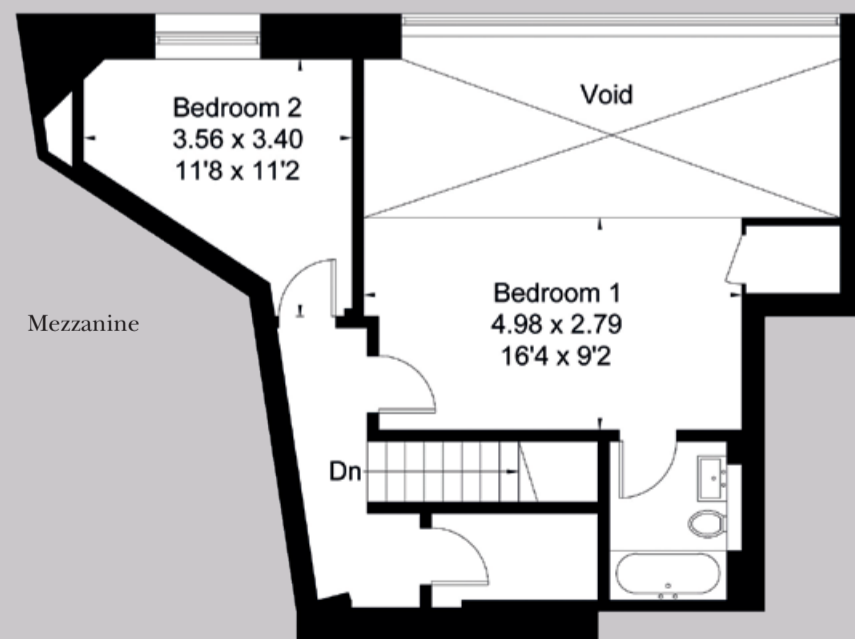
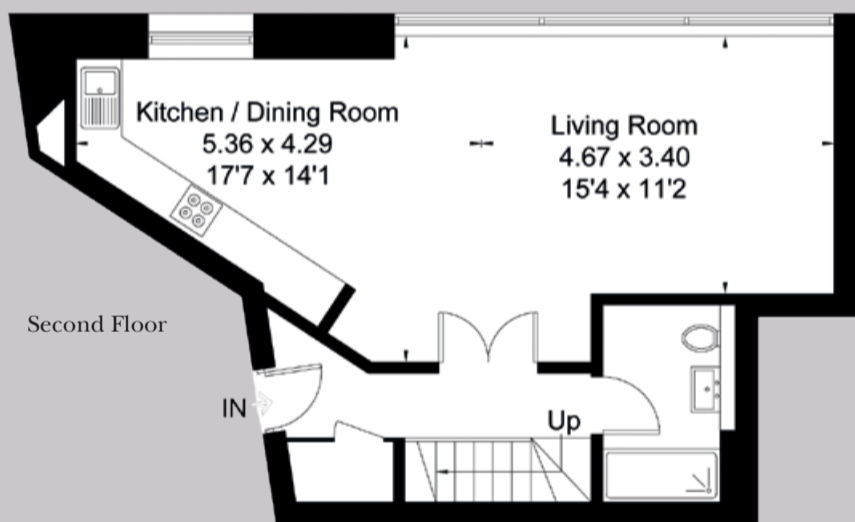




Apartment 61 The General

Guinea Street, Bristol, BS1 6SD



Apartment 61 The General

Gross Internal Area (approx) =
88.9 sq m / 957 sq ft
(Excluding Void)

For identification only. Not to scale.

Energy Efficiency Rating		Current	Potential
Very energy efficient - lower running costs			
(92 plus) A			
(81-91) B			
(69-80) C		74	74
(55-68) D			
(39-54) E			
(21-38) F			
(1-20) G			
Not energy efficient - higher running costs			

Important Notice: Savills, their clients and any joint agents give notice that: 1. They are not authorised to make or give any representations or warranties in relation to the property either here or elsewhere, either on their own behalf or on behalf of their client or otherwise. They assume no responsibility for any statement that may be made in these particulars. These particulars do not form part of any offer or contract and must not be relied upon as statements or representations of fact. 2. Any areas, measurements or distances are approximate. The text, photographs and plans are for guidance only and are not necessarily comprehensive. It should not be assumed that the property has all necessary planning, building regulation or other consents and Savills have not tested any services, equipment or facilities. Purchasers must satisfy themselves by inspection or otherwise. 18/08/13 KN

Savills Clifton
20 The Mall,
Clifton Village,
Bristol BS8 4DR
+44 (0) 117 933 5800
clifton@savills.com



Apartment 61 The General

Guinea Street, Bristol, BS1 6SD

Stunning two double bedroom mezzanine apartment situated in the prestigious development of The General located on the edge of the famous Bristol Floating Harbour.

- Secure allocated parking space
- Concierge
- Mezzanine apartment
- Waterfront
- Open plan and lateral living
- Lift access to all floors
- EPC Rating = C



Description

The General is home to a collection of 205 one to four bedroom new and converted apartments and houses. The character-filled homes, situated in the Grade II Listed buildings of the former Bristol General Hospital includes a converted chapel, triplex apartments with glazed upper floors and a penthouse apartment located in the unique octagonal tower, with views across the city to the Somerset countryside. This extensive mix of properties juxtaposes modern interior specifications with the character of a listed building, all set around a restored central courtyard.

An exclusive and partially gated community, The General provides the perfect city centre retreat; minutes from the bustling centre, yet far enough to offer an oasis and retreat when needed.

Situated on the second floor this two bedroom mezzanine apartment, once the old operating theatre of the former Bristol General Hospital

is spacious and bright and overlooks the restored fountain and courtyard gardens.

The entrance hall opens out on the lower floor of the apartment and has a storage cupboard and the second shower room with comprehensive white suite with a wall mounted WC, washbasin and shower.

Double doors open onto the large living/dining/kitchen space, complete with stunning oversized and double height windows with remote controlled blinds offering glorious south facing views. The contemporary kitchen has integrated appliances; a comprehensive range of wall and base units with laminated work surfaces and dining area. The living space is divided by a bespoke Neville Johnson bookcase and TV unit which allows you to create an office or snug area and a more formal reception space.

Both bedrooms are positioned on the upper floor with the master

bedroom overlooking the galleried living space below complete with dressing room and master bedroom with comprehensive white suite with a wall mounted WC and washbasin and bath with shower attachment over. The second bedroom has a built in wardrobe and dressing table or desk and benefits from a window overlooking the garden. The utility room is also on this level with space for a washing machine.

Situation

The General is located on Guinea Street off Redcliff Hill, in a beautiful waterfront location on the edge of the famous Bristol Floating Harbour. It is ideally located from Bristol city centre, 0.9 miles to Temple Meads Train Station and 3.4 miles to Cabot Circus. Right on your doorstep, on the pedestrianised Lower Guinea Street, you will find the trio of Sanchez Brothers restaurants; Michelin starred Casamia, Paco Tapas and Pi Shop Pizzeria.