



Bright 2 bedroom period property moments from Holborn Station

Kingsway, London, WC2B

£975,000 Share of freehold (985 years remaining)



2 Bedrooms • 2 Bathrooms • 1 Reception Room

Grade II listed • Lift access • 980+ year lease • High ceilings •
Two bathrooms • Close to Holborn/Covent Garden •
Convenient access for LSE

About this property

Bright two bedroom period property moments from Holborn Station.

Occupying the vast majority of the first floor in this beautiful period building, there are two well proportioned bedrooms and generous ceiling heights throughout giving a sense of space. The open plan lounge and kitchen has incredible natural light thanks to two sizable windows.

Local Information

Mulberry House is situated on Kingsway, approximately 210 yards from Holborn tube station and approximately 550 yards from Covent garden tube station.

Located to the rear of the block is Lincoln's Inn Fields, a large public space equipped with netball and tennis courts.

To the south end of Kingsway is the campus for the London School of Economics and Political Science (LSE).

Tenure

Leasehold (985 years remaining)

Local Authority

Camden = Band F

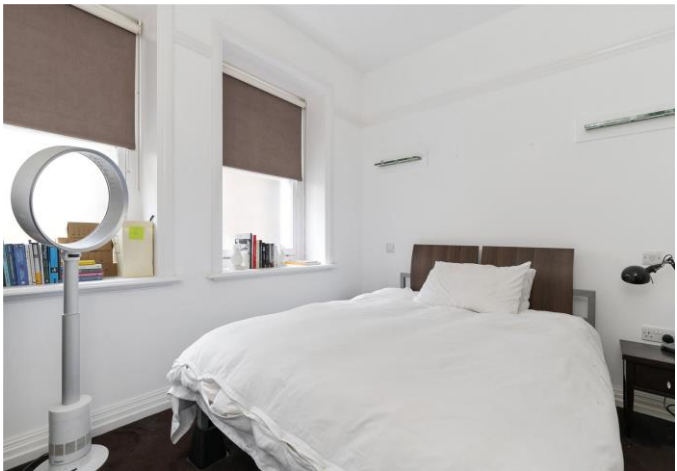
Energy Performance

EPC Rating = F

Viewing

All viewings will be accompanied and are strictly by prior arrangement through Savills Clerkenwell Office.
Telephone: +44 (0) 20 7253 2533.





Kingsway, London, WC2B
Gross Internal Area 685 sq ft, 63.6 m²



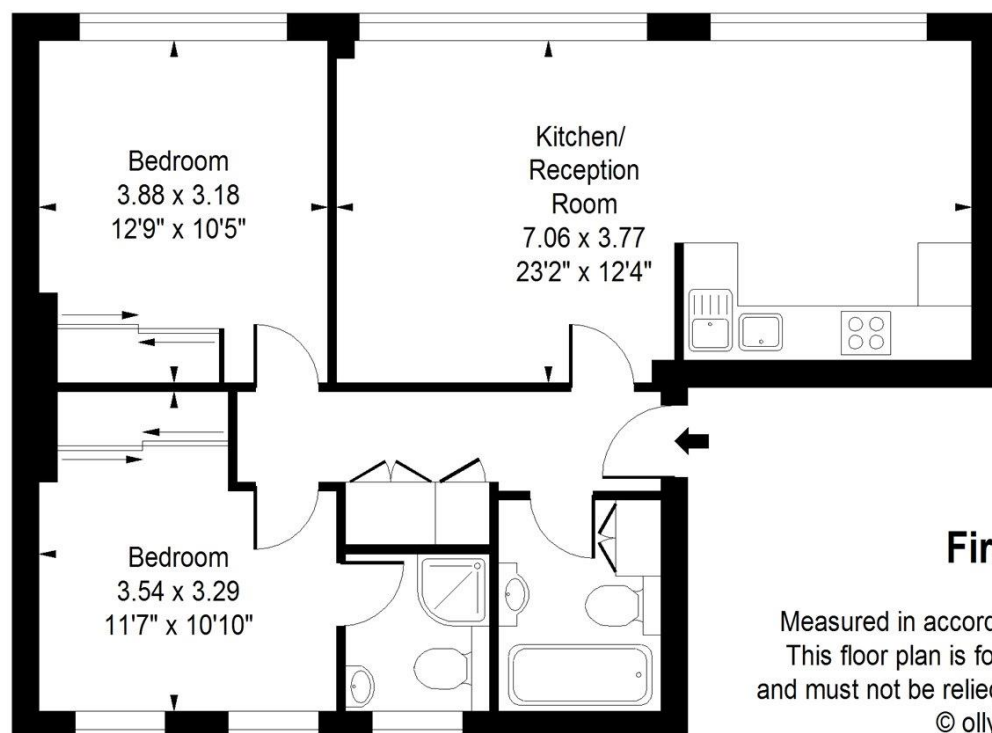
savills

savills.co.uk

Michael Smit
Clerkenwell
+44 (0) 20 7253 2533
nick.verdi@savills.com

Kingsway, WC2

Approximate Gross Internal Area = 685 sq ft / 63.64 sqm



First Floor

Measured in accordance with RICS guidelines.
This floor plan is for illustrative purposes only
and must not be relied upon as a statement of fact.
© ollyhewitt.co.uk

Energy Efficiency Rating		Current	Potential
Very energy efficient - lower running costs			
(92-)	A		
(81-91)	B		
(69-80)	C		
(55-68)	D		
(39-54)	E		
(21-38)	F	31	32
(1-20)	G		
Not energy efficient - higher running costs			
England, Scotland & Wales		EU Directive 2002/91/EC	

Important notice Savills, its clients and any joint agents give notice that 1: They are not authorised to make or give any representations or warranties in relation to the property either here or elsewhere, either on their own behalf or on behalf of their client or otherwise. They assume no responsibility for any statement that may be made in these particulars. These particulars do not form part of any offer or contract and must not be relied upon as statements or representations of fact. 2: Any areas, measurements or distances are approximate. The text, photographs and plans are for guidance only and are not necessarily comprehensive. It should not be assumed that the property has all necessary planning, building regulation or other consents and Savills have not tested any services, equipment or facilities. Purchasers must satisfy themselves by inspection or otherwise. 20200330GEVP

