



A rarely available two bedroom apartment

Little Britain, Clerkenwell, London, EC1A

£850,000 Leasehold



2 Bedroom • 1 Reception Room • 2 Bathrooms

Fourth floor apartment • Porter • Close to St Pauls •
Chain free • Two bathrooms • Ideal City Pied de
Terre

About this property

A rarely available two bedroom apartment in a popular
ported block close to St Pauls.

Offering approximately 742 square feet of lateral floor
space with two well proportioned bedrooms and two
bathrooms. The lounge is over seven meters in length and
there is a balcony which can be accessed from the mast
bedroom.

Local Information

Little Britain is a side turning off the one-way system which
connects St Pauls to London Wall and Barbican. St Pauls
tube station is approximately 250 yards away and Barbican
Tube station is approximately 420 yards (source
streetcheck.co.uk).

Tenure

Leasehold

Local Authority

City Of London

Energy Performance

EPC Rating = C

Viewing

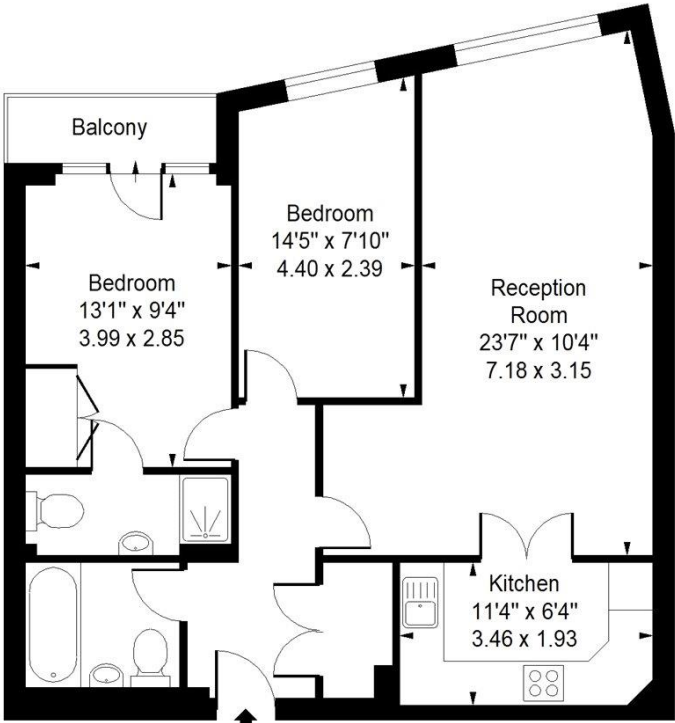
All viewings will be accompanied and are strictly by prior
arrangement through Savills Clerkenwell Office.
Telephone: +44 (0) 20 7253 2533.






Little Britain, Clerkenwell, London, EC1A
Gross Internal Area 742 sq ft, 68.9 m²

Little Britain, EC1A
Approximate Gross Internal Area = 742 sq ft / 68.93 sqm



Fourth Floor

Measured in accordance with RICS guidelines.
This floor plan is for illustrative purposes only
and must not be relied upon as a statement of fact.
© ollyhewitt.co.uk

Energy Efficiency Rating		
	Current	Potential
Very energy efficient - lower running costs		
(92+) A		
(81-91) B		
(69-80) C	79	79
(55-68) D		
(39-54) E		
(21-38) F		
(1-20) G		
Not energy efficient - higher running costs		
England, Scotland & Wales	EU Directive 2002/91/EC 	

Important notice Savills, its clients and any joint agents give notice that 1: They are not authorised to make or give any representations or warranties in relation to the property either here or elsewhere, either on their own behalf or on behalf of their client or otherwise. They assume no responsibility for any statement that may be made in these particulars. These particulars do not form part of any offer or contract and must not be relied upon as statements or representations of fact. 2: Any areas, measurements or distances are approximate. The text, photographs and plans are for guidance only and are not necessarily comprehensive. It should not be assumed that the property has all necessary planning, building regulation or other consents and Savills have not tested any services, equipment or facilities. Purchasers must satisfy themselves by inspection or otherwise. 20191025GEVP

