



A modern three bedroom apartment in Red Lion Square

Red Lion Square, Bloomsbury, London, WC1R

£1,500,000 Leasehold



3 Bedrooms • 3 Bathrooms • 1 Reception Room

Modern apartment • Three double bedrooms
• Double glazing throughout • Fifth floor • Lift

About this property

Located in Red Lion Square is this modern, three double bedroom, fifth floor apartment.

The accommodation comprises of: Three double bedrooms (two with en-suite bathrooms), a family bathroom, an eat-in kitchen and a spacious separate living room. Other benefits include: double glazing throughout, a lift and a secure entry phone.

Local Information

This apartment is conveniently located for easy access to Holborn, Covent Garden and Oxford Street.

Tenure

Leasehold

Local Authority

Camden

Energy Performance

EPC Rating = D

Viewing

All viewings will be accompanied and are strictly by prior arrangement through Savills Clerkenwell Office. Telephone: +44 (0) 20 7253 2533.



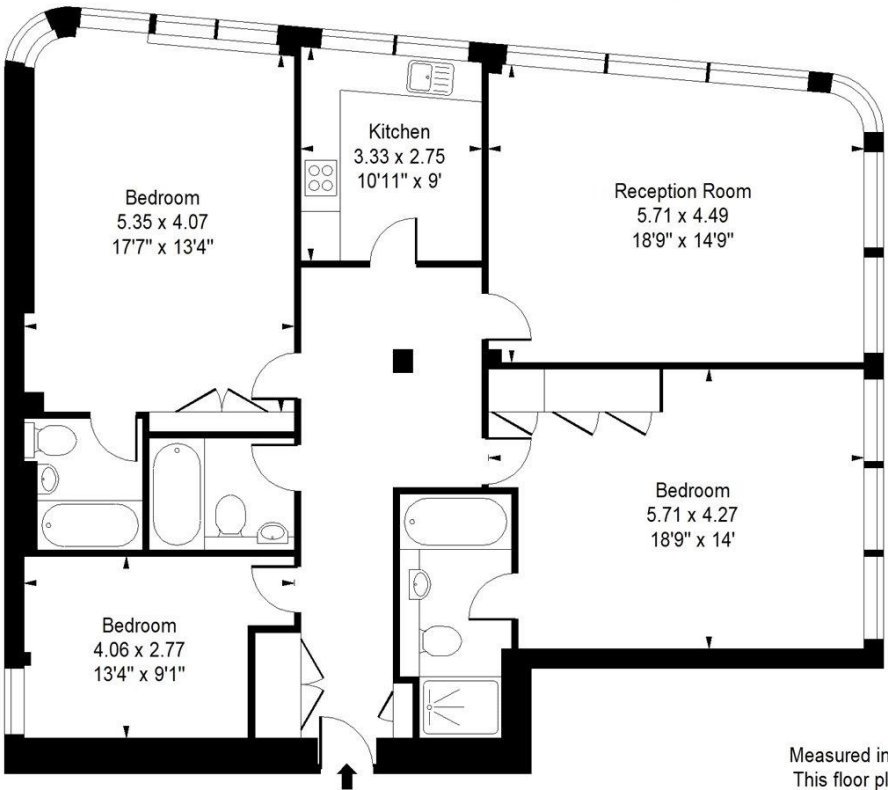


Red Lion Square, Bloomsbury, London, WC1R
Gross Internal Area 1325 sq ft, 123.09m²

 OnTheMarket.com |  savills | savills.co.uk

Nick Verdi
Clerkenwell
+44 (0) 20 7253 2533
nick.verdi@savills.com

Red Lion Square, WC1R
Approximate Gross Internal Area = 1325 sq ft / 123.09 sqm



Fifth Floor

Measured in accordance with RICS guidelines.
This floor plan is for illustrative purposes only
and must not be relied upon as a statement of fact.
© ollyhewitt.co.uk

| Energy Efficiency Rating | | |
|---|---------|-----------|
| | Current | Potential |
| Very energy efficient - lower running costs | | |
| (92+) A | | |
| (81-91) B | | |
| (69-80) C | | |
| (55-68) D | 64 | 64 |
| (39-54) E | | |
| (21-38) F | | |
| (1-20) G | | |
| Not energy efficient - higher running costs | | |
| England, Scotland & Wales | | |
| EU Directive 2002/91/EC | | |

Important notice Savills, its clients and any joint agents give notice that 1: They are not authorised to make or give any representations or warranties in relation to the property either here or elsewhere, either on their own behalf or on behalf of their client or otherwise. They assume no responsibility for any statement that may be made in these particulars. These particulars do not form part of any offer or contract and must not be relied upon as statements or representations of fact. 2: Any areas, measurements or distances are approximate. The text, photographs and plans are for guidance only and are not necessarily comprehensive. It should not be assumed that the property has all necessary planning, building regulation or other consents and Savills have not tested any services, equipment or facilities. Purchasers must satisfy themselves by inspection or otherwise. 20191025GEVP

