



# One bedroom apartment situated on the second floor

**Dominion House, 59 Bartholomew Close, Barbican, Farringdon, London, EC1A**

£480 pw (£2,080 pcm) plus fees apply, Furnished  
Available from 04.12.2020





- Recently new apartment
- 24 hour concierge
- Character façade
- Ideally located near Barbican station
- Lift

### Local Information

Barts Square is a short walk from the heart of the City. It sits on a long-established route between the Smithfield Conservation Area and St Paul's, linking London's historic heart with its financial centre. With the arrival of Farringdon Crossrail station in 2019 and planned regeneration around Smithfield Market, Barts Square is adding an exciting new chapter to one of London's oldest stories.

### About this property

This bright apartment in Dominion House features a double bedroom with built in wardrobes and a luxurious bathroom with contrasting marble finishes. Large floor to ceiling windows bath all principle rooms in natural light. The spacious layout features an open plan kitchen/reception room with a high specification fitted kitchen and engineered oak flooring throughout. The apartment is offered furnished including top of the range appliances and consolidated controls for heating, cooling and lighting.

Residents have exclusive use of a range of on-site facilities including but not limited to five star twenty-four hour concierge service, private meeting room, cinema with lounge bar, and a resident's lounge overlooking the communal garden.

### Furnishing

Furnished

### Local Authority

City Of London  
Council Tax Band = F

### Energy Performance

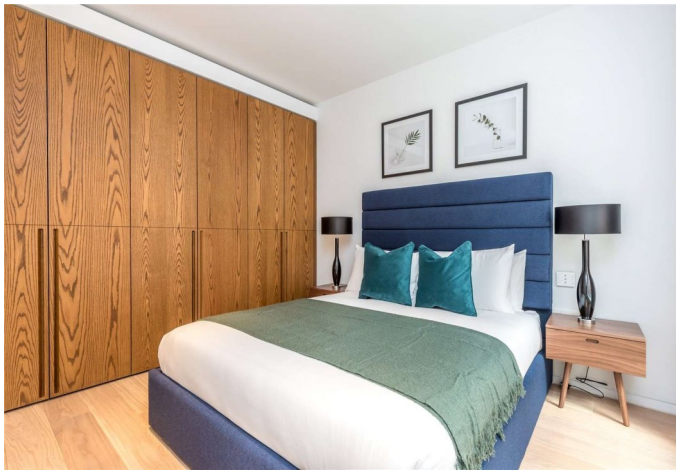
EPC Rating = B

### Viewing

All viewings will be accompanied and are strictly by prior arrangement through Savills Clerkenwell Lettings Office.  
Telephone: +44 (0) 20 7253 2533.







Dominion House, 59 Bartholomew Close, Barbican, Farringdon, London, EC1A  
Gross Internal Area 522 sq ft, 48.5 m<sup>2</sup>



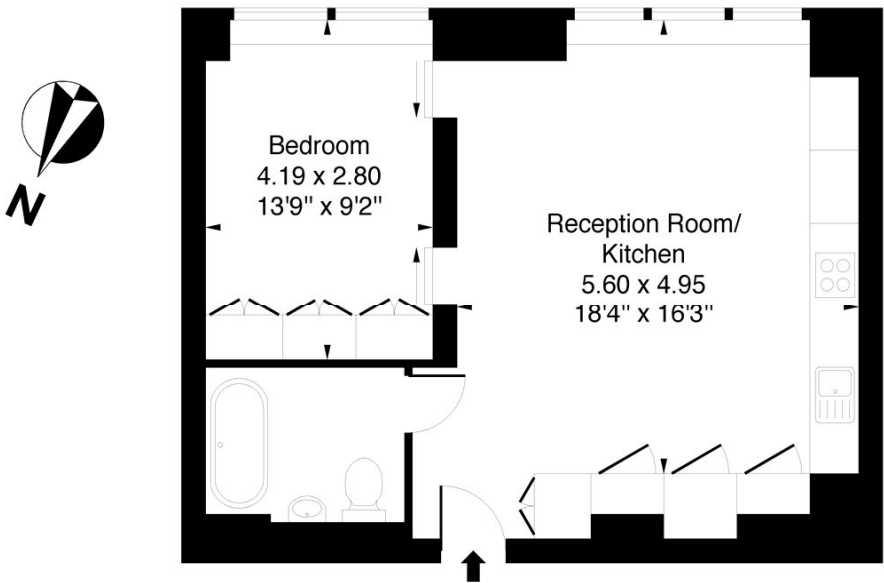
savills

savills.co.uk

**Anthony Casingena**  
Clerkenwell Lettings  
**+44 (0) 20 7253 2533**  
anthony.casingena@savills.com


## Dominion House, Bartholomew Close, EC1A

Approximate Gross Internal Area = 522 sq ft / 48.49 sqm



### Second Floor

Measured in accordance with RICS guidelines.  
This floor plan is for illustrative purposes only and is not to scale.  
Dotted lines indicate restricted head height unless marked otherwise.

Energy Efficiency Rating		Current	Potential
Very energy efficient - lower running costs			
(92+)	A		
(81-91)	B	85	85
(69-80)	C		
(55-68)	D		
(39-54)	E		
(21-38)	F		
(1-20)	G		
Not energy efficient - higher running costs			
England, Scotland & Wales		EU Directive 2002/91/EC	

**Important notice** Savills, their clients and any joint agents give notice that: 1. They are not authorised to make or give any representations or warranties in relation to the property either here or elsewhere, either on their own behalf or on behalf of their client or otherwise. They assume no responsibility for any statement that may be made in these particulars. These particulars do not form part of any offer or contract and must not be relied upon as statements or representations of fact. 2. Any areas, measurements or distances are approximate. The text, images and plans are for guidance only and are not necessarily comprehensive. It should not be assumed that the property has all necessary planning, building regulation or other consents and Savills have not tested any services, equipment or facilities. Prospective tenants must satisfy themselves by inspection or otherwise. Please note that the local area may be affected by aircraft noise, you should make your own enquiries regarding any noise within the area before you make any offer.

\*There are different rules and fees for different tenancy types. For details of our fees and charges please go to [Savills.co.uk/tenant-fees](https://www.savills.co.uk/tenant-fees). For more detailed information read our applicant guide at [savills.co.uk/applicant-guide](https://www.savills.co.uk/applicant-guide).  
Hard copy available on request. . 20201112CLO



arla | propertymark

PROTECTED