



# An exceptional 3 bedroom, 3 bathroom apartment

**Bartholomew Close, London, EC1A**

£975 pw (£4,225 pcm) plus fees apply, Furnished  
Available from 27.11.2021



- Bike storage
- 24 hour concierge
- Residents bar and lounge
- Recently new apartment
- Designer furniture

### Local Information

Located in the heart of the City on a quiet back street close to Smithfield market Barts Square is surrounded by a vibrant atmosphere of bars, eateries and shops. One New Change shopping center is close by and transport links include a selection of underground stations with the closest stations including Barbican, St Pauls and Farringdon.

### About this property

This bright apartment in Vicary House has large windows bathing all principle rooms in natural light. Measuring over 1,200 sqft, this spacious layout features an open plan reception room with a luxury fitted kitchen and engineered oak flooring. Further features include 3 double bedrooms with built in wardrobes and 3 luxurious bathrooms with contrasting marble finishes. The apartment is offered furnished to an exceptional standard and offers top of the range appliances and consolidated controls for heating, cooling and lighting.

Residents of Barts Square have exclusive use of a range of on-site facilities including but not limited to five star twenty four hour concierge service, private meeting room, cinema with lounge bar, and a resident's lounge overlooking the communal gardens.

### Furnishing

Furnished

### Local Authority

City Of London  
Council Tax Band = G

### Energy Performance

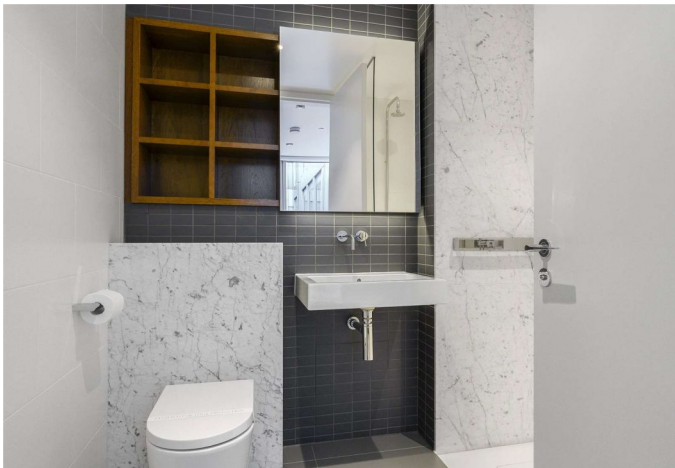
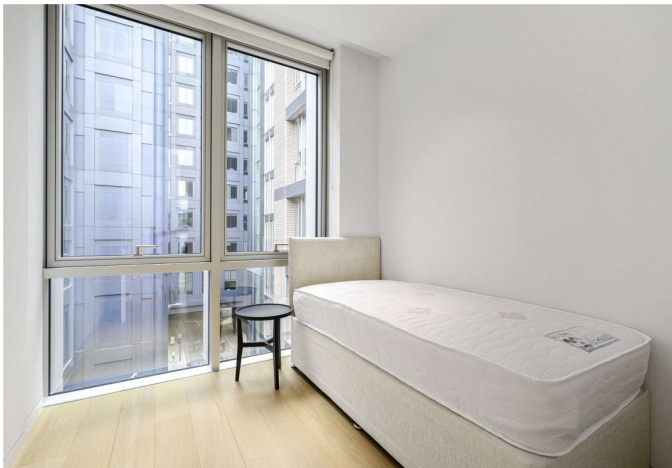
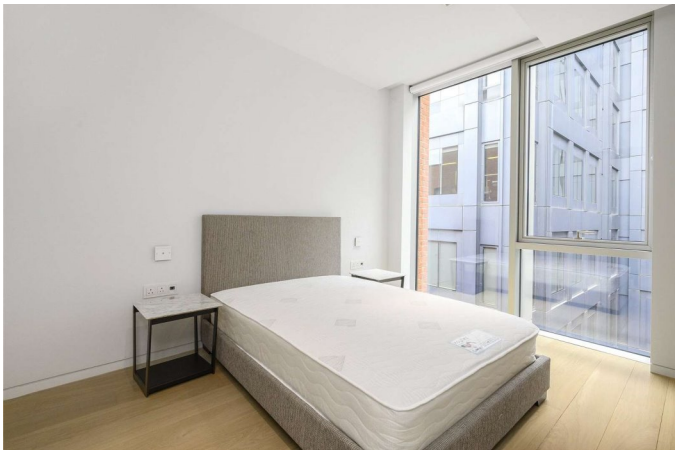
EPC Rating = B

### Viewing

All viewings will be accompanied and are strictly by prior arrangement through Savills Clerkenwell Lettings Office.  
Telephone: +44 (0) 20 7253 2533.







Bartholomew Close, London, EC1A  
Gross Internal Area 1267 sq ft, 117.7 m<sup>2</sup>



savills

savills.co.uk

**Hannah Reason**  
Clerkenwell Lettings  
**+44 (0) 20 7253 2533**  
hannah.reason@savills.com

**Vicary House**  
**Bartholomew Square, EC1V**

Approximate Gross Internal Area = 1267 sq ft / 117.71 sqm



Energy Efficiency Rating		
	Current	Potential
Very energy efficient - lower running costs		
(92+) <b>A</b>		
(81-91) <b>B</b>	86	86
(69-80) <b>C</b>		
(55-68) <b>D</b>		
(39-54) <b>E</b>		
(21-38) <b>F</b>		
(1-20) <b>G</b>		
Not energy efficient - higher running costs		
England, Scotland & Wales	EU Directive 2002/91/EC	

**Important notice** Savills, their clients and any joint agents give notice that: 1. They are not authorised to make or give any representations or warranties in relation to the property either here or elsewhere, either on their own behalf or on behalf of their client or otherwise. They assume no responsibility for any statement that may be made in these particulars. These particulars do not form part of any offer or contract and must not be relied upon as statements or representations of fact. 2. Any areas, measurements or distances are approximate. The text, images and plans are for guidance only and are not necessarily comprehensive. It should not be assumed that the property has all necessary planning, building regulation or other consents and Savills have not tested any services, equipment or facilities. Prospective tenants must satisfy themselves by inspection or otherwise. Please note that the local area may be affected by aircraft noise, you should make your own enquiries regarding any noise within the area before you make any offer.

\*There are different rules and fees for different tenancy types. For details of our fees and charges please go to [Savills.co.uk/tenant-fees](https://www.savills.co.uk/tenant-fees). For more detailed information read our applicant guide at [savills.co.uk/applicant-guide](https://www.savills.co.uk/applicant-guide). Hard copy available on request. . 20211004CLO

