



# Stunning 1 bedroom apartment

**Bartholomew Close, Barbican, Farringdon, London, EC1A**

£525 pw (£2,275 pcm) plus fees apply, Furnished  
Available from 04.07.2020





One bedroom • One bathroom • Reception • Cycle storage • Resident's lounge • 24 hour concierge • Great City location

### Local Information

Located in the heart of the City on a quiet back street close to the hustle and bustle of Smithfield market with its vibrant atmosphere with bars, eateries and shops. One New Change shopping centre is close by with a selections of underground stations with the closest stations being Farringdon, Barbican and St Pauls. Farringdon Close rail station will be minutes' walk from the development when it opens in early 2019.

### About this property

This contemporary 1 bedroom apartment is furnished and features an open plan living space, fitted kitchen with built-in appliances, wood flooring, large windows, built-in wood wardrobes and a bathroom with a large shower and tasteful additions of contrasting marble.

Its south west-facing aspect and high ceilings ensure the apartment feels bright and spacious.

Located at the southern edge of Barts Square, Vicary House sits in a prominent position on historic Bartholomew. The retail, restaurants and unrivalled connections of the City are close by.

### Furnishing

Furnished

### Local Authority

City Of London

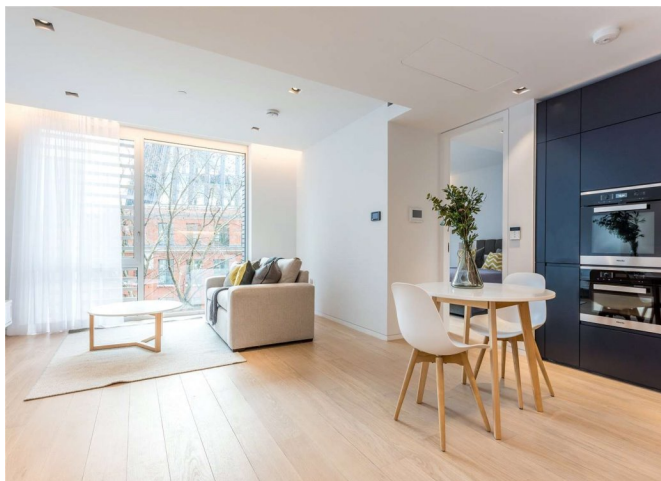
Council Tax Band = F

### Energy Performance

EPC Rating = B

### Viewing

All viewings will be accompanied and are strictly by prior arrangement through Savills Clerkenwell Lettings Office. Telephone: +44 (0) 20 7253 2533.







Bartholomew Close, Barbican, Farringdon, London, EC1A  
Gross Internal Area 548 sq ft, 50.9 m<sup>2</sup>



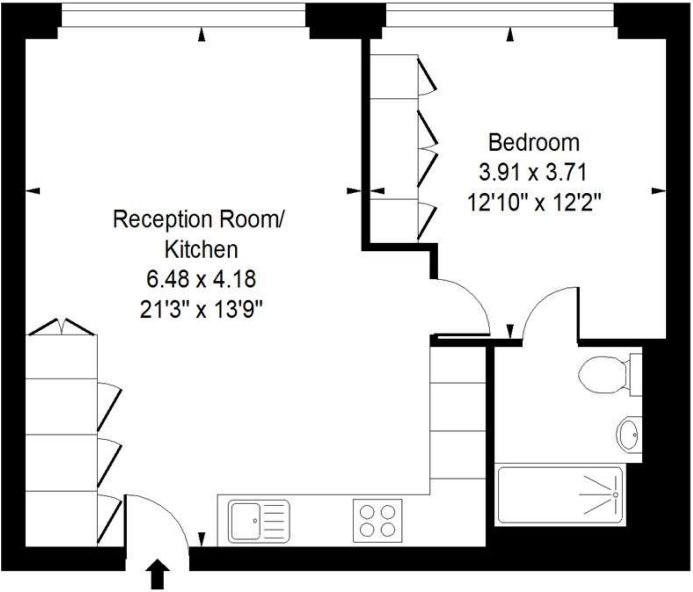
savills

savills.co.uk

Ezekiel Famurewa  
Clerkenwell Lettings  
**+44 (0) 20 7253 2533**  
ezeziel.famurewa@savills.com

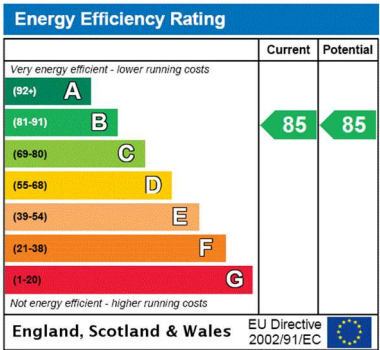
Vicary House,  
Bartholomew Close, EC1A

Approximate Gross Internal Area = 548 sq ft / 50.91 sqm



Fourth Floor

Measured in accordance with RICS guidelines.  
This floor plan is for illustrative purposes only and is not to scale.  
Dotted lines indicate restricted head height unless marked otherwise.



**Important notice** Savills, their clients and any joint agents give notice that: 1. They are not authorised to make or give any representations or warranties in relation to the property either here or elsewhere, either on their own behalf or on behalf of their client or otherwise. They assume no responsibility for any statement that may be made in these particulars. These particulars do not form part of any offer or contract and must not be relied upon as statements or representations of fact. 2. Any areas, measurements or distances are approximate. The text, images and plans are for guidance only and are not necessarily comprehensive. It should not be assumed that the property has all necessary planning, building regulation or other consents and Savills have not tested any services, equipment or facilities. Prospective tenants must satisfy themselves by inspection or otherwise. Please note that the local area may be affected by aircraft noise, you should make your own enquiries regarding any noise within the area before you make any offer.

\*There are different rules and fees for different tenancy types. For details of our fees and charges please go to Savills.co.uk/tenant-fees. For more detailed information read our applicant guide at savills.co.uk/applicant-guide.  
Hard copy available on request. . 20200521CLO

