



## Large one bedroom modern apartment close to the Barbican

**25 Goswell Road, Barbican, London, EC1M**

£385 pw (£1,668.33 pcm) plus fees apply, Furnished  
Available from 30.04.2021





- One bedroom
- Modern apartment
- Close to Barbican and City
- Furnished
- Third floor

#### Local Information

The development is positioned close to Charterhouse Square and Smithfield Market and is therefore ideal for anyone seeking a base close to the City.

#### About this property

Positioned on the third floor of a popular modern development in the heart of Clerkenwell and a short walk from the Barbican, is this spacious one bedroom apartment.

Arranged over approximately 550sq.ft, with an open-plan kitchen/reception, large double bedroom and contemporary bathroom - finished with Villeroy and Boch fittings. The apartment further benefits from underfloor heating.

The property is available late October on a furnished basis.

#### Furnishing

Furnished

#### Local Authority

Islington

Council Tax Band = E

#### Energy Performance

EPC Rating = B

#### Viewing

All viewings will be accompanied and are strictly by prior arrangement through Savills Clerkenwell Lettings Office. Telephone: +44 (0) 20 7253 2533.

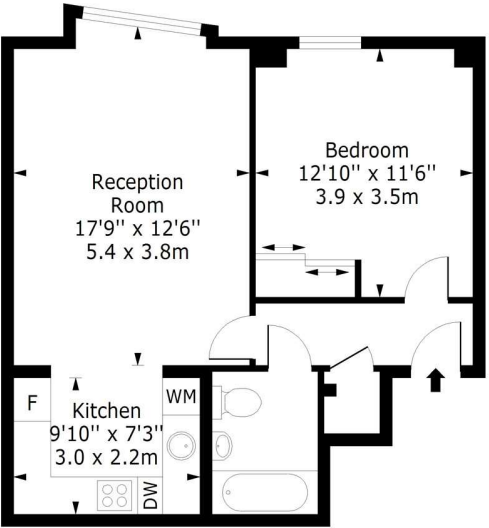






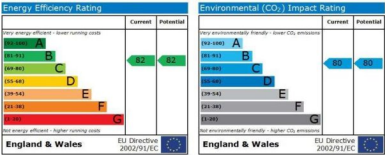
25 Goswell Road, Barbican, London, EC1M  
Gross Internal Area 553 sq ft, 51.4 m<sup>2</sup>

Goswell Road, EC1M  
Approx. Gross Internal Area 553 Sq Ft - 51.37 Sq M



Third Floor  
Floor Area 553 Sq Ft - 51.37 Sq M

For Illustration Purposes Only - Not To Scale  
[www.londonpropertyassessments.co.uk](http://www.londonpropertyassessments.co.uk)



**Important notice** Savills, their clients and any joint agents give notice that: 1. They are not authorised to make or give any representations or warranties in relation to the property either here or elsewhere, either on their own behalf or on behalf of their client or otherwise. They assume no responsibility for any statement that may be made in these particulars. These particulars do not form part of any offer or contract and must not be relied upon as statements or representations of fact. 2. Any areas, measurements or distances are approximate. The text, images and plans are for guidance only and are not necessarily comprehensive. It should not be assumed that the property has all necessary planning, building regulation or other consents and Savills have not tested any services, equipment or facilities. Prospective tenants must satisfy themselves by inspection or otherwise. Please note that the local area may be affected by aircraft noise, you should make your own enquiries regarding any noise within the area before you make any offer.

\*There are different rules and fees for different tenancy types. For details of our fees and charges please go to [Savills.co.uk/tenant-fees](http://Savills.co.uk/tenant-fees). For more detailed information read our applicant guide at [savills.co.uk/applicant-guide](http://savills.co.uk/applicant-guide). Hard copy available on request. . 20210224CLO

