



Spacious 2 bedroom apartment in Exmouth Market

Exmouth Market, Clerkenwell, London, EC1R

£555 pw (£2,405 pcm) plus fees apply, Furnished, Part Furnished, Unfurnished
Available from 21.10.2020



- 2 Double bedrooms
- Furnished or Unfurnished
- Central Location
- Exmouth Market
- Period conversion

Local Information

Exmouth Market is a vibrant hub of eateries and boutique outlets which provides easy access to Farringdon, Angel and King's Cross stations with the West End and City a short commute away.

About this property

Savills are proud to offer this spacious 2 bedroom apartment set on the bustling Exmouth Market.

Spread over the second floor, the apartment offers a bright and spacious living area and a huge double bedroom.

A further generously-sized double bedroom, separate kitchen and modern bathroom complete the property which spans over 700 sq. ft.

The property is available immediately with furnishing negotiable.

Furnishing

Furnished, Part Furnished, Unfurnished

Local Authority

Islington
Council Tax Band = D

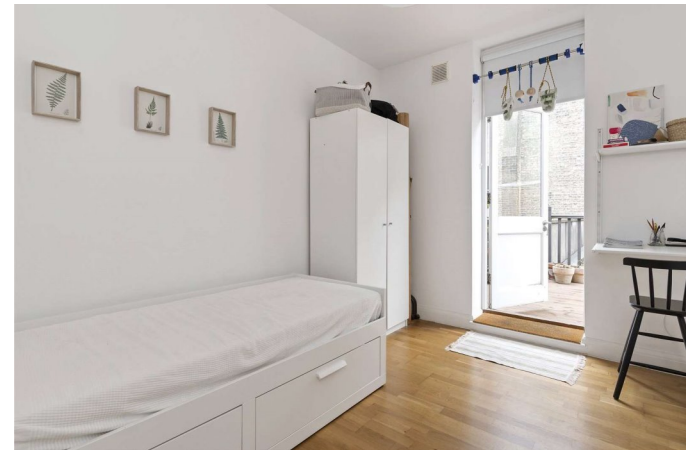
Energy Performance

EPC Rating = C

Viewing

All viewings will be accompanied and are strictly by prior arrangement through Savills Clerkenwell Lettings Office.
Telephone: +44 (0) 20 7253 2533.





Exmouth Market, Clerkenwell, London, EC1R
Gross Internal Area 720 sq ft, 66.9 m²

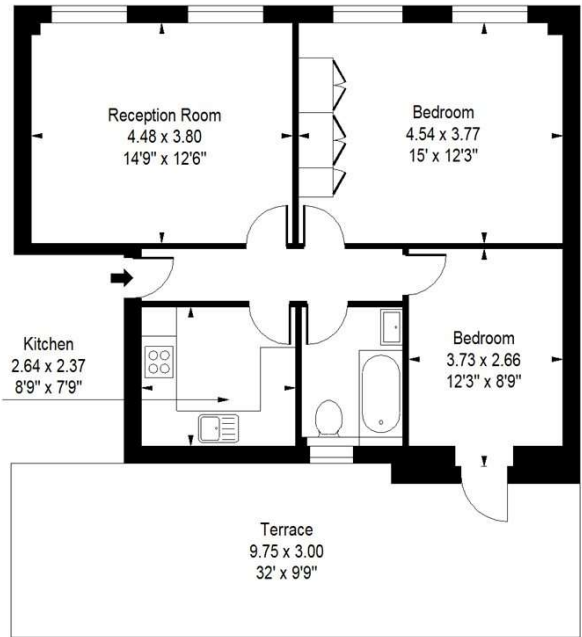


savills

savills.co.uk

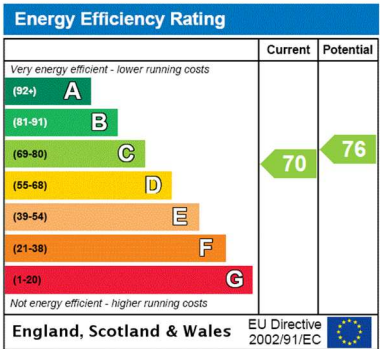
Anthony Casingena
Clerkenwell Lettings
+44 (0) 20 7253 2533
anthony.casingena@savills.com

Exmouth Market, EC1
Approximate Gross Internal Area = 651 sq ft / 60.48 sqm
Terrace Area = 315 sq ft / 29.26 sqm



First Floor

Measured in accordance with RICS guidelines.
This floor plan is for illustrative purposes only
and must not be relied upon as a statement of fact.
© ollyhewitt.co.uk



Important notice Savills, their clients and any joint agents give notice that: 1. They are not authorised to make or give any representations or warranties in relation to the property either here or elsewhere, either on their own behalf or on behalf of their client or otherwise. They assume no responsibility for any statement that may be made in these particulars. These particulars do not form part of any offer or contract and must not be relied upon as statements or representations of fact. 2. Any areas, measurements or distances are approximate. The text, images and plans are for guidance only and are not necessarily comprehensive. It should not be assumed that the property has all necessary planning, building regulation or other consents and Savills have not tested any services, equipment or facilities. Prospective tenants must satisfy themselves by inspection or otherwise. Please note that the local area may be affected by aircraft noise, you should make your own enquiries regarding any noise within the area before you make any offer.

*There are different rules and fees for different tenancy types. For details of our fees and charges please go to Savills.co.uk/tenant-fees. For more detailed information read our applicant guide at savills.co.uk/applicant-guide.
Hard copy available on request. . 20200924CLO

