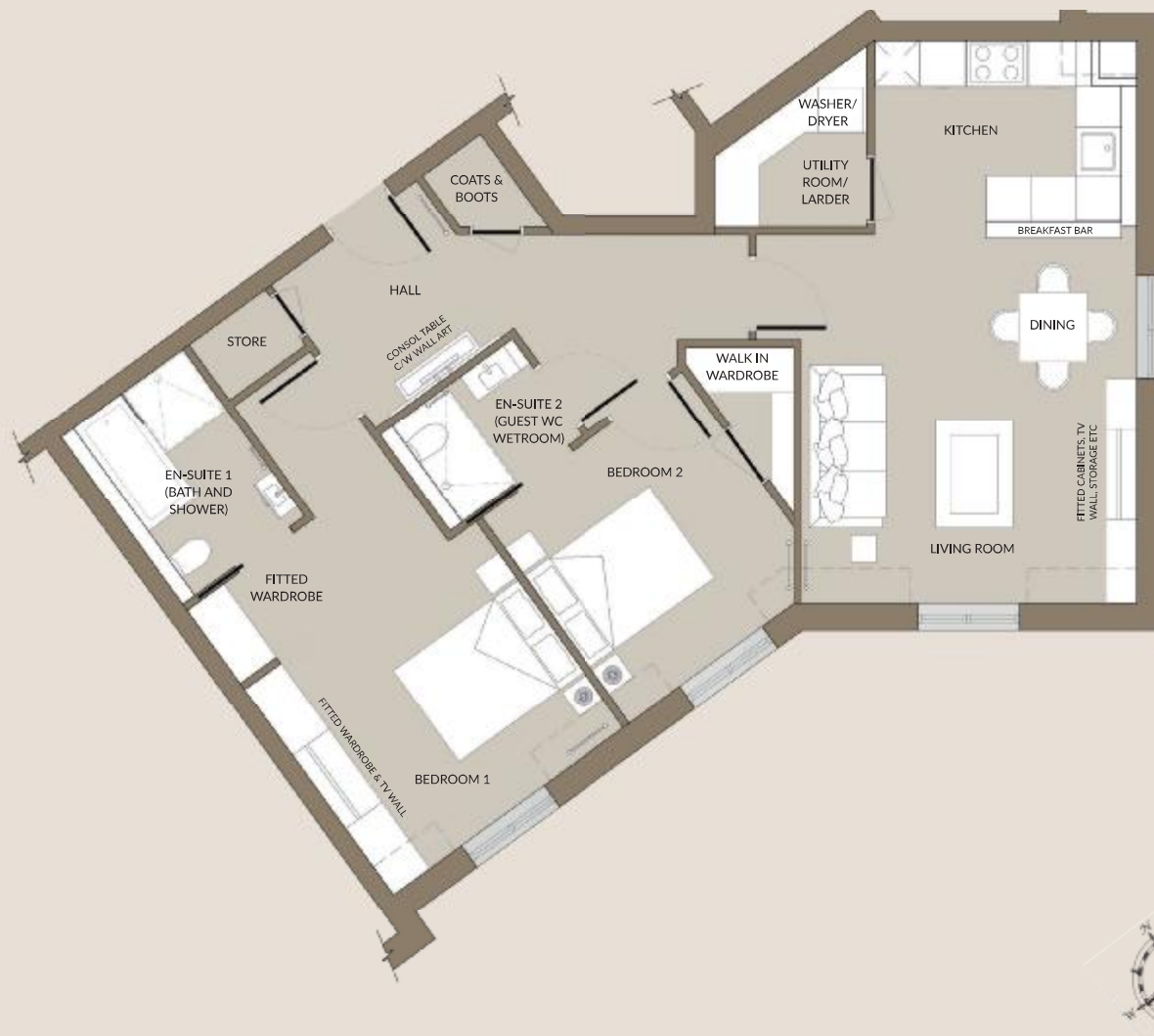


# Apartment 19

Bourton Lodge



## 2 BEDROOM SECOND FLOOR

GIA-88.3M<sup>2</sup> (950.45FT<sup>2</sup>)

### BEDROOM 1

3800 x 4200mm (12'5" x 13'9")

### EN-SUITE 1

2000 x 2750mm (6'6" x 9'0")

### BEDROOM 2

3300 x 2900mm (10'10" x 9'6")

### EN-SUITE 2

2150 x 1550mm (7'0" x 5'1")

### WALK-IN WARDROBE

1000 x 1500mm (3'3" x 4'11")

### LIVING ROOM

4450 x 4500mm (14'7" x 14'9")

### KITCHEN

3450 x 2450mm (11'3" x 8'0")

### UTILITY ROOM

1800 x 1800mm (5'10" x 5'10")

Please note that all floorplans and dimensions are taken from architectural drawings and are for guidance only - not to scale. Dimensions stated are within a tolerance of plus or minus 50mm. Overall dimensions are for reference only and should not be used for ordering carpets, furniture or similar. Please note that finishes, materials and measurements may alter slightly and are subject to change. Please ask your Sales Executive for specific details.

Telephone 01285 283 132

[auracareliving.com](http://auracareliving.com)