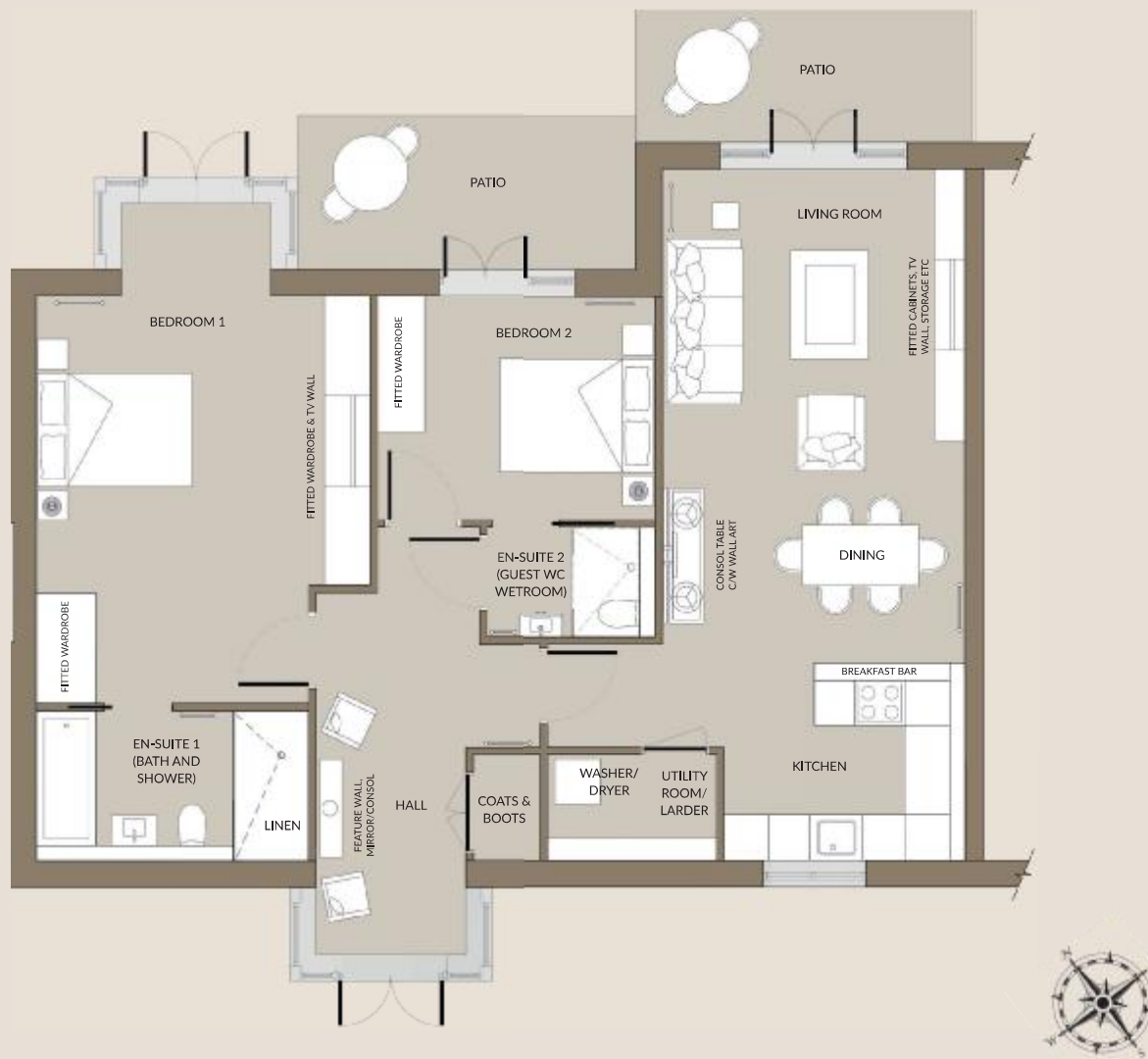


Apartment 1

Bourton Lodge



2 BEDROOM

GROUND FLOOR

GIA-101.9M² (1096.84FT²)

BEDROOM 1

4400 x 5400mm (14'5" x 17'7")

EN-SUITE 1

3600 x 2000mm (11'9" x 6'6")

BEDROOM 2

3700 x 2950mm (12'1" x 9'8")

EN-SUITE 2

2200 x 1450mm (7'2" x 4'9")

LIVING ROOM

4000 x 6700mm (13'1" x 21'11")

KITCHEN

3200 x 2475mm (10'6" x 8'1")

UTILITY ROOM

2250 x 1400mm (7'4" x 4'7")

PATIO

17M² (182.98FT²)

Please note that all floorplans and dimensions are taken from architectural drawings and are for guidance only - not to scale. Dimensions stated are within a tolerance of plus or minus 50mm. Overall dimensions are for reference only and should not be used for ordering carpets, furniture or similar. Please note that finishes, materials and measurements may alter slightly and are subject to change. Please ask your Sales Executive for specific details.

Telephone 01285 283 132

auracareliving.com