

Approximate Area = 778.9 sq m / 8384 sq ft (Excluding Void)

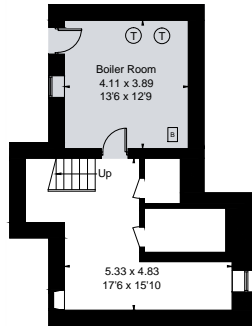
Basement = 43.2 sq m / 465 sq ft

Total = 822.1 sq m / 8849 sq ft

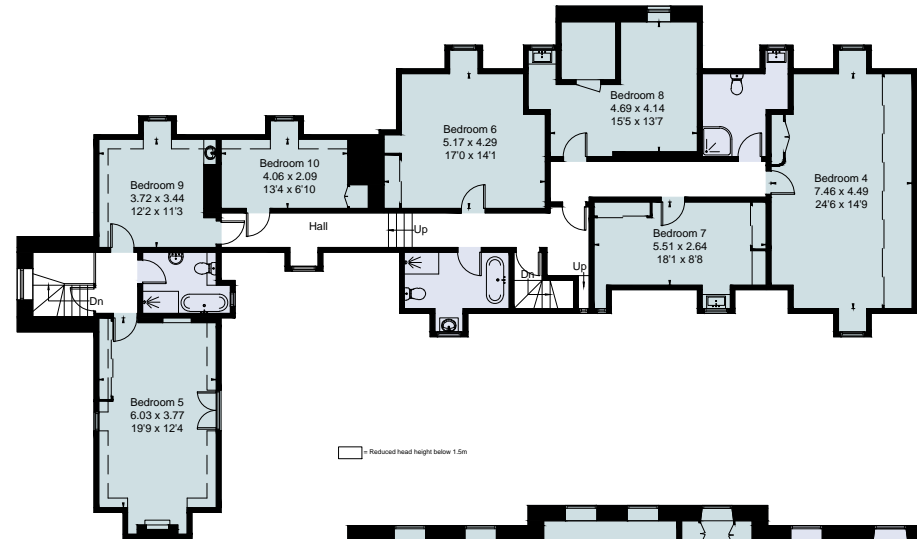
Including Limited Use Area (23 sq m / 248 sq ft)

For identification only. Not to scale.

© Fourwalls



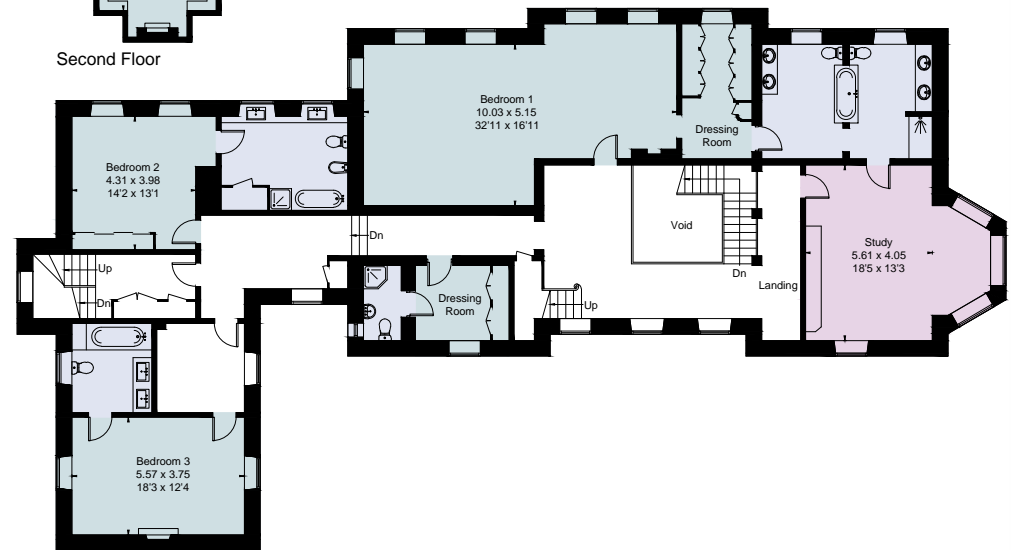
Basement



Second Floor



Ground Floor



First Floor