

East Wing, Coln Manor, Coin St. Aldwyncs, GL7 5AD

Gross Internal Area (approx) = 373.5 sq m / 4020 sq ft

(Excluding Void)

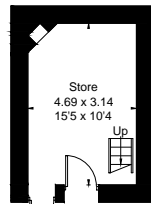
Basement / Cellar = 60.9 sq m / 655 sq ft

Outbuildings = 36.2 sq m / 390 sq ft

Total = 470.6 sq m / 5065 sq ft

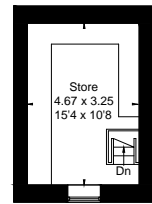
For identification only. Not to scale.

© Floorplanz Ltd

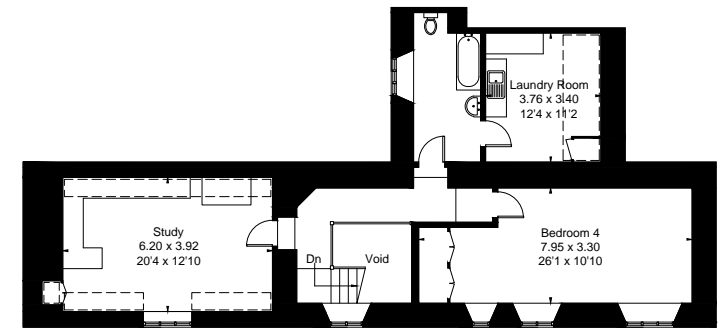
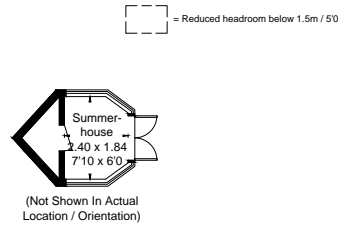


Outbuilding
Ground Floor

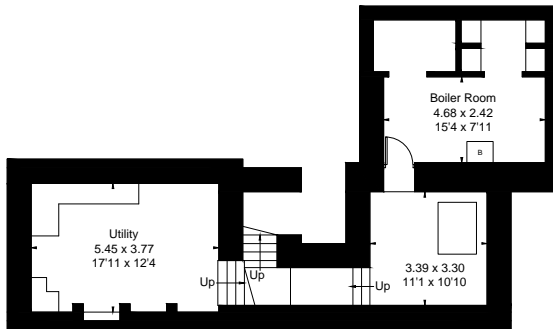
(Not Shown In Actual
Location / Orientation)



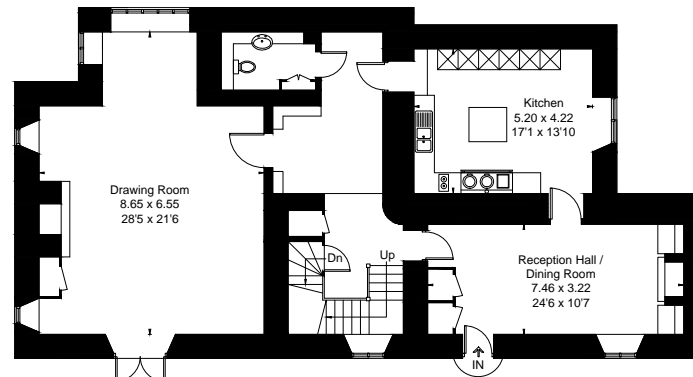
Outbuilding
First Floor



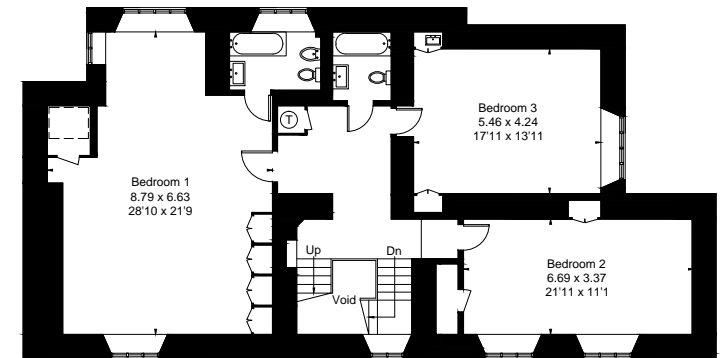
Second Floor



Basement



Ground Floor



First Floor