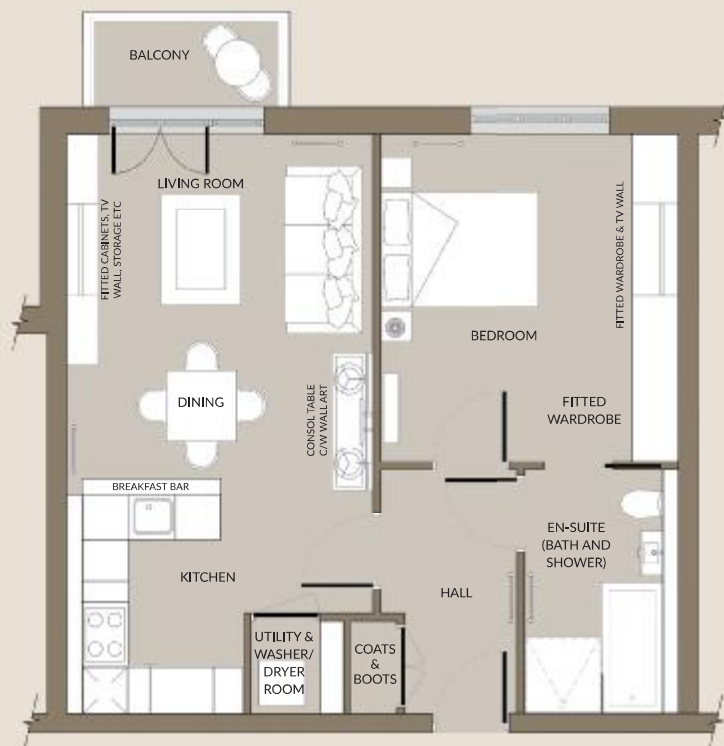


Apartment 10

Bourton Lodge



Please note that all floorplans and dimensions are taken from architectural drawings and are for guidance only - not to scale. Dimensions stated are within a tolerance of plus or minus 50mm. Overall dimensions are for reference only and should not be used for ordering carpets, furniture or similar. Please note that finishes, materials and measurements may alter slightly and are subject to change. Please ask your Sales Executive for specific details.

1 BEDROOM

FIRST FLOOR

GIA-58.5M² (629.68FT²)

BEDROOM

3850 x 4200mm (12'7" x 13'9")

EN-SUITE

2000 x 3100mm (6'6" x 10'2")

LIVING ROOM

4000 x 4600mm (13'1" x 15'1")

KITCHEN

3300 x 2950mm (10'10" x 9'8")

UTILITY ROOM

1200 x 1200mm (3'11" x 3'11")

BALCONY

1.7M² (18.29FT²)

Telephone 01285 283 132

auracareliving.com