



Full renovated Victorian residence with views

Hillside, The Tumble, St Nicholas, Cardiff, CF5 6SA

savills

Traditional Victorian bay fronted home • Including a one bedroom annexe • Detached coach house currently used as an office • Electric gates with parking for numerous vehicles • Set in mature grounds with fantastic views over Cardiff

Description

Hillside is set in an elevated position on the tumble, with panoramic views across Cardiff. Right on the A48, the transport links are fantastic and amenities are second to none with Culverhouse Cross on your doorstep. Electric gates open onto a sweeping driveway with parking for numerous vehicles.

The double bay fronted Victorian home is entered into a central hallway with original tiles and doors to the main reception rooms. There are three reception rooms to the main house, with a wood burning stove in two of them.

This generous family accommodation is complimented by a large bespoke fitted kitchen with granite worktops and integrated appliances, with space for an American style fridge/freezer. Off the kitchen is a utility room with space and plumbing for a washing machine and tumble dryer, as well as a downstairs wc. The kitchen is flooded with natural light thanks to three roof lights and there is a door onto the garden.

To the first floor is a generous landing with a balcony taking in the breath-taking views over Cardiff and the countryside. There are three bedrooms on this floor with the master boasting a large dressing room and fully fitted modern en suite

bathroom finished to a very high standard. Bedroom 2 also boasts an en suite bathroom, where bedroom 3 is serviced by a large family bathroom, again finished to a high standard.

Upstairs there is the possibility for an additional two large bedrooms. Adjoining the house, entered via sliding doors, there is a one bedroom annexe. Opening into the kitchen/ breakfast room with a modern fully fitted kitchen and ample space for dining. There is a separate large living room, generous double bedroom and its own bathroom, finished to an exceptional standard.

Outside

Outside, there is a coach house, now being used as an office with versatile accommodation with a conservatory/meeting room, open plan office space with kitchen and wc. To the first floor is an open space with roof lights and lots of space for storage.

Within the grounds, there is also a Summer house on the lower level, a gymnasium and a wooden built car port for two cars.

The gardens are mature and well planted, giving lots of privacy whilst taking in fantastic views over Cardiff and beyond.





Hillside, Cardif

Main House gross internal area = 3,396 sq ft / 315 sq m

Annexe gross internal area = 772 sq ft / 72 sq m

Outbuilding gross internal area = 760 sq ft / 71 sq m

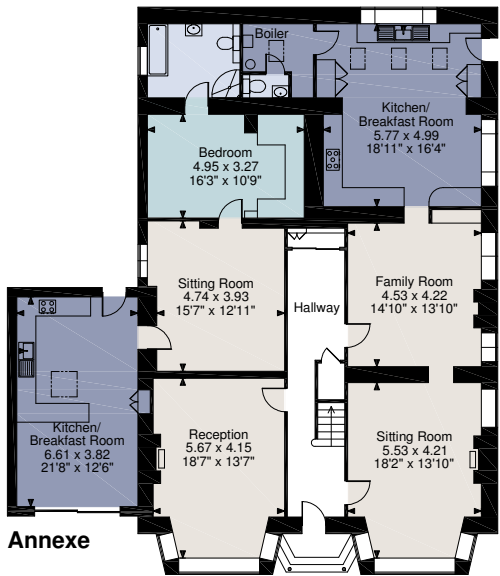
Balcony external area = 50 sq ft / 5 sq m



savills

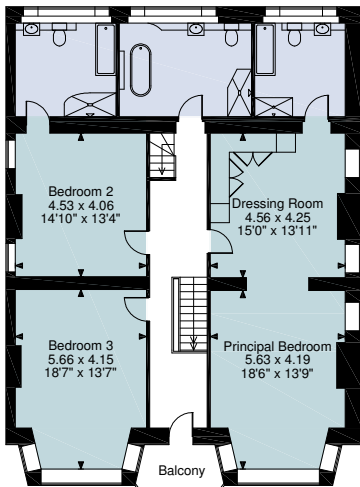
savills.co.uk

Savills Cardiff
02920 368930
cardiff@savills.com

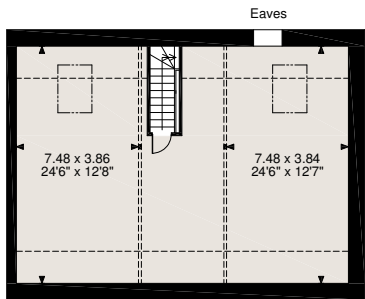


Annexe

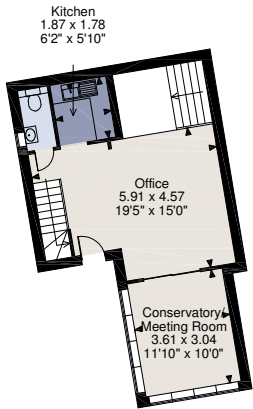
Ground Floor



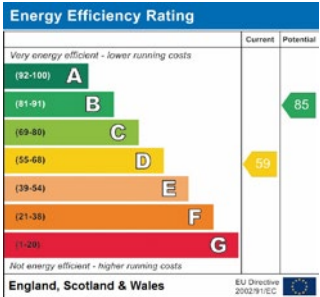
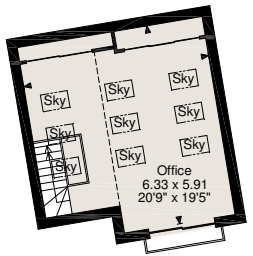
First Floor



Eaves



Outbuilding Ground Floor



For identification only. Not to scale. © 201012JT

Important notice Savills, its clients and any joint agents give notice that 1: They are not authorised to make or give any representations or warranties in relation to the property either here or elsewhere, either on their own behalf or on behalf of their client or otherwise. They assume no responsibility for any statement that may be made in these particulars. These particulars do not form part of any offer or contract and must not be relied upon as statements or representations of fact. 2: Any areas, measurements or distances are approximate. The text, photographs and plans are for guidance only and are not necessarily comprehensive. It should not be assumed that the property has all necessary planning, building regulation or other consents and Savills have not tested any services, equipment or facilities. Purchasers must satisfy themselves by inspection or otherwise.

