



Duplex, City Centre penthouse apartment

Brickworks, Trade Street, Cardiff, CF10 5EH

Unique development of industrial styled apartments
City Centre location • Gated car park with allocated space
Fantastic transport links with Cardiff • Central station within 200 metres • Duplex, penthouse apartment finished to a high specification

Brickworks is a development of apartments created by award-winning local developers, Portabella. The communal areas have an edgy look with lots of thought put into the detailing, providing a unique feel for Cardiff.

The apartment available is a duplex penthouse located on the 5th and 6th floors

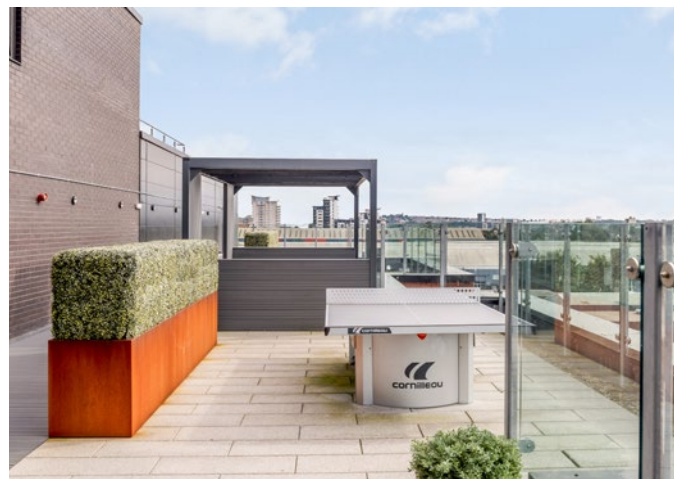
Through the front door, there is an entrance hall with a generous storage cupboard, airing cupboard with space and plumbing for a washing machine and stairs to the top floor.

The living area is open plan with the kitchen and boasts a Juliette balcony bringing in lots of natural light. The kitchen is comprehensively fitted with wall and base units including a peninsula. Integrated appliances include a fridge/freezer, oven and hob with extractor over.

Also on this level, there is a generous shower room and a versatile room that can be used as a study or 3rd bedroom.

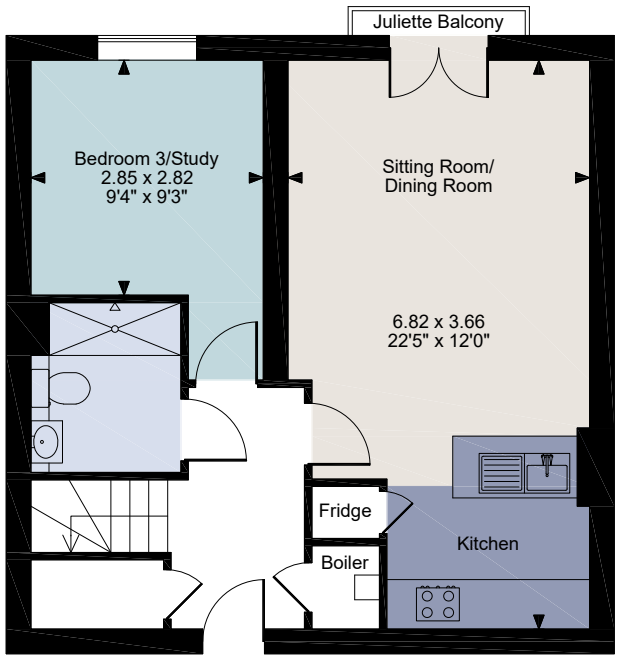
Upstairs, there are two bedrooms, both with large fitted wardrobes and double doors opening onto the generous balcony, fitted with artificial lawn and ideal for al fresco dining. These two bedrooms are serviced by another generous shower room with high-specification finishes.

Additional benefits include a communal roof terrace where there are fantastic views over the City and the opportunity to play table tennis. There is also secure, gated parking with one allocated space on the ground floor.

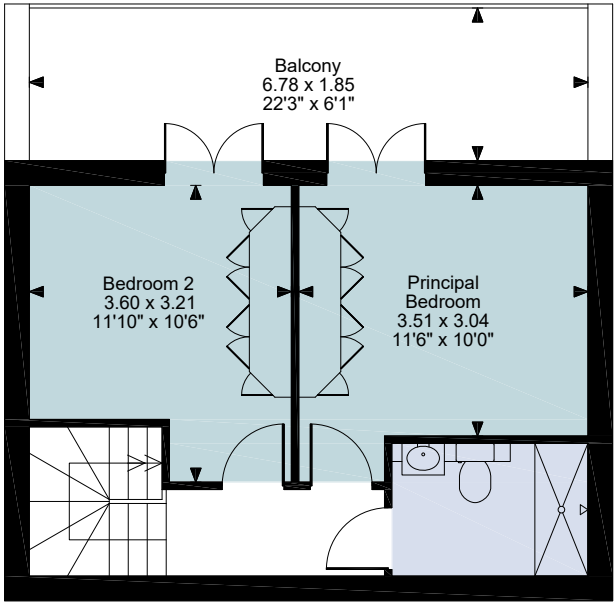




Brickworks, Trade Street
Main House gross internal area = 835 sq ft / 78 sq m
Balcony external area = 142 sq ft / 13 sq m



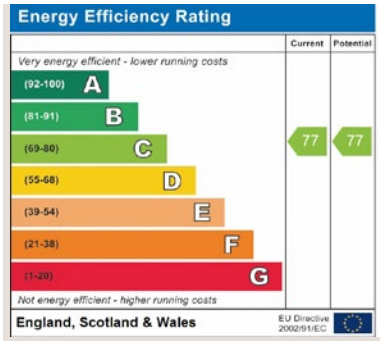
Fifth Floor



Sixth Floor

FOR ILLUSTRATIVE PURPOSES ONLY - NOT TO SCALE
The position & size of doors, windows, appliances and other features are approximate only.
© ehous. Unauthorised reproduction prohibited. Drawing ref. dig/8433763/KAT

For identification only. Not to scale. © 200904JT



Important notice Savills, its clients and any joint agents give notice that 1: They are not authorised to make or give any representations or warranties in relation to the property either here or elsewhere, either on their own behalf or on behalf of their client or otherwise. They assume no responsibility for any statement that may be made in these particulars. These particulars do not form part of any offer or contract and must not be relied upon as statements or representations of fact. 2: Any areas, measurements or distances are approximate. The text, photographs and plans are for guidance only and are not necessarily comprehensive. It should not be assumed that the property has all necessary planning, building regulation or other consents and Savills have not tested any services, equipment or facilities. Purchasers must satisfy themselves by inspection or otherwise.

