

SANT-Y-NYLL HOUSE



ST BRIDES SUPER ELY



SANT-Y-NYLL HOUSE

ST BRIDES SUPER ELY

AN IMPOSING, GRADE II LISTED COUNTRY
HOUSE OF CHARACTER IN LARGE,
SECLUDED GARDENS WITHIN AN EXCLUSIVE,
QUIET LOCATION



ACCOMMODATION:

6 BEDROOMS

3 RECEPTION ROOMS

LARGE ORANGERY

3 BATHROOMS

LARGE DINING KITCHEN

LARGE GARDENS EXTENDING TO APPROXIMATELY 12 ACRES

STABLE BLOCK

MÉNAGE

LONG, MEANDERING DRIVE

DELIGHTFUL VIEWS





SITUATION

Sant y Nyll is very well located, just on the leafy periphery of the hugely sought after, peaceful village of Peterston Super Ely. As a suburb of Cardiff, Peterston enjoys proximity to all the City's amenities yet has the ambience of a Vale village. Peterston itself has a village shop, a well regarded farm shop and two pubs including 'the Sportsman's Rest.' The market town of Cowbridge is 7 miles away providing comprehensive amenities whilst Cardiff City Centre is 8 miles.

DESCRIPTION

Sant y Nyll is an imposing, impressive Georgian style house of considerable character. Designed by the highly regarded architect Sir Percy Thomas in 1924, the house features grand period features throughout its spacious accommodation.

The property is approached via a long, gated driveway which elevates gently to the front of the property providing ample parking area.

Entered via an original, solid wood entrance door, an elegant reception hall features a turning staircase leading to the first floor and provides access to principle rooms.

There are three principal living rooms, all of which enjoy commanding views across the private 12 acres and surrounding countryside. These include the elegant dining hall with doors leading to the garden, the attractive sitting room with a feature gas fire and marble hearth, and the charming library with wood flooring and panelled sash windows.

An inner hallway provides access to a breakfast room which leads to the Orangery. With its vaulted glass roof and solid oak floor, this exquisite room is dominated by the commanding garden views.



The large kitchen and breakfast room featuring Sandstone flooring has been fitted with a range of units in solid wood and granite work surfaces incorporates two integral ovens, two induction hobs and plate heater, Neff coffee maker, wine cooler and double fridge.

Adjacent to the kitchen is a utility room, where the Sandstone flooring continues through here and there is a range of base and wall level units, space for an American style fridge/freezer and plumbing facilities.

Approached via a short single flight stair case, a basement level houses the boiler and a dry wine cellar and storage.



The ground floor is completed by a downstairs bathroom, incorporating a Heritage three piece bathroom suite comprising a roll top bath, vanity sink, walk-in shower and floor to ceiling ceramic tiles.

To the first floor, approached from a wide turning staircase, an impressive central landing provides access to five of the six bedrooms. The very large principal bedroom, which enjoys a southerly aspect over the gardens, features a very spacious dressing room (formerly a bedroom) and large en-suite facilities. The second bedroom is also of large proportions and enjoys a southerly aspect. Bedrooms two, three, four and five are all serviced by the large, contemporary family bathroom.

The second floor houses the sixth bedroom with velux windows, a walk-in wardrobe and storage across the eaves.

Outside, the property features a stable block comprising four large stables and tack storage.

Down from the stable block is a ménage.

The grounds at Sant y Nyll extend to approximately 12 acres and are a true delight, approached from a private automatic gated entrance, a meandering driveway leads through manicured and landscaped gardens to the imposing property entrance. Here, there is ample car parking space. The garden is very well stocked with mature trees and well tended ornamental beds. The grounds include pathways, terraces, a children's playground area, a large pond and plenty of space for al-fresco dining.

DIRECTIONS

Travelling along Croft-y-Genau Road away from the History Museum of St Fagans, turn left at the Cricket club onto St Brides Road. Travel for about 1 mile and then turn right onto Heol St Y Nyll and the entrance gates for Sant-y-Nyll House can be found straight ahead of you.

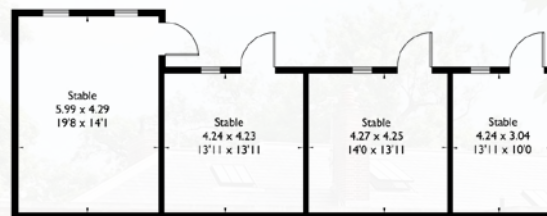


SANT-Y-NYLL HOUSE

St. Brides-super-Ely, Cardiff,
Vale of Glamorgan CF5 6EZ



Cellar



Stable Block

(Not Shown in Actual Location / Orientation)



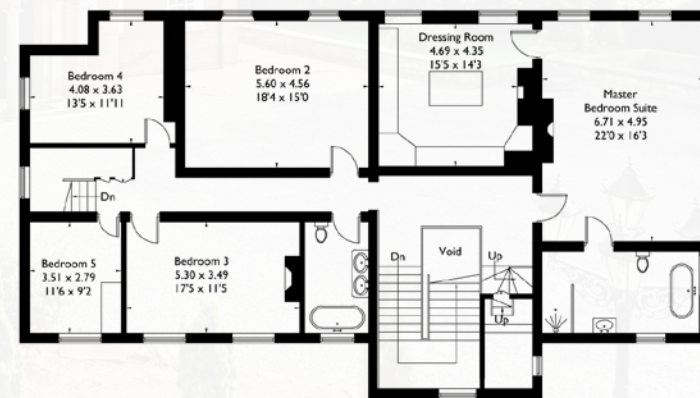
Orangery
8.34 x 8.34
27'4 x 27'4



Ground Floor



Second Floor



First Floor

FLOORPLANZ © 2016 0845 6344080 Ref: 167730

This plan is for layout guidance only. Drawn in accordance with RICS guidelines. Not drawn to scale unless stated. Windows & door openings are approximate. Whilst every care is taken in the preparation of this plan, please check all dimensions, shapes & compass bearings before making any decisions reliant upon them.



Savills Cardiff
12 Windsor Place
Cardiff, CF10 3BY
Tel 02920368930
Email cardiff@savills.com
www.savills.com

IMPORTANT NOTICE

Savills, their clients and any joint agents give notice that: 1. They are not authorised to make or give any representations or warranties in relation to the property either here or elsewhere, either on their own behalf or on behalf of their client or otherwise. They assume no responsibility for any statement that may be made in these particulars. These particulars do not form part of any offer or contract and must not be relied upon as statements or representations of fact. 2. Any areas, measurements or distances are approximate. The text, photographs and plans are for guidance only and are not necessarily comprehensive. It should not be assumed that the property has all necessary planning, building regulation or other consents and Savills have not tested any services, equipment or facilities. Purchasers must satisfy themselves by inspection or otherwise.

