



Magnificent high specification residence

Branksome Park, Poole BH13

Freehold - Guide Price £2,995,000



5 bedroom suites • Kitchen/breakfast/family room • 2 reception rooms • Study • Cinema room • Gym, Sauna and shower room • Indoor swimming pool • Sun terraces and Double garage

Local information

Branksome Chine beach 0.5 miles
 Westbourne shops 0.75 mile
 Canford Cliffs shops 0.8 mile
 Poole Harbour 1.2 miles
 Sandbanks 1.5 miles
 Bournemouth centre 2 miles
 Poole centre 3.5 miles
 London 110 miles (1 hour 50 minutes by train)

All times and distances are approximate

About this property

Sonata is a exceptional three-story detached home of contemporary design, that has been extended and enhanced by the current owner to an exceptionally high standard. The property is set in and acre of wooded garden within a quiet and peaceful location in Branksome Park.

The property offers luxurious living and extends to approximately 6,500 sq ft. The heart of the home is a feature kitchen/breakfast/family room opening on to indoor swimming pool complex and extensive sun terraces. The accommodation further includes a delightful drawing room opening onto the landscape garden, separate terrace/bar, study, cinema room, gymnasium, sauna and five en suite bedrooms.

Sonata combines a modern architectural style, with well designed accommodation and the benefit from a wonderful woodland setting providing a concord of indoor and outdoor living.

Specification -

- * Rational kitchen with curved central island, Granite worktops and a range of Gaggenau appliances
- * Indoor swimming pool complex with large vaulted skylight, audio system, high tech LED mood lighting
- * State of the art fully equipped bar, and custom-built study by 'Bespoke Furniture Company'
- * Beautifully appointed 25ft drawing room with feature fireplace
- * Cinema room with projection system and surround sound
- * Gymnasium with shower room and sauna
- * Zoned under floor gas fired central heating throughout
- * Programmable lighting and integrated audio system
- * Intruder Alarm system
- * Extensive landscaped south west facing rear garden with a herb garden to the rear

Tenure

Freehold

EPC rating = B

Viewing

Strictly by appointment with Savills



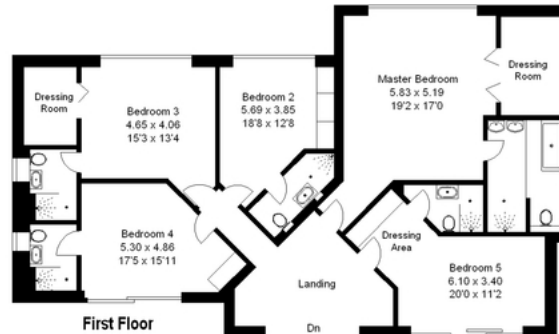


Sonata, 3 Western Road, Branksome Park
 Approximate Gross Internal Area -> 600 sq m / 6455 sq ft

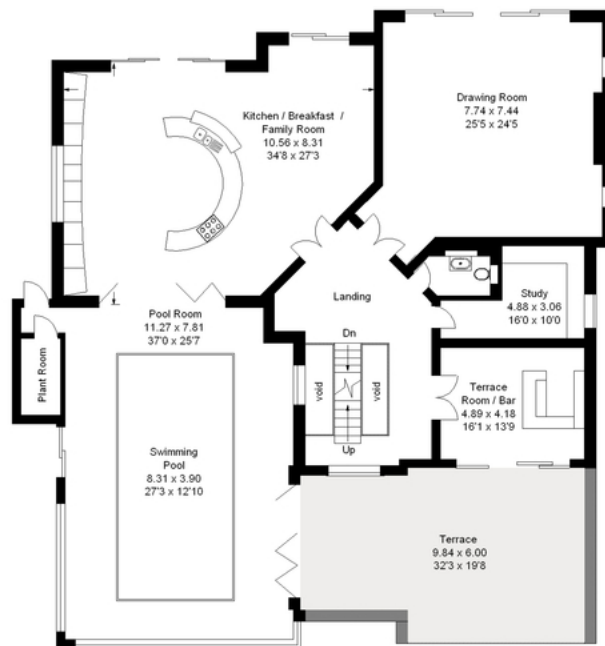


FLOOR PLANS SOUTHERN © 2015
 07710 270168 Ref: 15R231

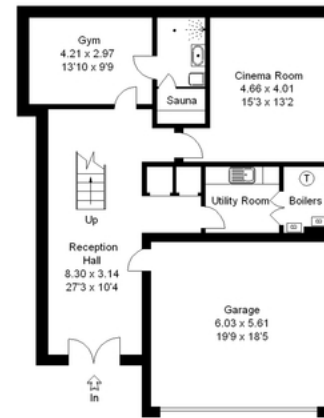
This illustration is for identification purposes only. Measured & drawn in accordance with RICS (RPA) guidelines. Not drawn to scale, unless stated. Elements shown are to the nearest 1/2 inch (12mm) and are through-typical or standard to wall surfaces unless possible or where indicated by arrow heads. UP/DN arrows are in black in the orientation of the plan, please check all dimensions against the contract drawings before making any decisions related to the plan.



First Floor



Ground Floor



Lower Ground Floor

Energy Efficiency Rating		
	Current	Potential
Very energy efficient - lower running costs		
(92-100) A		
(81-91) B	81	84
(69-80) C		
(55-68) D		
(39-54) E		
(21-38) F		
(1-20) G		
Not energy efficient - higher running costs		
England, Scotland & Wales	EU Directive 2002/91/EC	

Important notice: Savills, their clients and any joint agents give notice that 1: They are not authorised to make or give any representations or warranties in relation to the property either here or elsewhere, either on their own behalf or on behalf of their client or otherwise. They assume no responsibility for any statement that may be made in these particulars. These particulars do not form part of any offer or contract and must not be relied upon as statements or representations of fact. 2: Any areas, measurements or distances are approximate. The text, photographs and plans are for guidance only and are not necessarily comprehensive. It should not be assumed that the property has all necessary planning, building regulation or other consents and Savills have not tested any services, equipment or facilities. Purchasers must satisfy themselves by inspection or otherwise. 02026081 Job ID: 142773 User initials: PL