

Grade II listed barn for conversion

Black Barn, High Street Babraham, Cambridge CB22 3AR



Central village location • Traditional oak frame barn with weatherboarded elevations • Planning permission granted for two bed house

Local information

• Babraham is a small and pretty village with a primary school and pub. Sawston Village College provides secondary schooling. Independent schools for all age groups are available in Cambridge.

• The neighbouring village of Sawston is well-served and has a wide range of shopping facilities including a bank, Co-Op and a number of popular pubs/restaurants.

• There are mainline rail services from Whittlesford or Great Shelford into London Liverpool Street or alternatively from Cambridge into both London's Kings Cross and Liverpool Street stations.

About this property

Planning permission granted (Ref: S/1303/18/LB) for conversion of a barn and hovel to a two bed house with mezzanine study.

Local Authority

South Cambridgeshire DC

EPC rating = NA

Viewing

Strictly by appointment with Savills

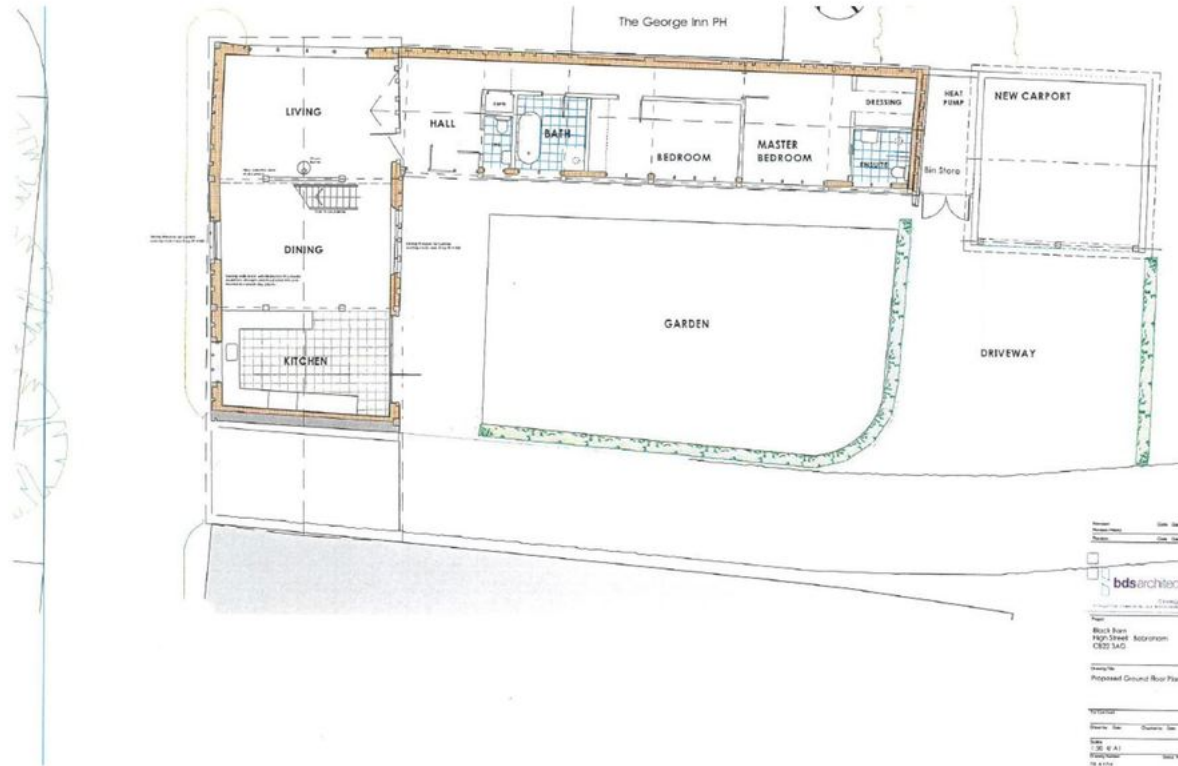
Black Barn, High Street Babraham, Cambridge CB22 3AR



savills

savills.co.uk

Savills Cambridge
01223 347147
lbanks@savills.com



Important notice: Savills, their clients and any joint agents give notice that 1: They are not authorised to make or give any representations or warranties in relation to the property either here or elsewhere, either on their own behalf or on behalf of their client or otherwise. They assume no responsibility for any statement that may be made in these particulars. These particulars do not form part of any offer or contract and must not be relied upon as statements or representations of fact. 2: Any areas, measurements or distances are approximate. The text, photographs and plans are for guidance only and are not necessarily comprehensive. It should not be assumed that the property has all necessary planning, building regulation or other consents and Savills have not tested any services, equipment or facilities. Purchasers must satisfy themselves by inspection or otherwise. 02027003 Job ID: 143884 User Initials: 200717VP

