



Second floor riverside apartment with parking

25 Riverside Place Cambridge CB5 8JF

Leasehold 125 years from 2004



Double bedroom with dressing area and built-in wardrobes • River views
• Allocated parking • No onward chain

Local information

• Comprehensive shopping facilities close by including Grafton Centre and Grand Arcade shopping malls.

About this property

25 Riverside Place extends to approximately 549 sq ft and looks directly over the scheme's garden on to the river Cam. The property is accessed via an intercom entry phone system and a lift and comprises an open plan kitchen/dining room and sitting room with windows to the front, a large double bedroom with dressing area and wall to wall wardrobes. The bathroom is fitted with white sanitary ware and has a shower over the bath. The property has an allocated parking space (number 25) to the front of the property along with scooter/cycle parking areas within the undercroft.

Ground rent: £275 pa; Service charge £2,169.81.

Tenure

Leasehold 125 years from 2004

EPC rating = C

Viewing

Strictly by appointment with Savills

25 Riverside Place Cambridge CB5 8JF

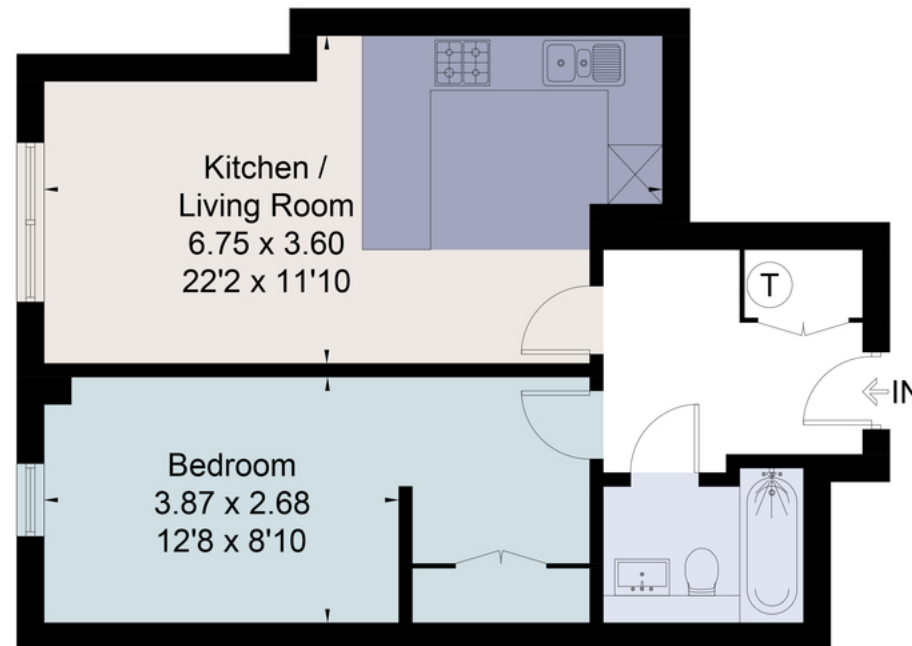


savills

savills.co.uk

Savills Cambridge
01223 347147
schipchase@savills.com

Approximate Area = 50.3 sq m / 541 sq ft
For identification only. Not to scale.
© Fourwalls Group



Surveyed and drawn in accordance with the International Property Measurement Standards (IPMS 2: Residential)
fourwalls-group.com 239679

Energy Efficiency Rating		
	Current	Potential
Very energy efficient - lower running costs		
(92-100) A		
(81-91) B		87
(69-80) C	76	
(55-68) D		
(39-54) E		
(21-38) F		
(1-20) G		
Not energy efficient - higher running costs		
England, Scotland & Wales	EU Directive 2002/91/EC	

Important notice: Savills, their clients and any joint agents give notice that 1: They are not authorised to make or give any representations or warranties in relation to the property either here or elsewhere, either on their own behalf or on behalf of their client or otherwise. They assume no responsibility for any statement that may be made in these particulars. These particulars do not form part of any offer or contract and must not be relied upon as statements or representations of fact. 2: Any areas, measurements or distances are approximate. The text, photographs and plans are for guidance only and are not necessarily comprehensive. It should not be assumed that the property has all necessary planning, building regulation or other consents and Savills have not tested any services, equipment or facilities. Purchasers must satisfy themselves by inspection or otherwise. 91029011 Job ID: 136477 User Initials: 190813 VP

