



Two bedroom duplex apartment

83 Flamsteed Close Cambridge CB1 3FE

Leasehold



Two bed duplex
apartment • Close to
train station • Allocated
parking • No onward
chain

About this property

83 Flamsteed Close is a 713 sq ft duplex apartment situated within this modern development near Cambridge train station. The front door leads through to an open plan kitchen and living space with wood floors. The kitchen is well equipped with a full height fridge/freezer, ceramic hob and stainless steel oven and has a cloakroom/utility room adjacent and granite worktops. The living area features sliding glazed doors which lead out to a balcony.

Upstairs, two double bedrooms both feature en suite shower rooms, with the master bedroom also benefitting from fitted wardrobes.

Ground rent: £350 pa; Service Charge: £1,506 pa.

Tenure

Leasehold

EPC rating = B

Viewing

Strictly by appointment with Savills

83 Flamsteed Close Cambridge CB1 3FE

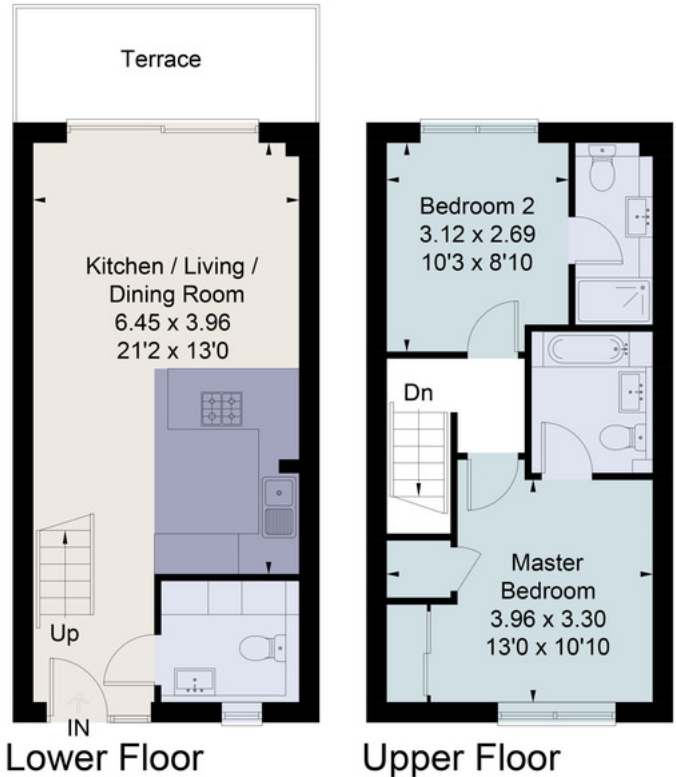


savills

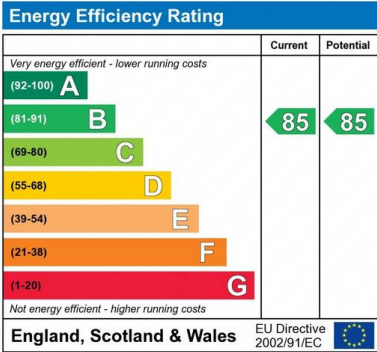
savills.co.uk

Savills Cambridge
01223 347147
schipchase@savills.com

Approximate Floor Area = 66.2 sq m / 713 sq ft



Drawn for illustration and identification purposes only by fourwalls-group.com 237234



Important notice: Savills, their clients and any joint agents give notice that 1: They are not authorised to make or give any representations or warranties in relation to the property either here or elsewhere, either on their own behalf or on behalf of their client or otherwise. They assume no responsibility for any statement that may be made in these particulars. These particulars do not form part of any offer or contract and must not be relied upon as statements or representations of fact. 2: Any areas, measurements or distances are approximate. The text, photographs and plans are for guidance only and are not necessarily comprehensive. It should not be assumed that the property has all necessary planning, building regulation or other consents and Savills have not tested any services, equipment or facilities. Purchasers must satisfy themselves by inspection or otherwise. 91028022 Job ID: 134633 User Initials: 190719 VP

