



A large family house on a hugely sought after street in Shepherds Bush

Warbeck Road, London, W12

Guide Price £1,700,000 Freehold



Local Information

Warbeck Road is a highly desirable street in Shepherd's Bush and is a hugely popular destination for families within the area especially with St Stephen's CE Primary School on the neighbouring street. The nearest Underground station is Shepherd's Bush Market (Circle and Hammersmith & City Lines) which offers an excellent service to the city, there are also a range of buses that provide services to central London.

Warbeck Road is also well located for access out of London to the west via the A4 and M4.

A range of local amenities are provided nearby including two brilliant gastro pubs and the close by Westfield complex offers a range of extensive shopping, restaurant and entertainment facilities too.

About this property

Bright and beautiful this large family house offers over 2600 square feet, offering five double bedrooms and vast amounts of living and reception space. The house has been completely refurbished by the existing owners and fully extended, it is presented in superb condition throughout offering neutral, contemporary tones whilst not forgetting its period heritage. The property comprises; five bedrooms, two bathrooms, utility room with an additional WC, a double reception room, a luxurious family kitchen and garden. Further benefits from a full height basement which is currently being used as an additional reception room,

Tenure

Freehold

Local Authority

Hammersmith & Fulham

Council Tax

Band = G

Energy Performance

EPC Rating = D

Viewing

All viewings will be accompanied and are strictly by prior arrangement through Savills Shepherds Bush & Brook Green Office.

Telephone: +44 (0) 203 618 3777.





Warbeck Road, London, W12
Gross Internal Area 2627 sq ft, 244.1 m²

Dominic Barry
Shepherds Bush & Brook Green
+44 (0) 203 618 3777
dominic.barry@savills.com



Warbeck Road, W12
Gross internal area (approx) 244.05 sq m / 2627 sq ft
(Including Eaves Storage)
Eaves Storage 5.58 sq m / 60 sq ft

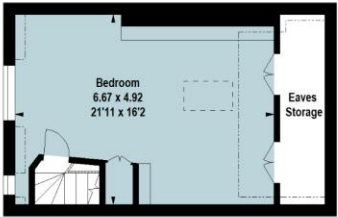
Key :
CH - Ceiling Height



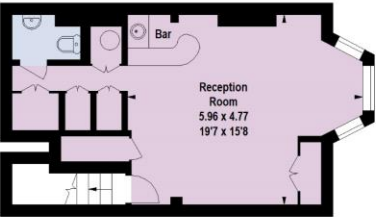
First Floor



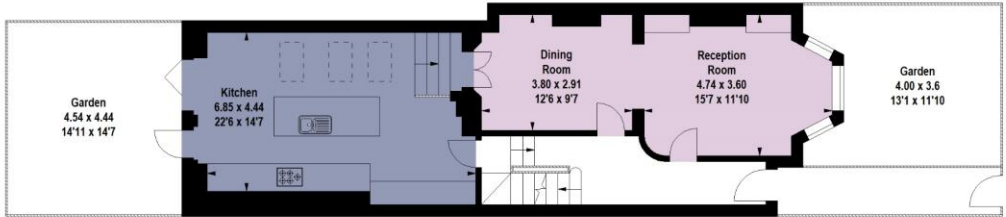
Second Floor



Third Floor

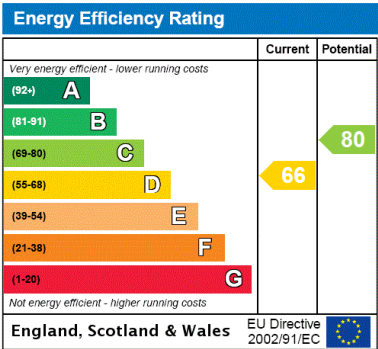


Lower Ground Floor



Ground Floor

For Identification Only. Not To Scale.
© Click London Limited



Important Notice Savills, its clients and any joint agents give notice that 1: They are not authorised to make or give any representations or warranties in relation to the property either here or elsewhere, either on their own behalf or on behalf of their client or otherwise. They assume no responsibility for any statement that may be made in these particulars. These particulars do not form part of any offer or contract and must not be relied upon as statements or representations of fact. 2: Any areas, measurements or distances are approximate. The text, photographs and plans are for guidance only and are not necessarily comprehensive. It should not be assumed that the property has all necessary planning, building regulation or other consents and Savills have not tested any services, equipment or facilities. Purchasers must satisfy themselves by inspection or otherwise. 20221017FYCH

