



A marvellous apartment within the Television Centre overlooking the iconic Helios statue.

Television Centre, 101 Wood Lane, London, W12

Leasehold





Situated within the iconic Television Centre • Approximately 0.2 mile from Wood Lane Underground Station • Split level apartment • Views over the historic Helios statue • One bedroom

#### Local Information

Located in the heart of White City. The former BBC Television Centre sits on Wood lane, next to Westfield West London. With White City Station (approximately 0.1 mile, Central line), Wood Lane (approximately 0.1 mile, Hammersmith & City and Circle lines) and Shepherds Bush (approximately 0.6 miles, Central line and Overground lines) stations on your doorstep.

Television Centre is served by excellent Underground, Overground, bus and road routes into the West End, the City and Canary Wharf. This historic forecourt offers many restaurants, cinema, television studios, health club, spa and Soho House.

Ideally located with access to the glorious open space of Hammersmith Park boasting a Japanese Garden, a gated children's play area, bowling green, tennis courts and five-a-side football pitches.

#### About this property

A brilliant split level apartment within the iconic Television Centre overlooking the historic Helios statue.

This apartment is split over the first and second floor of the Television Center featuring high ceilings and fantastic wide windows allowing for an abundance of natural light to enter the apartment. The wide entrance presents excellent storage facilities and leads to the principal bedroom offering a

bespoke walk-in wardrobe and adjacent bathroom featuring a walk-in shower.

The modern, open-plan kitchen can be found on the upper level offering modern appliances, a peninsula and bespoke built-in storage. The kitchen further benefits from Terrazzo stone worktops and an Italian Dada designed kitchen. The reception area presents brilliant entertaining space for family and guests along with wonderful views over the Helios statue and fountain

This fabulous apartment offers access to the excellently equipped SoHo house gym, swimming pool, cinema and also benefits from a twenty-four hour concierge service.

#### Tenure

Leasehold (994 years remaining)

#### Ground rent

Approximately £450 per annum

#### Service Charge

Approximately £4,718 per annum

#### Local Authority

Hammersmith and Fulham London Borough Council, Town Hall

#### Energy Performance

EPC Rating = B

#### Viewing

All viewings will be accompanied and are strictly by prior arrangement through Savills Shepherds Bush & Brook Green Office.

Telephone: +44 (0) 203 618







Television Centre, 101 Wood Lane, London, W12  
Gross Internal Area 579 sq ft, 53.8 m<sup>2</sup>

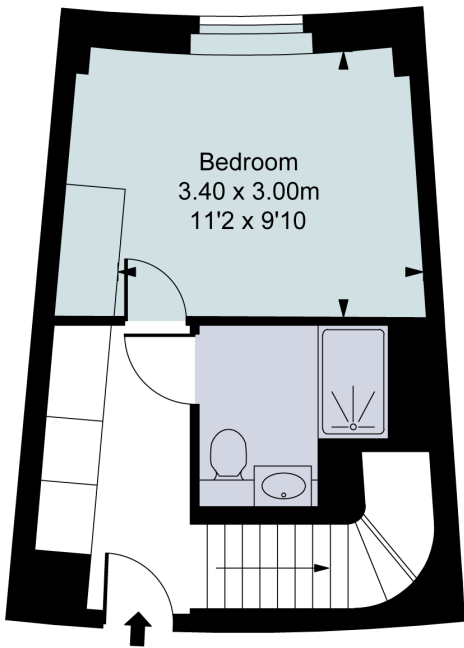


savills

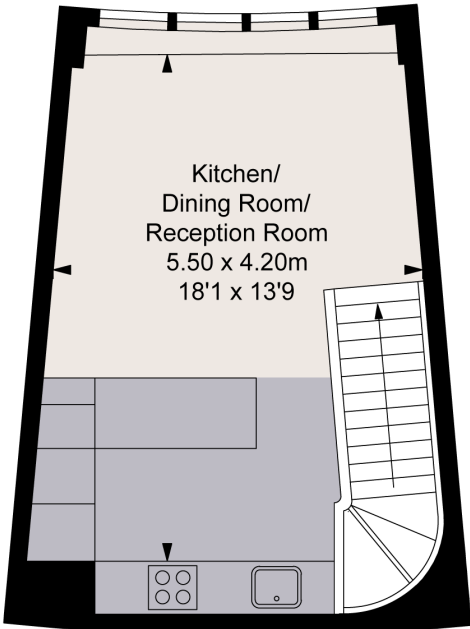
savills.co.uk

**Nick Udovicic**  
Shepherds Bush & Brook Green  
**+44 (0) 203 618 3777**  
nick.udovicic@savills.com

Television Centre,  
Wood Lane, W12  
Approximate Gross Internal Area  
53.80 sq m / 579 sq ft



First Floor  
Approximate Gross Internal Area  
27.10 sq m / 292 sq ft



Second Floor  
Approximate Gross Internal Area  
26.70 sq m / 287 sq ft

ILLUSTRATION FOR IDENTIFICATION PURPOSES ONLY  
ALL MEASUREMENTS AND AREA FIGURES SUPPLIED BY OTHERS, ACCURACY IS NOT GUARANTEED.  
THIS PLAN MUST NOT BE REPRODUCED BY ANY OTHER PERSON WITHOUT PERMISSION

Energy Efficiency Rating		
	Current	Potential
Very energy efficient - lower running costs		
(92+) <b>A</b>		
(81-91) <b>B</b>	85	85
(69-80) <b>C</b>		
(55-68) <b>D</b>		
(39-54) <b>E</b>		
(21-38) <b>F</b>		
(1-20) <b>G</b>		
Not energy efficient - higher running costs		
England, Scotland & Wales	EU Directive 2002/91/EC	

**Important Notice** Savills, its clients and any joint agents give notice that 1: They are not authorised to make or give any representations or warranties in relation to the property either here or elsewhere, either on their own behalf or on behalf of their client or otherwise. They assume no responsibility for any statement that may be made in these particulars. These particulars do not form part of any offer or contract and must not be relied upon as statements or representations of fact. 2: Any areas, measurements or distances are approximate. The text, photographs and plans are for guidance only and are not necessarily comprehensive. It should not be assumed that the property has all necessary planning, building regulation or other consents and Savills have not tested any services, equipment or facilities. Purchasers must satisfy themselves by inspection or otherwise. 20200724LCSK

