



A striking apartment within the iconic Television Centre.

Television Centre, 101 Wood Lane, London, W12

Leasehold

savills



Situated in the iconic Television Centre • Approximately 0.3 miles from Wood Lane Underground Station • Open-plan living area • Located on the fifth floor of this prestigious development • Close proximity to Hammersmith Park

#### Local Information

Located in the heart of White City. The former BBC Television Centre sits on Wood Lane, next to Westfield West London. With White City (290 yards), Wood Lane (90 yards) and Shepherds Bush (0.6 miles) stations on your doorstep, Television Centre is served by excellent Underground, Overground, bus and road routes into the West End, the City and Canary Wharf.

The historic forecourt offers many restaurants, cinema, television studios, health club, spa and a Soho House. Ideally located with access to the glorious open space of Hammersmith Park boasting a Japanese Garden, a gated children's play area, bowling green, tennis courts and five-a-side football pitches.

#### About this property

A remarkable apartment located on the fifth floor of the historic BBC Television Centre. This striking apartment comprises of an open-plan kitchen/reception area, two beautifully finished double bedrooms, and two bathrooms (one ensuite).

Upon entrance to this wonderful apartment an open-plan reception area and fitted kitchen can be found, offering unrivalled entertaining space for family and friends. The kitchen benefits from built-in appliances, an island and an abundance of storage.

The master suite leads off from the reception and offers a bespoke built-in wardrobe and a spacious ensuite bathroom with a walk-in shower. The second double bedroom sits on the opposite side of the reception next to the modern family bathroom, and has the advantage of large windows letting in an array of natural light.

#### Tenure

Leasehold, 972 years remaining

#### Ground Rent

Approximately £600 per annum

#### Service Charge

Approximately £7,071.15 per annum

#### Local Authority

Hammersmith and Fulham London Borough Council, Town Hall

#### Energy Performance

EPC Rating = B

#### Viewing

All viewings will be accompanied and are strictly by prior arrangement through Savills Shepherds Bush & Brook Green Office.

Telephone: +44 (0) 203 618 3777.



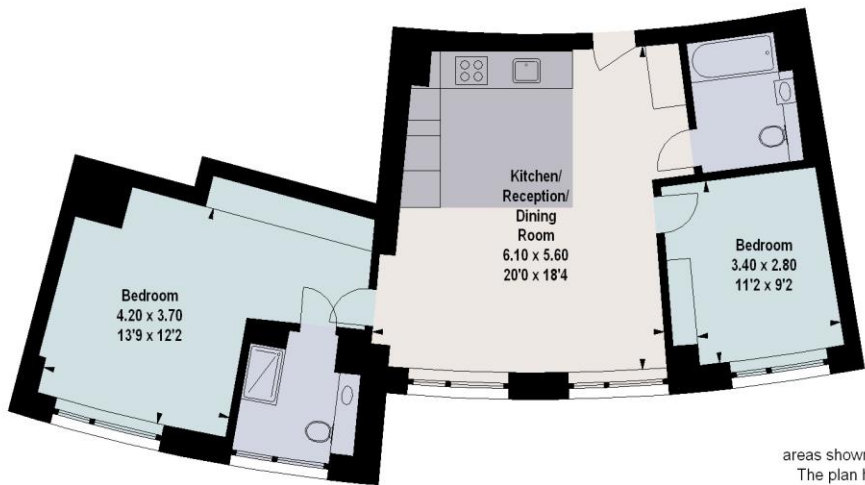




Television Centre, 101 Wood Lane, London, W12  
Gross Internal Area 861 sq ft, 79.99 m<sup>2</sup>

Nick Udovicic  
Shepherds Bush & Brook Green  
+44 (0) 203 618 3777  
nick.udovicic@savills.com

 |  savills | savills.co.uk

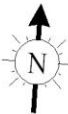


Fifth Floor


Television Centre, W12

Approximate gross internal area

79.99 sq m / 861 sq ft



The floor plan is not to scale and measurements and areas shown are approximate and therefore should be used for illustrative purposes only. The plan has been prepared in accordance with the RICS code of Measuring Practice and whilst we have confidence in the information produced, it must not be relied on. If there is any aspect of particular importance, you should carry out or commission your own inspection of the property.  
Copyright of FeaturePRO.

Energy Efficiency Rating		
	Current	Potential
Very energy efficient - lower running costs		
(92+) A		
(81-91) B	86	85
(69-80) C		
(55-68) D		
(39-54) E		
(21-38) F		
(1-20) G		
Not energy efficient - higher running costs		
England, Scotland & Wales	EU Directive 2002/91/EC 	

**Important notice** Savills, its clients and any joint agents give notice that 1: They are not authorised to make or give any representations or warranties in relation to the property either here or elsewhere, either on their own behalf or on behalf of their client or otherwise. They assume no responsibility for any statement that may be made in these particulars. These particulars do not form part of any offer or contract and must not be relied upon as statements or representations of fact. 2: Any areas, measurements or distances are approximate. The text, photographs and plans are for guidance only and are not necessarily comprehensive. It should not be assumed that the property has all necessary planning, building regulation or other consents and Savills have not tested any services, equipment or facilities. Purchasers must satisfy themselves by inspection or otherwise. 20191203LCSK

