



A lovely 2 bedroom flat in the Television Centre

Wood Crescent, Television Centre, White City, London, W12

£725 pw (£3,141.67 pcm) plus fees apply, Unfurnished
Available Now



Open plan kitchen/reception room with access to a balcony
• Master bedroom with walk-in wardrobe and en suite bathroom
• Additional, separate 2nd bathroom • Facilities with the development include concierge, gym and spa • Fourth floor

Local Information

Television Centre is situated in West London on the edge of Shepherd's Bush next to Westfield Shopping centre amongst the overall 145 acre regeneration of White City.

Television Centre has easy access to London's vast established transport network. In addition to White City and Wood Lane underground stations, the area is served by excellent overground, bus and road routes into the West End, the City, Canary Wharf and beyond.

About this property

A brand new to the market 2 bedroom apartment on the fourth floor of Wood Crescent which is part of the Television Centre development in White City.

The apartment offers a spacious reception/kitchen area with luxury built in appliances, a brilliant amount of light and large glass bi-folding doors opening up onto a balcony.

The master bedroom has its own en suite bathroom with a shower and a walk-in wardrobe. The second bedroom has in-built storage and is served by a large bathroom with a bath.

Facilities with the development include concierge, gym and spa.

Residents workspace and cinema room.

Furnishing

Unfurnished

Local Authority

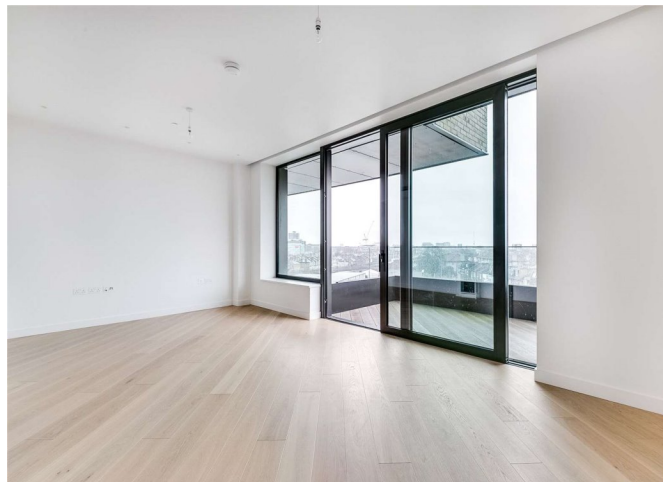
London Borough of Hammersmith and Fulham Council

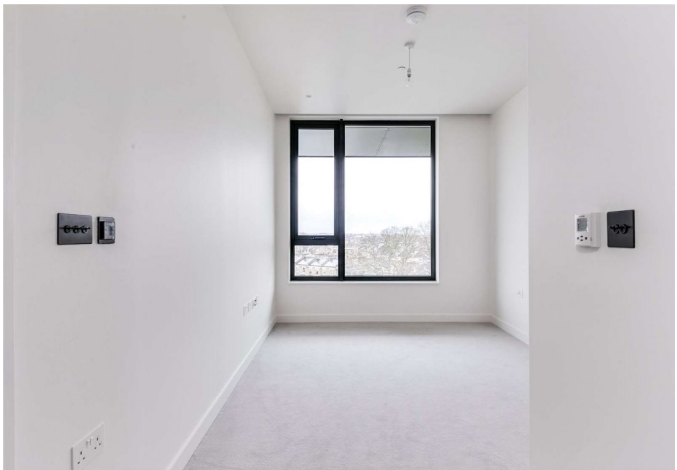
Energy Performance

EPC Rating = B

Viewing

All viewings will be accompanied and are strictly by prior arrangement through Savills Brook Green & Shepherds Bush Office. Telephone: +44 (0) 203 618 3777.





Wood Crescent, Television Centre, White City, London, W12
Gross Internal Area 882 sq ft, 81.94 m²

Natasha Wilkinson
Brook Green & Shepherds Bush
+44 (0) 203 618 3777
natasha.wilkinson@savills.com

 |  savills | savills.co.uk




Wood Crescent, W12

Approximate gross internal area
81.94 sq m / 882 sq ft



The floor plan is not to scale and measurements and areas shown are approximate and therefore should be used for illustrative purposes only. The plan has been prepared in accordance with the RICS code of Measuring Practice and whilst we have confidence in the information produced, it must not be relied on. If there is any aspect of particular importance, you should carry out or commission your own inspection of the property.
Copyright of FeaturePRO.

Energy Efficiency Rating		
	Current	Potential
Very energy efficient - lower running costs		
(92+) A		
(81-91) B	87	87
(69-80) C		
(55-68) D		
(39-54) E		
(21-38) F		
(1-20) G		
Not energy efficient - higher running costs		
England, Scotland & Wales EU Directive 2002/91/EC 		

Important notice Savills, their clients and any joint agents give notice that: 1. They are not authorised to make or give any representations or warranties in relation to the property either here or elsewhere, either on their own behalf or on behalf of their client or otherwise. They assume no responsibility for any statement that may be made in these particulars. These particulars do not form part of any offer or contract and must not be relied upon as statements or representations of fact. 2. Any areas, measurements or distances are approximate. The text, images and plans are for guidance only and are not necessarily comprehensive. It should not be assumed that the property has all necessary planning, building regulation or other consents and Savills have not tested any services, equipment or facilities. Prospective tenants must satisfy themselves by inspection or otherwise. Please note that the local area may be affected by aircraft noise, you should make your own enquiries regarding any noise within the area before you make any offer.

*There are different rules and fees for different tenancy types. For details of our fees and charges to go to Savills.co.uk/tenant-fees. For more detailed information read our applicant guide at savills.co.uk/applicant-guide. Hard copy available on request. . 20191212KOCA

