



An elegant three bedroom flat in Queen's Club Gardens.

Purcell Mansions, Queen's Club Gardens, Barons Court, Fulham, W14

£1,000,000 Share of Freehold

savills

- 3 bedrooms
 - reception room/dining room
 - 2 bathroom
 - 125.02 sq m (1,346 sq ft)
 - communal gardens and tennis courts
-

Description

An elegant three bedroom flat in Queen's Club Gardens. This stunning flat boasts high ceilings throughout and has access on to the communal gardens and tennis courts.

The eat-in kitchen has integrated modern appliances and the reception/dining room is spacious and wonderfully light, ideal for entertaining.

The flat comprises three double bedrooms. The master bedroom benefits from an en suite shower room and luxurious walk in wardrobe. There is a further modern bathroom..

Location

Queens Club Gardens is an impressive group of Mansion Blocks surrounding a mature, central communal garden.

It is located moments from the famous Queen's Tennis Club and is well positioned for the transport links at West Kensington approximately 0.5 miles away and Barons Court Underground stations approximately 0.6 miles, offering District and Piccadilly Line services.

Tenure

Share of Freehold

Energy Performance

EPC Rating = D

Viewing

All viewings will be accompanied and are strictly by prior arrangement through Savills Bishops Park Office.
Telephone: +44 (0) 207 578 9050.





Purcell Mansions, Queen's Club Gardens, Barons Court, Fulham, W14
Gross Internal Area 1346 sq ft, 125.02 m²

George Smith
Bishops Park
+44 (0) 207 578 9050
gwsmith@savills.com

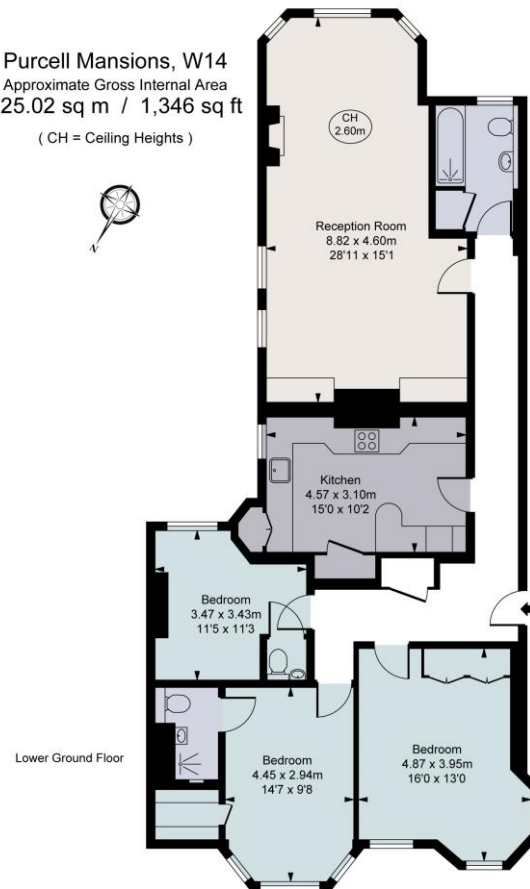
 OnTheMarket.com



savills

savills.co.uk

Purcell Mansions, W14
Approximate Gross Internal Area
125.02 sq m / 1,346 sq ft
(CH = Ceiling Heights)



This plan is not to scale. It is for guidance and not for valuation purposes.
All measurements and areas are approximate only, and have been prepared in accordance with the current edition of the RICS Code of Measuring Practice.
© Fulham Performance

Important notice Savills, its clients and any joint agents give notice that 1: They are not authorised to make or give any representations or warranties in relation to the property either here or elsewhere, either on their own behalf or on behalf of their client or otherwise. They assume no responsibility for any statement that may be made in these particulars. These particulars do not form part of any offer or contract and must not be relied upon as statements or representations of fact. 2: Any areas, measurements or distances are approximate. The text, photographs and plans are for guidance only and are not necessarily comprehensive. It should not be assumed that the property has all necessary planning, building regulation or other consents and Savills have not tested any services, equipment or facilities. Purchasers must satisfy themselves by inspection or otherwise. 20200117RRDD

